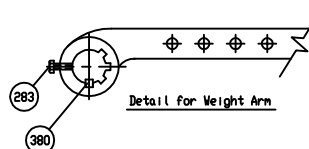
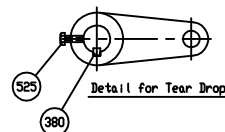
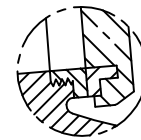
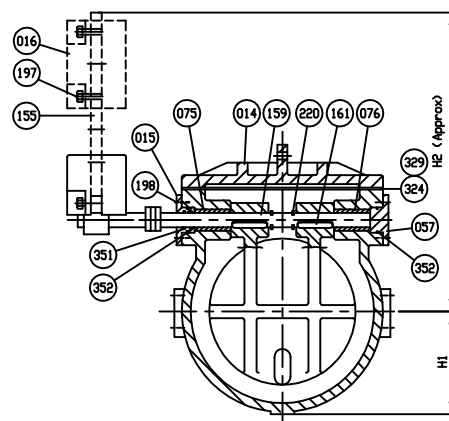
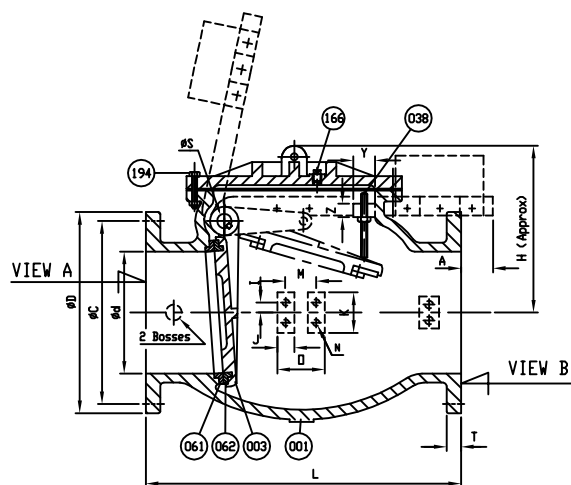


Marking

SIZE (INCH)   
 CCNE SCI  
 150 CWP YEAR  
 AWWA C508 POURING DATE  
 SERIES 9000



525	Tear Drop Bolt	Zinc Coated Steel	A 307 Grade B	1
409	Tear Drop	Ductile Iron	A 536 Gr. 65-45-12	1
380	Key B	Stainless Steel	A 276 Type 304	2
352	O-Ring C	Rubber (Buna N)	D 2000 BK 707	2
351	O-Ring B	Rubber (Buna N)	D 2000 BK 707	2
329	Cover O-Ring	Rubber (Buna N)	D 2000 BK 807	1
324	Cover Gasket	Rubber (Buna N)	D 2000 BK 807	1
283	Arm Bolt	Zinc Coated Steel	A 307 Grade B	1
220	Snap Ring	Stainless Steel	A 276 Type 420	2
198	End Plate Bolt	Zinc Coated Steel	A 307 Grade B	1 <sup>SEE</sup>
197	Weight Bolt	Zinc Coated Steel	A 307 Grade B	2
194	Cover Bolt & Nut	Zinc Coated Steel	A 307 Grade B	1 <sup>SEE</sup>
166	Plug #1'	Stainless Steel	A 276 Type 304	1
161	Key A	Stainless Steel	A 276 Type 304	2
159	Hinge Pin	Stainless Steel	A 276 Type 304	1
155	Weight Arm	Ductile Iron	A 536 Gr. 65-45-12	1
076	Bushing (B)	Bronze	B 62	1
075	Bushing (A)	Bronze	B 62	1
062	Disc Seat Ring	Bronze	B 62	1
061	Body Seat Ring	Bronze	B 62	1
057	End Plate (B)	Ductile Iron	A 536 Gr. 65-45-12	1
038	Stopper	Stainless Steel	A 276 Type 304	1
016	Weight	Cast Iron	A 126 Class B	1
015	End Plate (A)	Bronze	B 62	1
014	Cover	Cast Iron	A 126 Class B	1
003	Disc	Ductile Iron	A 536 Gr. 65-45-12	1
001	Body	Cast Iron	A 126 Class B	1

MATERIAL LIST			
ND.	PARTS	MATERIAL	ASTM DESIGNATION
HYDRD SHELL 300 PSI.			
HYDRD VALVE SEAT 150 PSI.			
HYDRD BACK SEAT - PSI.			
AIR SEAT - PSI.			
STEAM - PSI.			
TEST PRESSURE			
WORKING PRESSURE		150 PSI.	

SIZE Ød in. mm.	L	ANSI B16.1 CL. 125					A	ØS	ØB	H	H1	H2	I	J	K	M	N	N1	n1	n2	n3	n4	Ø	P	L1	X	Y	Z
		ØD	ØC	Øh	n	T																						
14 (350)	30	21	18 3/4	1 1/8	12	1 3/8	6.5	3	22.24	21 1/16	12 1/16	43 7/8	1	2 1/8	4 1/2	4	3/4x10v(UNC)	-	-	-	-	-	6	1 1/2	23 1/2	9.5	2.5	1 1/2
16 (400)	30 1/2	23 1/2	21 1/4	1 1/8	16	1 1/16	8.75	3 1/2	24 1/8	24	13 5/16	50 1/4	1	2 1/8	4 1/2	4	3/4x10v(UNC)	1x8v(UNC)	12	4	8	8	6	1 1/2	26 7/8	10.75	2.5	1 1/2
18 (450)	33 1/2	25	22 3/4	1 1/4	16	1 9/16	8.25	3 3/4	28.35	27 9/16	14 5/8	55 3/4	1	2 1/8	4 1/2	4	3/4x10v(UNC)	1 1/8x7v(UNC)	-	16	-	-	6	1 1/2	28 3/4	11.25	3	1 3/4
20 (500)	40	27 1/2	25	1 1/4	20	1 1/16	8	4	31	31 5/16	15 3/8	62 1/8	1.5	2 1/2	5	4 1/2	1x8v(UNC)	-	-	-	-	-	7	2	32 1/2	11.5	3.5	2
24 (600)	46	32	29 1/2	1 3/8	20	1 7/8	7	4	35.85	35 1/4	17 3/8	69 5/8	1.5	2 1/2	5	4 1/2	1x8v(UNC)	-	-	-	-	-	7	2	34 3/8	11.5	3.5	2

SCALE			
N.T.S.	DR. JON COLPAN	DATE 02/06/14	REF. DWG. USA1350C
TITLE			
SIZE 14" to 24" SWING CHECK VALVE AWWA C508 BRONZE BODY SEAT RING & BRONZE DISC SEAT RING WITH ONE LEVER AND WEIGHT			
TYPE: 9001ABBLW			
DWG NO. HP90122		REV. 3	

REVISION 1, REMOVED ITEMS 024 AND 188 FROM THE MATERIAL LIST (BRONZE/BRONZE SEAT MADE WITH PRESS FIT PROCESS), JC, 01/21/16  
 REVISION 2, ADDED COVER O-RING TO MATERIAL TABLE AND REMOVED PAINT NOTE, AA, 11/28/17  
 REVISION 3, UPDATE VIEW B FOR 16" SIZE AND ADDED COLUMNS n3 & n4, JCL, 02/02/18

DS01 ISSUED : 240640 REVISED:- USA1350A->CHANGE F-F,THREAD UNC