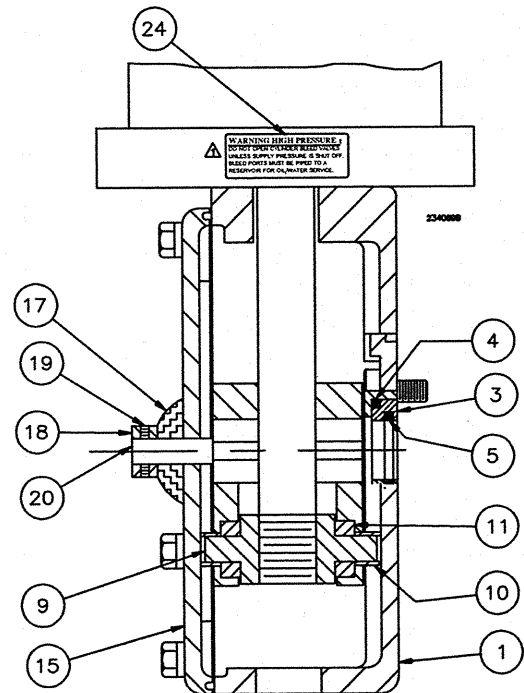
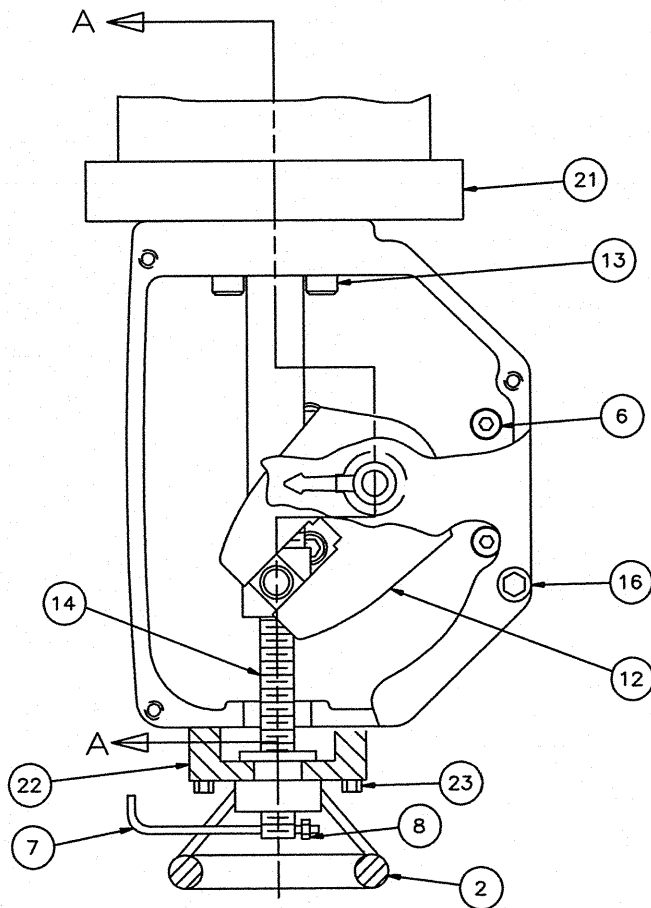


ITEM	DESCRIPTION	DESCRIPTION
1	HOUSING	CAST IRON ASTM A126 CLASS B
2	HANDWHEEL	CAST IRON ASTM A126 CLASS B
3	INSERT	NORYL GRADE GFN3-780
4	O-RING	BUNA-N
5	O-RING	BUNA-N
6	CAPSCREW	ALLOY STEEL
7	PIN	COLD DRAWN STEEL
8	NUT	CARBON STEEL
9	SLIDER NUT	DUCTILE IRON ASTM A-536 GRADE 80-55-06
10	SLIDER TUBE	STEEL COLD DRAWN TUBING
11	SLIDER BLOCK	SINTERED IRON ASTM B-439 GRADE 3

ITEM	DESCRIPTION	DESCRIPTION
12	LEVER	DUCTILE IRON ASTM A536 (65-45-12)
13	CAPSCREW	CARBON STEEL SAE GR. 2
14	SCREW ROD	COLD DRAWN STEEL
15	COVER	CAST IRON ASTM A-126 CLASS B
16	CAPSCREW	STAINLESS STEEL TYPE 304
17	GROMMET	NEOPRENE
18	INDCTR. ARROW	DIE CAST CHROME PLATED
19	SET SCREW	ALLOY STEEL
20	STUD FASTENER	CARBON STEEL
21	CYLINDER	SEE SEPERATE SPEC. DRAWING
22	HW ADAPTER	CAST IRON ASTM A-48 CL.40
23	CAPSCREW	CARBON STEEL SAE GR. 2
Δ 24	WARNING TAG	SHUT OFF PRESSURE BEFORE OPENING



SECTION A-A

1	7/22/11	JTC	ADDED WARNING TAG	RCB
REV	DATE	BY	DESCRIPTION	APP.
<b>PRATT</b> HENRY PRATT COMPANY AURORA, ILL.				
CROSS SECTION PARTS AND MATERIAL LIST MDT-2S CYLINDER HANDJACK ACTUATOR				
SCALE	NONE	DATE	11-1-05	
DRAWN BY	ES	CHECKED BY	RCB	
APPROVED		GA=BORDER		
DRWG. NO.	GA-11496	REV	1	A/C