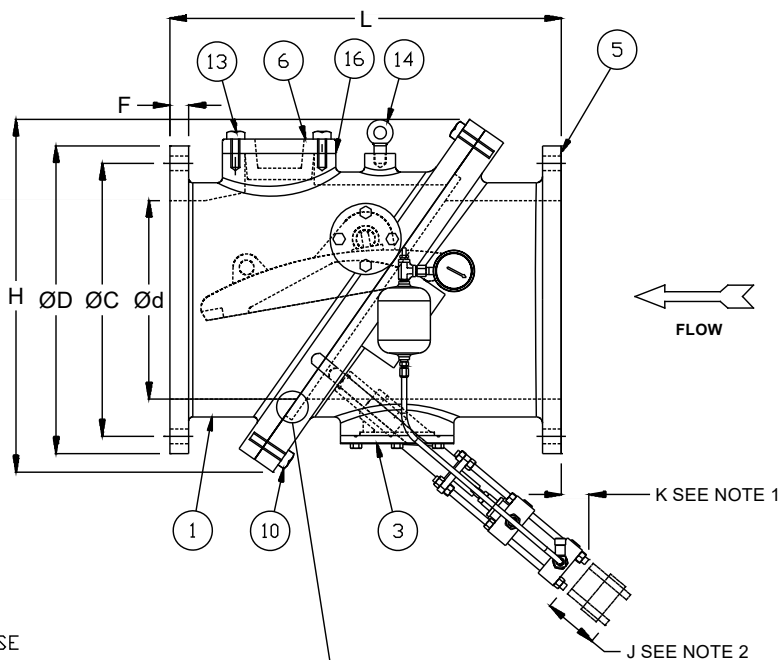
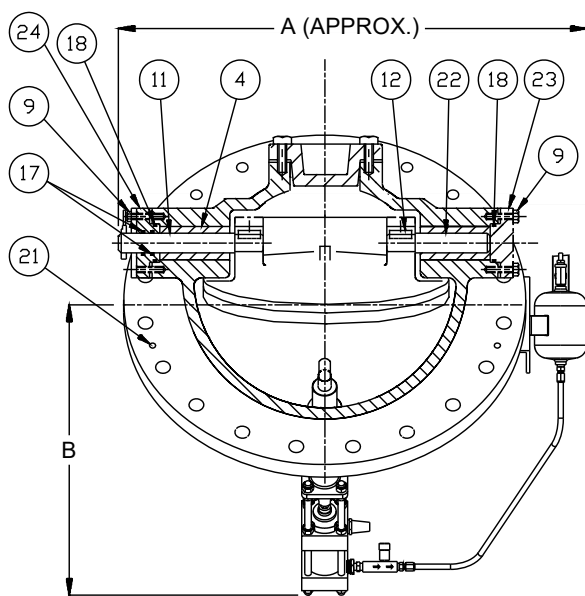


VALVE SIZE	A	B	ØC	ØD	Ød	F	H	J	K	L
8"	24"	14"	11-3/4"	13-1/2"	8"	1-1/8"	16"	4"	2"	19-1/2"
10"	28"	18"	14-1/4"	16"	10"	1-3/16"	18"	5"	4"	24-1/2"
12"	31"	19"	17"	19"	12"	1-1/4"	21"	5"	4"	24"
14"	34"	22"	18-3/4"	21"	14"	1-3/8"	23-3/4"	6"	5"	30"
16"	37"	24"	21-1/4"	23-1/2"	16"	1-7/16"	26-3/16"	6"	2"	30"
18"	41"	25"	22-3/4"	25"	18"	1-9/16"	30"	6"	12"	33"
20"	46"	28"	25"	27-1/2"	20"	1-11/16"	32"	5"	2"	32"
24"	53"	30"	29-1/2"	32"	24"	1-7/8"	37"	6"	N/A	38"
30"	61"	37"	36"	38-3/4"	30"	2-1/8"	43-1/2"	7"	N/A	52"
36"	71"	40"	42-3/4"	46"	36"	2-3/8"	51"	8"	N/A	59-1/2"
48"	94"	52"	56"	59-1/2"	48"	2-3/4"	68-1/2"	15"	N/A	65"

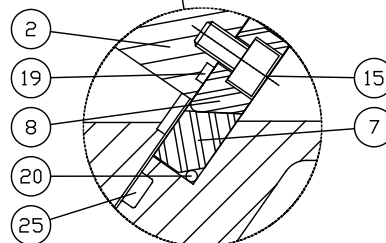


NOTE:

- DIM. K NOT APPLICABLE FOR 24"-48" VALVES BECAUSE DASHPOT FALLS WITHIN FLANGE FACE.
- MINIMUM DISTANCE FOR LOWER DASHPOT REMOVAL.
- SEE DRAWING GA-11670 FOR DASHPOT DETAILS.
- THE LOWER DASHPOT IS DESIGNED FOR MAXIMUM BACK PRESSURE OF 150 PSI.

MATERIAL OPTIONS AS CHECKED

TILTED DISC CHECK VALVE WITH LOWER DASHPOT ASSEMBLY		
No.	PART NAME	MATERIALS
1	TOP BODY	DUCTILE IRON ASTM A-536 GR.65-45-12
2	DISC	DUCTILE IRON ASTM A-536 GR.65-45-12
3	LOWER DASHPOT ASSY	DUCTILE IRON ASTM A-536 GR.65-45-12
4	SLEEVE	BRONZE B62 ALLOY C83600
5	BOTTOM BODY	DUCTILE IRON ASTM A-536 GR.65-45-12
6	BODY END PLATE	DUCTILE IRON ASTM A-536 GR.65-45-12
7	BODY SEAT RING	STAINLESS STEEL ASTM A-276 TYPE 304
8	DISC SEAT RING	STAINLESS STEEL ASTM A-276 TYPE 304
9	END PLATE BOLTS	ZINC COATED STEEL ASTM A-307 GR.B
10	BODY BOLT	ZINC COATED STEEL ASTM A-307 GR.B
11	HINGE PIN	STAINLESS STEEL ASTM A-276 TYPE 304
12	KEY	STAINLESS STEEL ASTM A-276 TYPE 304
13	END PLATE BOLTS	ZINC COATED STEEL ASTM A-307 GR.B
14	EYE BOLT	GALVANIZED STEEL
15	SOCKET HEAD BOLTS	STAINLESS STEEL TYPE 304
16	GASKET	NON ASBESTOS SHEET
17	O-RING	BUNA-N
18	O-RING	BUNA-N
19	DISC O-RING	BUNA-N
20	BODY O-RING	BUNA-N
21	PIN	STAINLESS STEEL ASTM A-276 TYPE 304
22	HINGE PIN	STAINLESS STEEL ASTM A-276 TYPE 304
23	END PLATE	DUCTILE IRON ASTM A-536 GR.65-45-12
24	END PLATE	BRONZE B62 ALLOY C83600
25	O-RING	BUNA-N



DETAIL A

(BROKEN OUT SECTION, DISC SHOWN IN CLOSED POSITION)

REV	DATE	DESCRIPTION	DWN	APP
4	11/22/19	UPDATED DIMS & MTRL LIST. ADDED NOTE 4	AJM	JL
3	10/17/16	ADDED SIZES & WEIGHT	VL	PPS
2	10/10/16	CHANGED MATERIALS	VL	PPS
1	9/22/16	ADDED SIZE 48"	VL	PPS

PRATT
MUELLER brand

GENERAL ARRANGMENT DRAWING
TILTED DISC CHECK VALVE
WITH LOWER DASHPOT ASSEMBLY
150 PSI

SCALE NONE DATE 4/28/14

DRAWN BY JUR CHECKED BY SS

APPROVED _____ GA=BORDER

DRWG. NO. GA-11669 REV 4 A/C