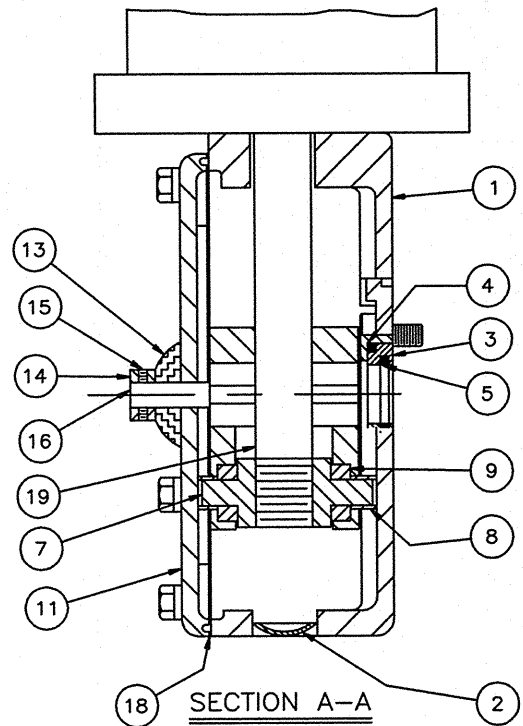
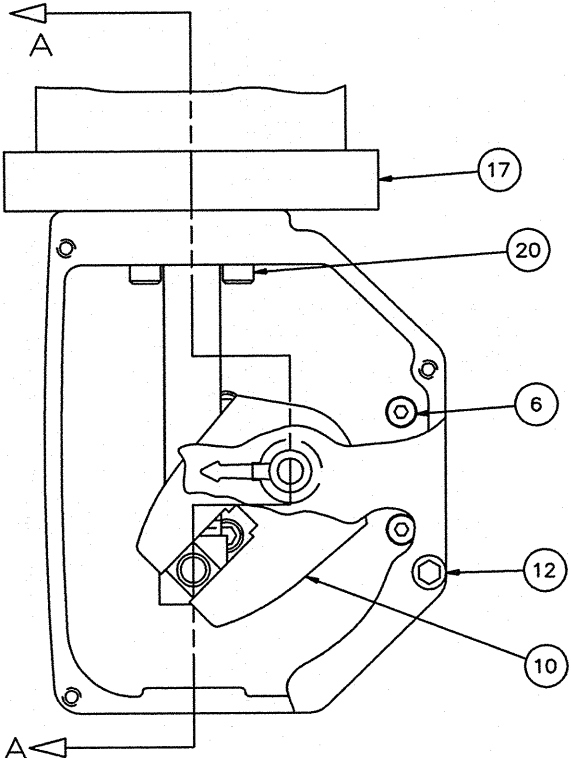


ITEM	DESCRIPTION	DESCRIPTION
1	HOUSING	CAST IRON ASTM A-126 CLASS B
2	EXP. PLUG	STAINLESS STEEL TYPE 304
3	INSERT	NORYL GRADE GFN3-780
4	O-RING	BUNA-N
5	O-RING	BUNA-N
6	CAPSCREW	ALLOY STEEL
7	SLIDER NUT	DUCTILE IRON ASTM A-536 GRADE 80-55-06
8	SLIDER TUBE	CARBON STEEL
9	SLIDER BLOCK	SINTERED IRON ASTM B-439 GRADE 3
10	LEVER	DUCTILE IRON ASTM A536 GRADE (65-45-12)
11	COVER	CAST IRON ASTM A126 CL. B
12	CAP SCREW	STAINLESS STEEL TYPE 304

ITEM	DESCRIPTION	DESCRIPTION
13	GROMMET	NEOPRENE
14	INDCTR. ARROW	DIE CAST CHROME PLATE
15	SET SCREW	ALLOY STEEL
16	STUD FASTENER	CARBON STEEL
17	CYLINDER	FOR MATERIAL SPEC SEE DWG. GA-12224
18	GASKET	BLENDED FIBER, CURED NITRILE BINDER
19	SHAFT	STAINLESS STEEL TYPE 316
20	CAPSCREW	CARBON STEEL SAE GRADE 2



△	3/9/12	MEM	UPDATED DWG NO	<i>RCB</i>
REV	DATE	BY	DESCRIPTION	APP.
<b>PRATT</b> HENRY PRATT COMPANY AURORA, ILL.				
CROSS SECTION PARTS AND MATERIAL LIST MDT-2S CYLINDER				
SCALE	NONE	DATE	10-28-05	
DRAWN BY	ES	CHECKED BY	RCB	
APPROVED	GA=BORDER			
DRWG. NO.	GA-11490	REV	1	△/C