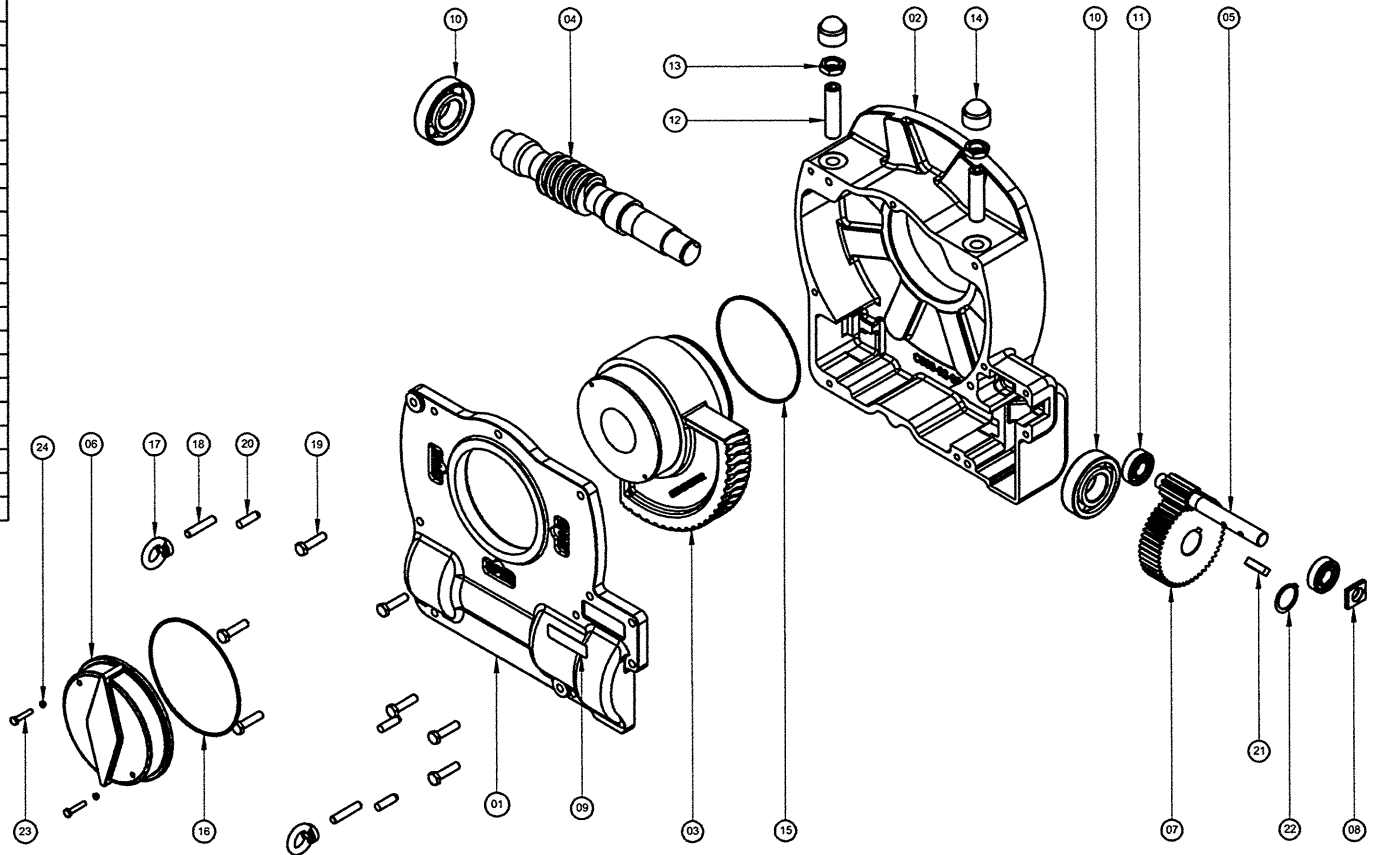


| ITEM | PART | QTY | DESCRIPTION |
|------|----------------------|-----|---------------------|
| 01 | COVER | 1 | GREY CAST IRON |
| 02 | GEARCASE | 1 | GREY CAST IRON |
| 03 | QUADRANT | 1 | DUCTILE IRON |
| 04 | WORMSHAFT | 1 | 4140 STEEL 28-32 RC |
| 05 | INPUT PINION | 1 | 4140 STEEL 28-32 RC |
| 06 | INDICATOR CAP | 1 | GREY CAST IRON |
| 07 | SPUR WHEEL | 1 | 4140 STEEL 28-32 RC |
| 08 | OIL SEAL | 1 | HYTREL 5526 |
| 09 | NAMEPLATE | 1 | STICKY LABEL |
| 10 | WORMSHAFT BEARING | 2 | BALL BEARING |
| 11 | PINION SHAFT BEARING | 2 | BALL BEARING |
| 12 | STOP SCREW | 2 | HIGH TENSILE STEEL |
| 13 | LOCKNUT | 2 | CARBON STEEL |
| 14 | PROTECTION CAP | 2 | HYTREL 5526 |
| 15 | QUADRANT O-RING | 1 | BUNA-N |
| 16 | INDICATOR O-RING | 1 | BUNA-N |
| 17 | EYE NUT | 2 | CARBON STEEL |
| 18 | STUD | 2 | HIGH TENSILE STEEL |
| 19 | COVER SCREW | 7 | CARBON STEEL |
| 20 | DOWEL PIN | 3 | HARDENED STEEL |
| 21 | SPUR WHEEL KEY | 1 | CARBON STEEL |
| 22 | WHEEL CIRCLIP | 1 | CARBON STEEL |
| 23 | INDICATOR CAP SCREWS | 2 | CARBON STEEL |
| 24 | NYLTITE SEAL | 2 | NYLTITE |



NOTE:
 MEETS AWWA
 300 FT-LBS
 INPUT TORQUE
 REQUIREMENTS

| | | | | | |
|----------------------------------------------------------------------------------------------------------------------------|--|---------------------------------|-------------------|---------------------------------------------------------------------------------------------|-------------|
| UNLESS OTHERWISE SPECIFIED ALL DIMENSIONS ARE IN INCHES | | DRAWN BY: RW | | PRATT [®] Henry Pratt Company 401 S. Highland Ave Aurora, IL 60506 | C A D |
| TOLERANCES 1 PLACE (X.X) ± .030 2 PLACE (X.XX) ± .015 3 PLACE (X.XXX) ± .005 FRACTIONAL ± 1/64 ANGULAR ± 1° | | DRAWN DATE: 01/07/09 | | | |
| COMMON CENTER CIRCLES ARE WITHIN 0.010' T.I.R. | | APPROVED BY: <i>[Signature]</i> | | TITLE: PRATT WORMGEAR MODEL WG30-300 | |
| REMOVE ALL BURRS BREAK ALL SHARP EDGES ✓ = 125 MICRINCHES | | APPROVED DATE: 2-9-09 | | | |
| DO NOT SCALE DRAWING | | FILE LAST MODIFIED: | | PROPRIETARY INFORMATION DO NOT COPY OR REPRODUCE WITHOUT WRITTEN PERMISSION | |
| | | SIZE: B | PART # N/A | SHEET: 1 | |
| | | SCALE: None | DRAWING: GA-11880 | REV: 0 | |