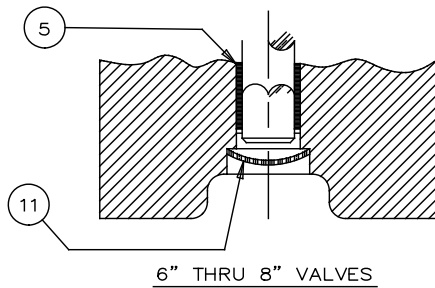


ITEM NO.	DESCRIPTION	MATERIALS
1	BODY	DUCTILE IRON ASTM A-536 (65-45-12)
2	DISC & EDGE	NICKEL ALUM BRONZE ASTM A-148/505 C95500
3	SHAFT	STAINLESS STEEL ASTM A-276 TYPE 316 (150 PSI VALVE) STN. STL. A-564 TYPE 630 COND. H-1150 (250 PSI VALVE)
4	SQUEEZE PIN	STAINLESS STEEL ASTM A-276 TYPE 316 (150 PSI VALVE) STN. STL. A-564 TYPE 630 COND. H-1150 (250 PSI VALVE)
5	BEARING	NYLATRON GS FLUOMETAL (250 PSI VALVE 6 & 8 ONLY) (PTFE IMPREGNATED w/ EXPANDED 317L METAL SHEET)
6	PACKING	RUBBER (EPDM)
7	KEY	AISI C1045 COLD DRAWN STEEL
8	COVER	DUCTILE IRON ASTM A-536 (65-45-12)
9	LOCKWASHER	STAINLESS STEEL TYPE 304
10	CAP SCREW	STAINLESS STEEL TYPE 304
11	EXP. PLUG	STAINLESS STEEL TYPE 304
12	SEAT	RUBBER (EPDM)



△				
△				
△				
△	02/26/16	JCL	CORRECTED TYPO	
REV	DATE	BY	DESCRIPTION	APP
PRATT [®] HENRY PRATT COMPANY AURORA, ILL.				
CROSS SECTION PARTS AND MATERIALS LIST 3"-20" BONDED SEAT VALVES 150B & 250B AlumBrz Disc				
SCALE	NONE	DATE	9/22/15	
DRAWN BY	AMJ	CHECKED BY		
APPROVED	SJS	GA=BORDER		
DRWG. NO.	GA-12091	REV	1	A/C