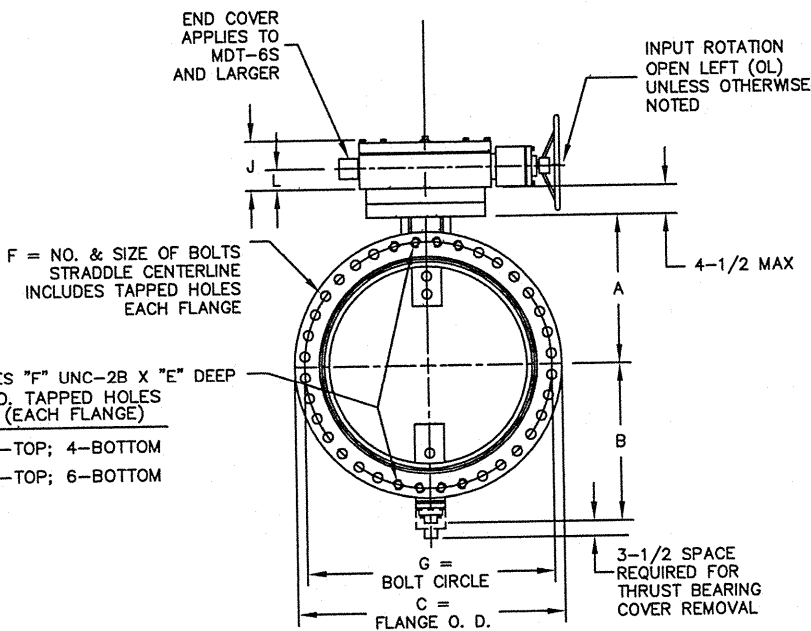
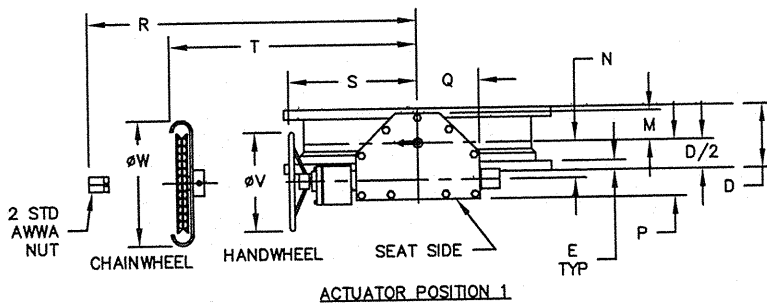


VALVE SIZE	A	B	C	D	E	F	G	H
78	50	54-5/8	93	18	3-1/4	64-2	89	6-7/8
84	54-7/8	59-5/8	99-3/4	24	3-7/8	64-2	95-1/2	8-5/16
96	68	75-3/4	113-1/4	24	4	68--2-1/4	108-1/2	10

ACTUATOR SIZE	J	L	M	N	P	Q	R	S	T	V	W	NUMBER OF TURNS
MDT-5S	8-5/16	3-15/16	5-1/2	7	10-1/2	15-15/16	19-7/8	20	19-13/16	24	22-1/4	136
MDT-6S	9-7/8	5-1/16	7	8-1/4	12-5/8	14-3/16	26-1/2	27-3/4	27-1/2	24	22-1/4	215
MDT-10	12-3/16	5-7/8	11-15/16	11-5/8	19-1/16	19-29/32	28-1/4	33-1/4	33-1/4	24	26	526
MDT-15	16-3/16	7-7/8	16-1/4	17-1/2	27-1/8	27-1/8	35-1/2	40-1/2	40-1/2	30	32	1200

NOTES:

- ALL DIMENSIONS SHOWN IN INCHES.
- "D" DIMENSION $\begin{smallmatrix} +1/8 \\ -0 \end{smallmatrix}$
- BOLT HOLES WILL BE 1/4" LARGER THAN DIAMETER OF BOLT.
- DIMENSIONS AND DRILLING OF END FLANGES CONFORM TO AWWA C-207 CLASS D 150 PSI.
- RECOMMENDATION FOR MATING FLANGES: WHERE INSULATING BUSHINGS ARE USED, IT IS NECESSARY THAT BOLT HOLES BE DRILLED OVERSIZE BY AN AMOUNT EQUAL TO TWO TIMES THE INSULATING SLEEVE THICKNESS TO MAINTAIN THE SAME MINIMUM CLEARANCE FOR BOLTS.
- CAUTION: IT IS RECOMMENDED THAT VALVES BE INSTALLED INTO PIPING SYSTEM IN ACCORDANCE WITH AWWA M-11 TO PREVENT ANY UNDUE PIPING STRESS, DEFLECTION OR BENDING THAT MAY AFFECT THE PERFORMANCE OF THE VALVE.



1	7/13/17	LF	UPDATED ACTUATOR	
REV	DATE	BY	DESCRIPTION	APP.
PRATT HENRY PRATT COMPANY AURORA, ILL.				
150# XL BUTTERFLY VALVE FLANGED WITH MDT HANDWHEEL				
SCALE	NONE	DATE	5-9-12	
DRAWN BY	CEM	CHECKED BY	RTF	
APPROVED	GA=BORDER			
DRWG. NO.	GA-12246	REV	1	A/C