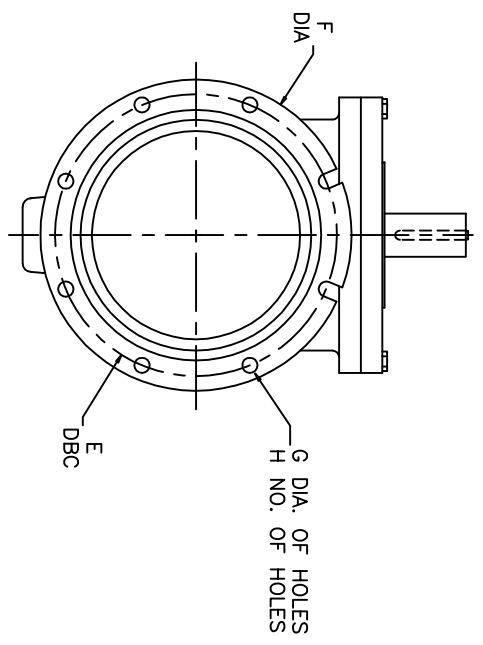
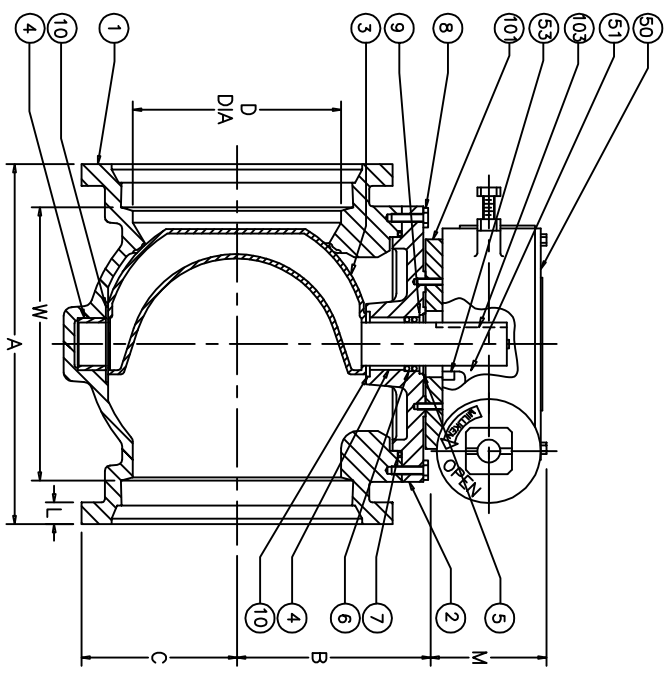
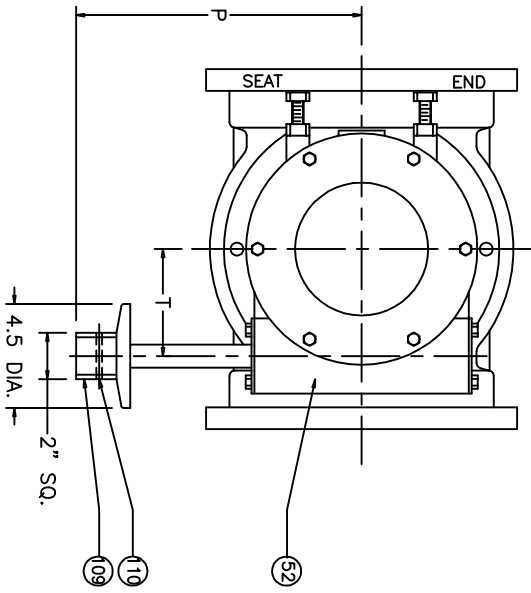
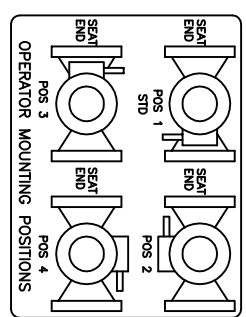


REFERENCE ONLY



VALVE SIZE	GEAR SIZE	A	B	C	D	E	F	G	H	L	M	P	T	W
3	M3	11.50	3.41	3.84	3	6.19	7.69	0.75	4	0.94	3.44	8	2.56	6.50
4	M3	14.25	4.38	4.50	4	7.50	9.00	0.88	4	1	3.88	8	2.56	9.25
6	M3	15.75	5.63	5.75	6	9.50	11.13	0.88	6	1.06	3.88	8	2.56	10.75
8	M5	17.38	7.56	7.63	8	11.75	13.38	0.88	6	1.13	4.31	8	3.16	12.38
10	M8	19.38	9.25	8.88	10	14	15.63	0.88	8	1.19	5.25	10	4.63	14.38
12	M8	20.75	10.88	10	12	16.25	17.94	0.88	8	1.25	5.25	10	4.63	15.75



THIS DRAWING IS THE PROPERTY OF HENRY PRATT COMPANY AND MUST NOT BE USED IN ANY WAY PREJUDICIAL TO THEIR INTERESTS

\*3"-8" HAVE RISER RING.

110	1	SPRING PIN	STEEL
109	1	2" NUT	DUCTILE IRON
103	1	KEY	STEEL
*101	1	RISER RING	STEEL
53	2	SLEEVE BEARING	BRONZE
52	1	WORM GEAR	STEEL
51	1	QUAD GEAR	DUCTILE IRON
50	1	GEAR OPERATOR	
10	2	GRIT SEAL	PTFE
9	1	SEAL RETAINING RING	BRASS
8	AR	H.H.CAP SCREW	<input type="checkbox"/> STEEL <input type="checkbox"/> STN. STEEL
7	1	O RING	ELAS AS SPEC.
6	2	U CUP SEAL	ELAS AS SPEC.
5	1	SNAP RING	SPRING STEEL
4	2	SLEEVE BEARING	STN. STEEL
3	1	PLUG ELASTOMER AS SPEC.	DUCTILE IRON
2	1	CAP	CAST IRON
1	1	BODY	CAST IRON

DATE	REVISIONS	BY	TITLE
11/7/91	ITEM 8 WAS BRONZE	CR	3"-12" PLUG VALVE, MJ ENDS GEAR OPERATED W/ 2" NUT
2/09/08	3" C WAS 3.75"	JC	
3/02/10	ITEM 50 MTRL CHANGED FROM CAST TO LEGR# 2521	UC	
4/09/12	CHANGES IN THE "B" DIM IN DIM TABLE [EGR# 5841]	AA	
5/01/13	BOM STANDARDIZATION OF MATERIAL LIST	AA	

HENRY PRATT COMPANY  
AURORA, ILL.

DATE: 10/95  
SCALE: NONE  
DIMENSIONS: INCHES

CHK'D: \_\_\_\_\_  
DWG. NO.: HP49012