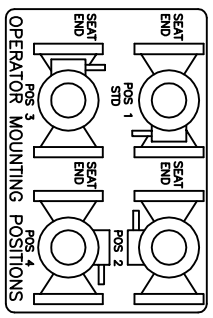


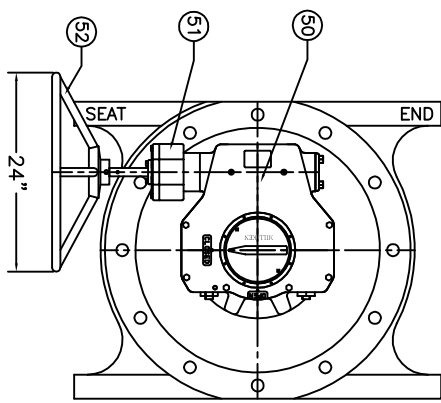
VALVE SIZE	A	B	C	D	E	F	G	H	L
36	60	27.63	29	36	42.75	46	1.63	32	2.38
42	72	27.63	29	42	49.50	53	1.63	36	2.63

REFERENCE ONLY

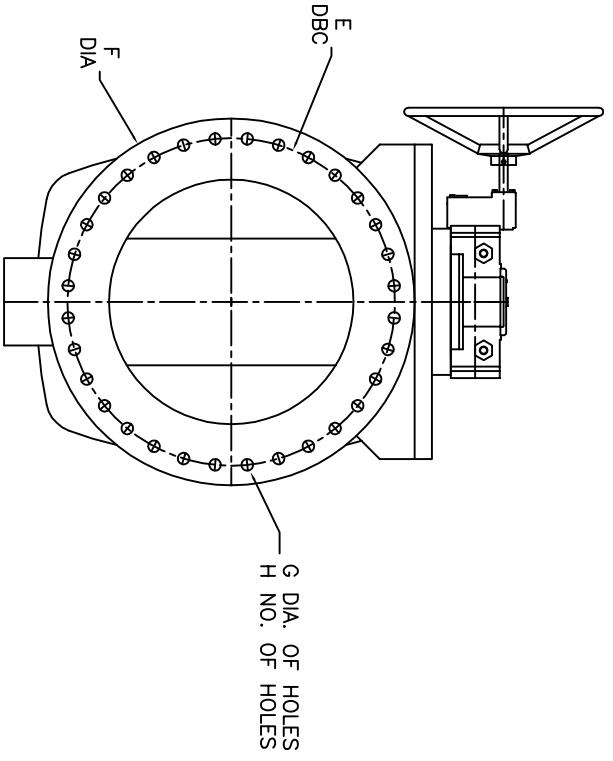
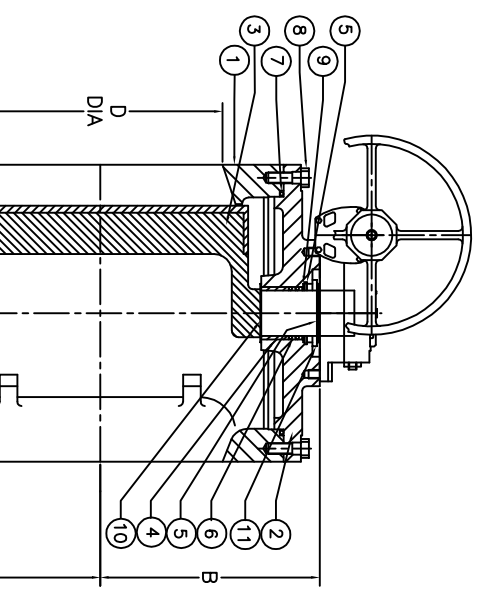
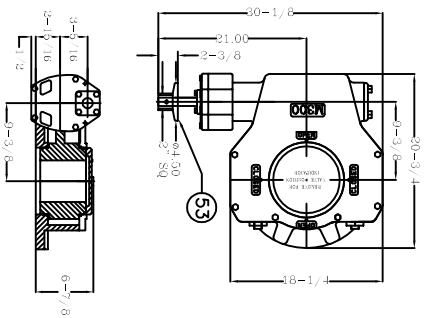


THIS DRAWING IS THE PROPERTY OF HENRY PRATT COMPANY AND MUST NOT BE USED IN ANY WAY PREJUDICIAL TO THEIR INTERESTS

ABOVE GROUND GEAR w/HANDWHEEL.



BURIED SERVICE GEAR w/2" NUT



53	1	2" NUT OPTION	DUCTILE IRON
52	1	HANDWHEEL OPTION	DUCTILE IRON
51	1	SPUR GEAR	-
50	1	GEAR OPERATOR	-
15	AR	LOCKWASHER	STEEL/ZINC
14	AR	H.H. CAP SCREW	STEEL/ZINC
13	1	TRUNION COVER	CAST IRON
12	1	O RING	ELAS. AS SPEC.
11	1	SUPPORT WASHER	STEEL
10	2	GRIT SEAL	PTFE
9	1	SEAL RETAINING RING	STEEL
8	AR	H.H. CAP SCREW	STEEL/ZINC
7	1	O RING	ELAS. AS SPEC.
6	2	U CUP SEALS	ELAS. AS SPEC.
5	2	SNAP RING	SPRING STEEL
4	2	SLEEVE BEARING	STN. STEEL
3	1	PLUG ELASTOMER AS SPEC.	CAST IRON
2	1	CAP	CAST IRON
1	1	BODY	CAST IRON

ISSUE NUM.		BY TITLE:	
DATE	REVISIONS	BY	TITLE:
			36" & 42" PLUG VALVE FLANGED w/ M300 GEAR
PRATT® HENRY PRATT COMPANY AURORA, ILL.		BY	DWG. NO. HP49857
DATE	REVISIONS	BY	TITLE: