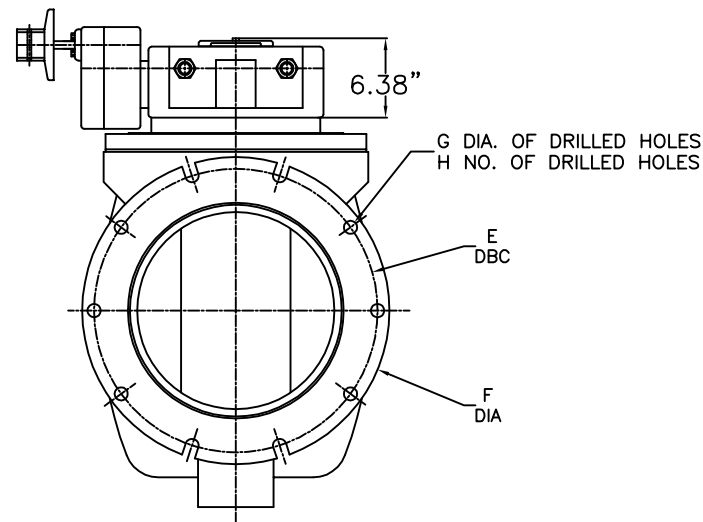
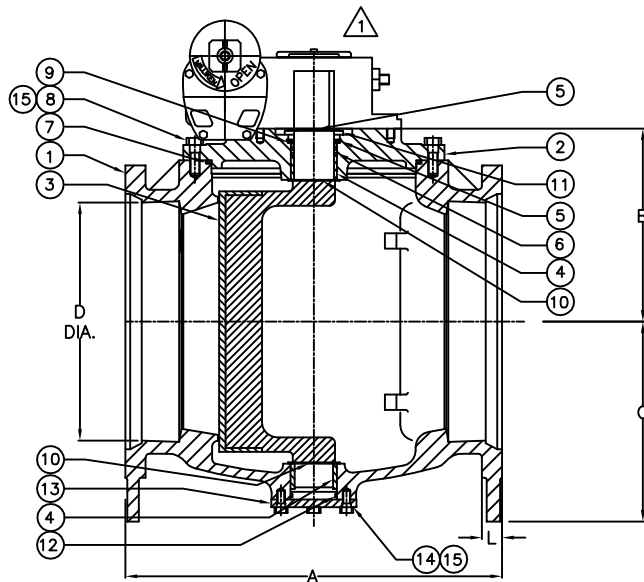
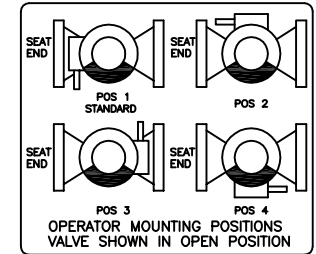
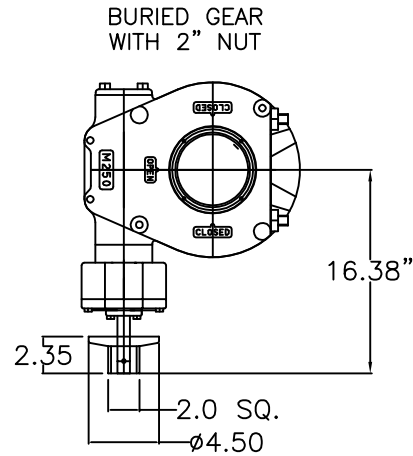
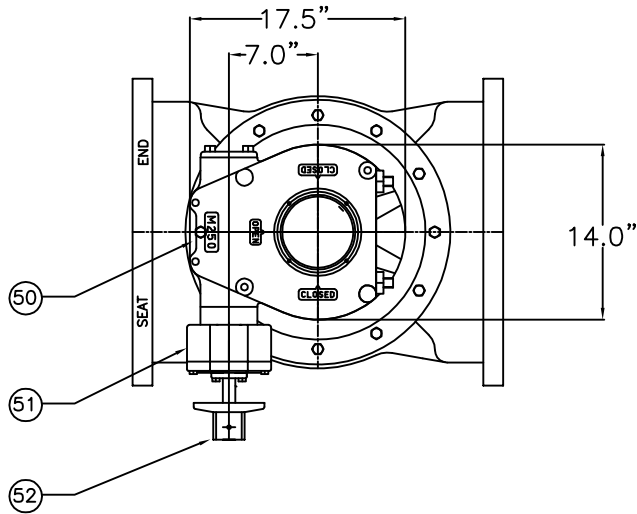


VALVE SIZE	A	B	C	D	E	F	G	H	L
24	42	19.38	21.63	24	30.00	31.50	0.88	16	1.62
30	51	23.44	24.75	30	36.88	39.13	1.13	20	1.81



52	1	2" NUT	DUCTILE IRON
51	1	SPUR GEAR	-
50	1	GEAR OPERATOR	-
15	AR	LOCKWASHER	<input type="checkbox"/> STEEL <input type="checkbox"/> STN. STEEL
14	AR	H.H. CAP SCREW	<input type="checkbox"/> STEEL <input type="checkbox"/> STN. STEEL
13	1	TRUNNION COVER	CAST IRON
12	1	O RING	ELAS. AS SPEC.
11	1	SUPPORT WASHER	STEEL
10	2	GRIT SEAL	PTFE
9	1	SEAL RETAINING RING	STEEL
8	AR	H.H. CAP SCREW	<input type="checkbox"/> STEEL <input type="checkbox"/> STN. STEEL
7	1	O RING	ELAS. AS SPEC.
6	2	U CUP SEALS	ELAS. AS SPEC.
5	2	SNAP RING	SPRING STEEL
4	2	SLEEVE BEARING	STN. STEEL
3	1	PLUG ELASTOMER AS SPEC.	DUCTILE IRON
2	1	CAP	CAST IRON
1	1	BODY	CAST IRON

ITEM	QTY.	DESCRIPTION	MATERIAL
<b>PRATT</b>			
		BY JC	DATE 06/09
		CHK'D	SCALE NONE
		DIMENSIONS INCHES	
ISSUE NUMBER	DATE	REVISIONS	BY CHK
1	07/09	REVISED GEAR & ADDED 30" VALVE DIMENSIONS [ECR# 164]	JC JC
2	04/14	REVISED "L" DIMENSIONS FROM 1.88 AND 2.12 TO 1.82 AND 1.81	JC JC
3	09/14	ADDED D.I. MAT. TO PLUG	AA AA
4	11/17	UPDATED TITLE BLOCK AND MATERIAL LIST	JCL JL
TITLE:			24"-30"
			FIG. 600 MPV, MJ ENDS W/ M250 GEAR WITH 2" NUT
DWG. NO.			HP49858