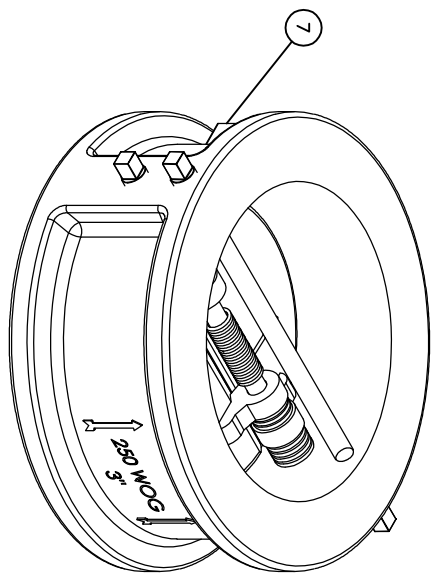
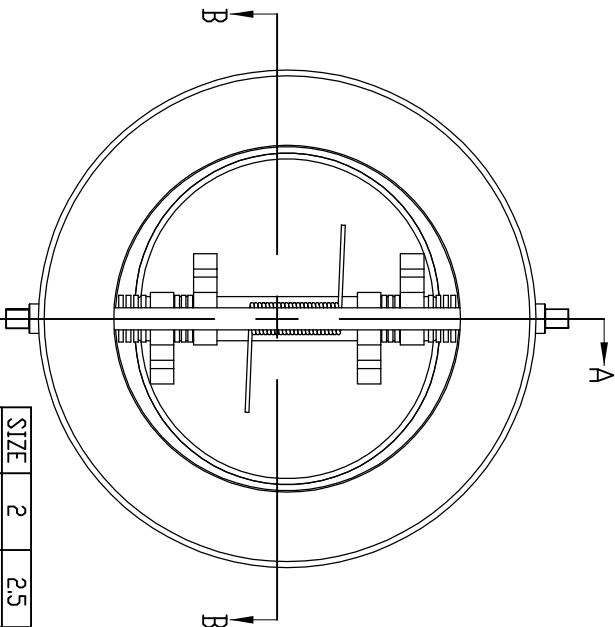
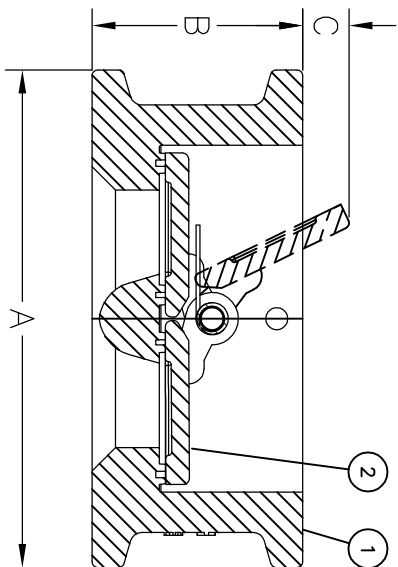


REFERENCE ONLY

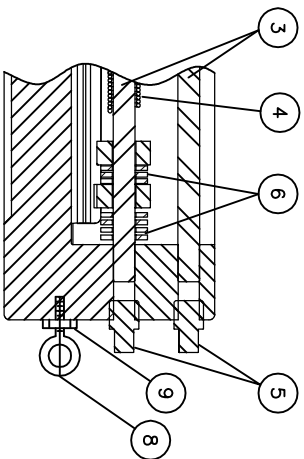


ISOMETRIC VIEW

SIZE	2	2.5	3	4	5	6	8	10	12	14	16	18	20	24	30	A	A	A	A
A	4.10	4.88	5.33	6.88	7.75	8.75	11.00	13.38	16.13	17.75	20.25	21.63	23.88	28.25	34.75	41.25	47.88	54.50	
B	2.13	2.13	2.25	2.50	2.75	3.00	3.75	4.25	5.63	7.25	7.50	8.00	8.38	8.75	12.00	15.25	17.00	20.63	
C	-	0.16	0.63	0.94	1.34	1.72	2.50	3.38	4.13	3.13	4.38	5.13	6.00	8.50	11.00	11.38	12.75	19.70	
WT	8.80	12.60	18.30	26.20	34.80	42.10	75.00	119.50	188.10	227.30	282.20	337.30	370.60	638.20	1050	1600	2090	3400	



SECTION B-B



PARTIAL SECTION A-A

NOTES: A

- 1- VALVE SIZE MARKINGS WILL CHANGE ACCORDING TO VALVE SIZE.
- 2- EYE BOLT AND HEX NUT PROVIDED ON 8" AND LARGER VALVES.
- 3- 4 TO 6 MILS INTERIOR AND EXTERIOR AMERLOCK 400 BLUE EPOXY

ITEM	QUANTITY	DESCRIPTION	MATERIAL
1	1	BODY/SEAT	DUCTILE IRON/EPDM
2	2	DISC	304 STAINLESS STEEL
3	2	SHAFT	304 STAINLESS STEEL
4	2	SPRING	316 STAINLESS STEEL
5	4	PLUG	304 STAINLESS STEEL
6	AR	WASHER	304 STAINLESS STEEL
7	1	NAME PLATE	ALUMINUM
8	2	EYE BOLT	STEEL
9	2	HEX NUT	STEEL

MATERIAL LIST



REVISIONS

ISSUE	CHANGE NO. OR DESCRIPTION	DATE	BY
1	ADDED 304 & 316 SIZES (EOP 803)	09/12	AK
2	ADDED PAINT INFORMATION NOTE 3	07/12	JC
3	ADDED 2" & 4" VALVE DIMENSIONS	09/13	AK
4	REVISED MATERIAL INFORMATION	08/17	AK
5	REVISED MATERIAL PER FIG 506	07/17	AK

TITLE: Δ 2" TO 48" FIG. 740A
DOUBLE DISC CHECK VALVE

250 WOG

DRAWING NO.: HP50612

1 2 3 4