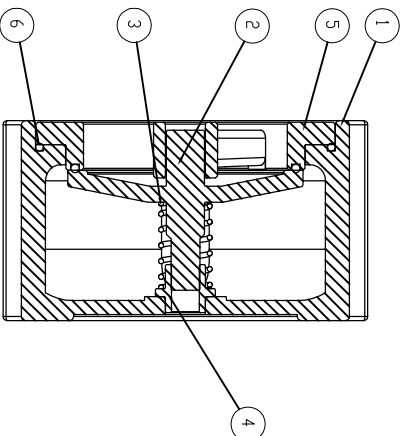
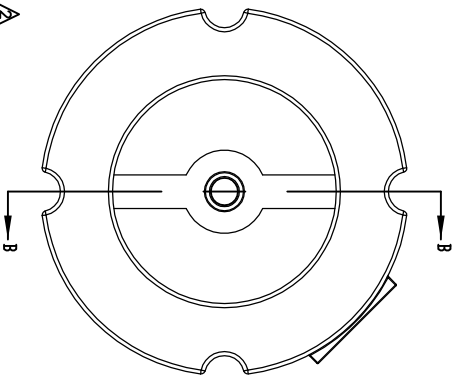
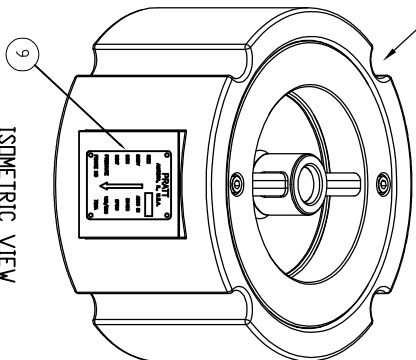
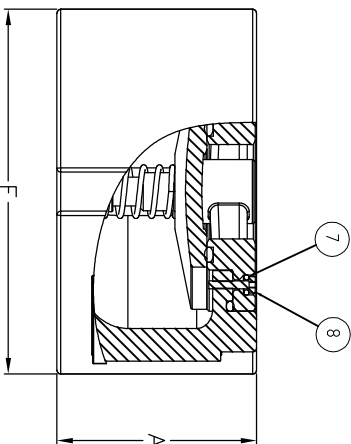
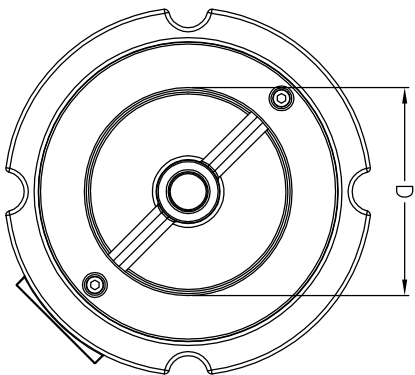


COMPACT WAFER CHECK VALVES						
SIZE	A	B	C	D	E	F
2"	2.625	0.750	4	2.0	4.750	4.250
2.5"	2.875	0.750	4	2.5	5.500	5.000
3"	3.125	0.750	4	3.0	6.000	5.750
4"	4.000	0.750	8	4.0	7.500	7.000
5"	4.750	0.875	8	5.0	8.500	8.750
6"	5.500	0.875	8	6.0	9.500	9.750
8"	6.500	0.875	8	8.0	11.750	13.500
10"	8.250	1.000	12	10.0	14.250	16.000
12"	11.250	1.000	12	12.0	17.000	19.125

REFERENCE ONLY



SECTION B-B

ITEM	QUANTITY	DESCRIPTION	MATERIAL
1	1	NAME PLATE	STAINLESS STEEL / ALUMINIUM
2	1	SEAT	304 STAINLESS STEEL / EPDM
3	1	BUSHING	304 STAINLESS STEEL
4	1	SPRING	304 STAINLESS STEEL
5	1	O-RING	EPDM
6	1	DISC	304 STAINLESS STEEL
7	1	RUBBER SEAL	EPDM
8	1	SHCS	304 STAINLESS STEEL
9	1	AR	304 STAINLESS STEEL

THIS DRAWING IS THE PROPERTY OF  
**HENRY PRATT CO.**  
AND  
MUST NOT BE USED IN ANY WAY  
PREJUDICIAL TO THEIR INTERESTS

REVISIONS	DATE	BY	TYPE
1	07/12	JC	UC
2	08/13	JC	UC
3			
4			

- NOTES:  $\Delta\Delta$
- 1- THE 12" SIZE HAS THREADED HOLES INSTEAD OF GROOVES.
  - (12) HOLES 7/8-9 UNC TAP, 1-1/2 DEEP MAX., 17 D.B.C. ON EACH FACE
  - 2- COMPACT SILENT CHECK VALVES ARE DESIGNED TO FIT INSIDE ANSI 125 AND 250 BOLT CIRCLES.
  - 3- 10 TO 12 MILS INTERIOR AND EXTERIOR AMERLOCK 400 BLUE EPOXY

REVISIONS	DATE	BY	TYPE
1	07/12	JC	UC
2	08/13	JC	UC
3			
4			

2" TO 12" FIG. 720A  
COMPACT WAFER CHECK VALVE  
250 WOG

DRAWING NO.: HP50613