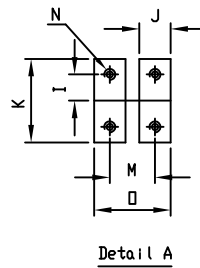
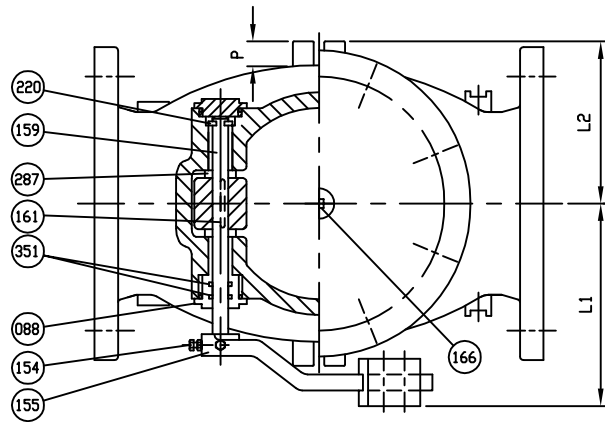


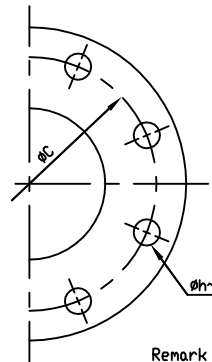
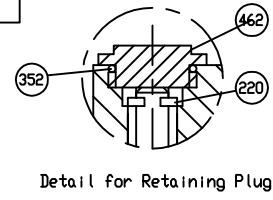
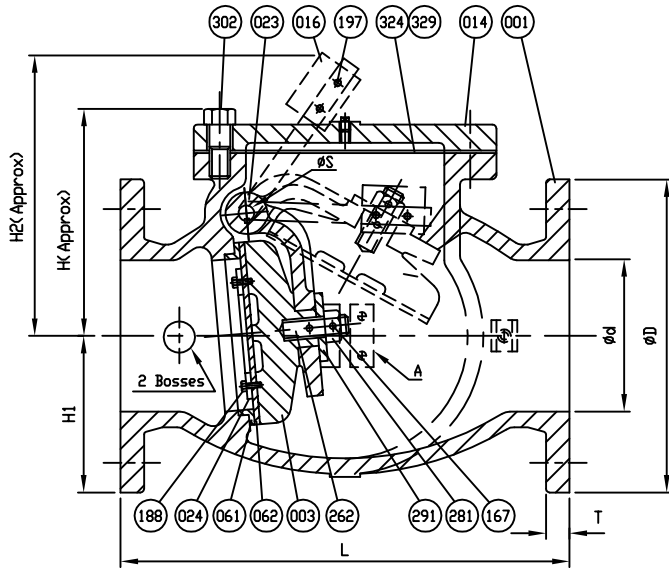
REFERENCE ONLY



MARKING
 SIZE (INCH)
 CCNE
 200 CWP
 AWWA C508
 SERIES 8000

SC1
 YEAR
 POURING DATE

COVER BOLTS/NUTS	
TYPE	MATERIAL
STANDARD	STEEL/ZINC
S1	304 STN. STEEL
S3	316 STN. STEEL



Remark - Part No. 024 (Seat Holder)
 - size 2'-6' => Cast Iron
 - size 8'-12' => Ductile Iron

462	Retaining Plug	Brass	B 21	1
352	O-Ring C	Rubber (Buna N)	D 2000 BK 707	2
351	O-Ring B	Rubber (Buna N)	D 2000 BK 707	2
329	Cover O-Ring	Rubber (Buna N)	D 2000 BK 807	1
324	Cover Gasket	Rubber (Buna N)	D 2000 BK 807	1
302	Cover Bolt	See Cover Bolt Table		1 set
291	Washer	Brass	B 21	1
287	Spacer	Brass	B 21	2
281	Disc Nut	Brass	B 21	1
262	Disc Stud	Brass	B 21	1
220	Snap Ring	Stainless Steel	A 276 Type 420	1
197	Weight Bolt & Nut	Zinc Coated Steel	A 307 Grade B	2
188	Disc Seat Bolt	Stainless Steel	A 276 Type 304	1 set
167	Pin	Stainless Steel	A 276 Type 304	2
166	Plug	Stainless Steel	A 276 Type 304	1
161	Key	Stainless Steel	A 276 Type 304	1
159	Hinge Pin	Stainless Steel	A 276 Type 304	1
155	Weight Arm	Ductile Iron	A 536 Gr. 65-45-12	1
154	Bolt & Nut	Zinc Coated Steel	A 307 Grade B	2
088	Seat Nut	Brass	B 21	1
062	Disc Seat Ring	Rubber (Buna N)	D 2000 BK 807	1
061	Body Seat Ring	Bronze	B 62	1
024	Seat Holder	See Remark		1
023	Arm	Ductile Iron	A 536 Gr. 65-45-12	1
016	Weight	Cast Iron	A 126 Class B	1
014	Cover	Cast Iron	A 126 Class B	1
003	Disc	Cast Iron	A 126 Class B	1
001	Body	Cast Iron	A 126 Class B	1
NO.	PARTS	MATERIAL	ASTM DESIGNATION	Q'TY

MATERIAL LIST			
HYDRO SHELL		400	PSI.
HYDRO VALVE SEAT		200	PSI.
HYDRO BACK SEAT		-	PSI.
AIR SEAT		-	PSI.
STEAM		-	PSI.

TEST PRESSURE	
WORKING PRESSURE	200 PSI.

PRATT

SCALE	DR. JON COLPAN	DATE 10/20/10	REF. DWG.
N.T.S.	CHK.	APP.	E.C.N.
			USA1361D

TITLE
 SIZE 2" TO 12" SWING CHECK VALVE AWWA C508
 BRONZE BODY SEAT RING & BUNA N DISC SEAT RING
 WITH ONE LEVER AND WEIGHT

TYPE:	8001AB1LW	DWG NO.	HP80001	REV.	4
-------	-----------	---------	---------	------	---

SIZE ød in. mm.	L	ANSI B16.1 CL. 125					øS	H	H1	H2	I	J	K	M	N	O	P	L1	L2	PLUG SIZE
		øD	øC	øh	n	T														
2 (50)	8	6	4 3/4	3/4	4	5/8	3/8	4 15/16	3	7 1/2	7/16	7/8	1 11/16	-	5/16 x 18 v < UNC	-	3/8	5 1/8	2 13/16	1/2
2 1/2 (65)	8 1/2	7	5 1/2	3/4	4	11/16	3/8	5 11/16	3 1/2	8 1/8	7/16	7/8	1 11/16	-	5/16 x 18 v < UNC	-	3/8	5 1/8	3 9/16	1/2
3 (80)	9 1/2	7 1/2	6	3/4	4	3/4	1/2	6 1/16	3 3/4	9 1/4	3/4	1 1/2	3	2 1/2	1/2 x 13 v < UNC	4	3/4	6 5/16	4 1/16	1/2
4 (100)	11 1/2	9	7 1/2	3/4	8	15/16	1/2	6 7/8	4 1/2	11 3/16	3/4	1 1/2	3	2 1/2	1/2 x 13 v < UNC	4	3/4	7 1/8	4 15/16	1/2
6 (150)	14	11	9 1/2	7/8	8	1	3/4	8 1/2	5 1/2	14 3/8	3/4	1 1/2	3	2 1/2	1/2 x 13 v < UNC	4	3/4	8 11/16	5 15/16	3/4
8 (200)	19 1/2	13 1/2	11 3/4	7/8	8	1 1/8	7/8	9 15/16	6 3/4	17 3/8	7/8	1 3/4	3 1/2	3 1/4	5/8 x 11 v < UNC	5	1 1/4	10 7/8	8 1/16	3/4
10 (250)	24 1/2	16	14 1/4	1	12	1 3/16	1	11 3/16	8	21 1/2	7/8	1 3/4	3 1/2	3 1/4	5/8 x 11 v < UNC	5	1 1/4	12 1/4	9 3/16	1
12 (300)	27 1/2	19	17	1	12	1 1/4	1 1/8	13 3/16	9 1/2	24 1/16	7/8	1 3/4	3 1/2	3 1/4	5/8 x 11 v < UNC	5	1 1/4	14 3/8	10 13/16	1