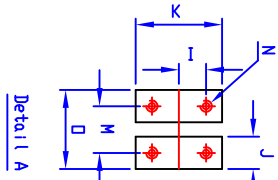
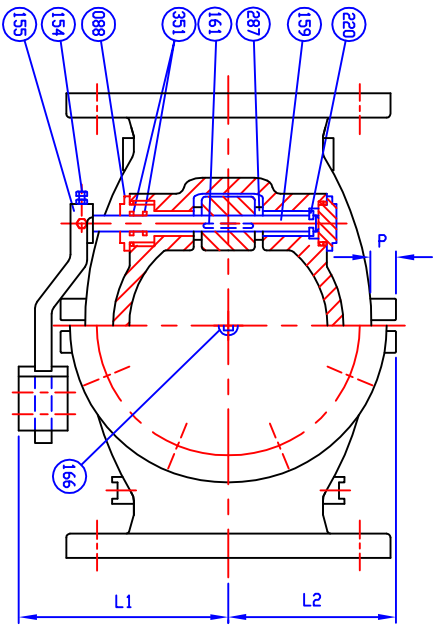


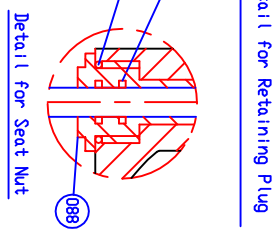
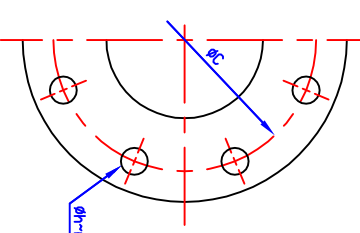
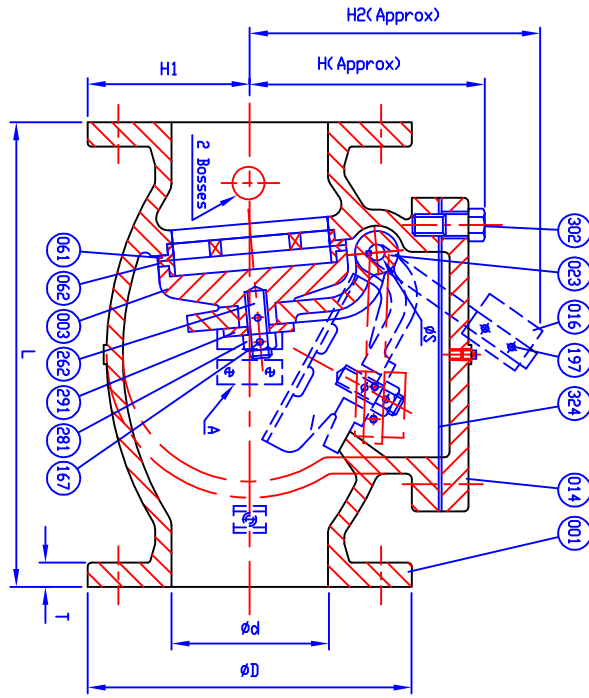
SUPPLIED WITH 8 MILS AMERLOCK 2 RED OXIDE EPOXY INTERIOR AND EXTERIOR OF THE VALVE

REFERENCE ONLY



VALVE SIZE	PLUG SIZE
2	1/2
2 1/2	1/2
3	1/2
4	1/2
6	3/4
8	3/4
10	1
12	1

MARKING  
SIZE (INCH)  
CONE  
200 C/P  
AWMA C508  
SERIES 8000  
PURGING DATE  
SC1  
YEAR



SIZE in. Ød mm.	L	ANSI B16.1 CL. 125					ØS	H	H1	H2	I	J	K	M	N	D	P	L1	L2
		ØD	ØC	Øh	n	T													
2 (50)	8	6	4 3/4	3/4	4	5/8	3/8	4 15/16	3	7 1/2	7/16	7/8	1 11/16	—	3/16 x 18 v (UNC)	—	3/8	5 1/8	2 13/16
2 1/2 (65)	8 1/2	7	5 1/2	3/4	4	11/16	3/8	5 11/16	3 1/2	8 1/8	7/16	7/8	1 11/16	—	5/16 x 18 v (UNC)	—	3/8	5 1/8	3 9/16
3 (80)	9 1/2	7 1/2	6	3/4	4	3/4	1/2	6 1/16	3 3/4	9 1/4	3/4	1 1/2	3	2 1/2	1/2 x 13 v (UNC)	4	3/4	6 5/16	4 1/16
4 (100)	11 1/2	9	7 1/2	3/4	8	15/16	1/2	6 5/8	4 1/2	11 3/16	3/4	1 1/2	3	2 1/2	1/2 x 13 v (UNC)	4	3/4	7 1/8	4 5/16
6 (150)	14	11	9 1/2	7/8	8	1	3/4	8 1/2	5 1/2	14 3/8	3/4	1 1/2	3	2 1/2	1/2 x 13 v (UNC)	4	3/4	8 1/16	5 15/16
8 (200)	19 1/2	13 1/2	11 3/4	7/8	8	1 1/8	7/8	9 15/16	6 3/4	17 3/8	7/8	1 3/4	3 1/2	3 1/4	5/8 x 11 v (UNC)	5	1 1/4	10 7/8	8 1/16
10 (250)	24 1/2	16	14 1/4	1	12	1 3/16	1	11 3/16	8	21 1/2	7/8	1 3/4	3 1/2	3 1/4	5/8 x 11 v (UNC)	5	1 1/4	12 1/4	9 3/16
12 (300)	27 1/2	19	17	1	12	1 1/4	1 1/8	13 9/16	9 1/2	24 1/16	7/8	1 3/4	3 1/2	3 1/4	5/8 x 11 v (UNC)	5	1 1/4	14 3/8	10 19/16

462	Retaining Plug	Brass	B 21	1
352	D-Ring C	Rubber (Buna N)	D 2000 BK 707	2
351	D-Ring B	Rubber (Buna N)	D 2000 BK 707	2
324	Gasket	Rubber (Buna N)	D 2000 BK 807	1
302	Cover Bolt	Zinc Coated Steel	A 307 Grade B	1 set
291	Washer	Brass	B 21	1
287	Spacer	Brass	B 21	2
281	Disc Nut	Brass	B 21	1
262	Disc Stud	Brass	B 21	1
220	Snap Ring	Stainless Steel	—	1
197	Weight Bolt & Nut	Zinc Coated Steel	A 307 Grade B	2
167	Pin	Stainless Steel	A 276 Type 304	2
166	Plug	Malleable Iron	A 47	1
161	Key	Stainless Steel	A 276 Type 304	1
159	Hinge Pin	Stainless Steel	A 276 Type 304	1
155	Weight Arm	Ductile Iron	A 536 Gr. 65-45-12	1
154	Bolt & Nut	Zinc Coated Steel	A 307 Grade B	2
088	Seat Nut	Brass	B 21	1
062	Disc Seat Ring	Bronze	B 62	1
061	Body Seat Ring	Bronze	B 62	1
023	Arm	Ductile Iron	A 536 Gr. 65-45-12	1
016	Weight	Cast Iron	A 126 Class B	1
014	Cover	Cast Iron	A 126 Class B	1
003	Disc	Cast Iron	A 126 Class B	1
001	Body	Cast Iron	A 126 Class B	1

MATERIAL LIST

ND.	PARTS	MATERIAL	ASTM DESIGNATION	Q'TY
HYDRD SHELL 400 PSI.				
HYDRD VALVE SEAT 200 PSI.				
HYDRD BACK SEAT — PSI.				
AIR SEAT — PSI.				
STEAM — PSI.				
TEST PRESSURE 200 PSI.				

WORKING PRESSURE 200 PSI.

# HENRY PRATT - CCNE

401 S. HIGHLAND AVE. AURORA, IL 60506  
PHONE: 630.844.4000; FAX: 630.844.4124

DR. JON COLPAN DATE 10/20/10 REF. DWG. USA1393C  
CHK. APP. ECN.

SIZE 2" TO 12" SWING CHECK VALVE AWMA C508  
BRONZE BODY SEAT RING & BRONZE DISC SEAT RING  
WITH ONE LEVER AND WEIGHT

8001ABBLW HP80002 REV.

DS01 ISSUED : 240640 REVISED: -