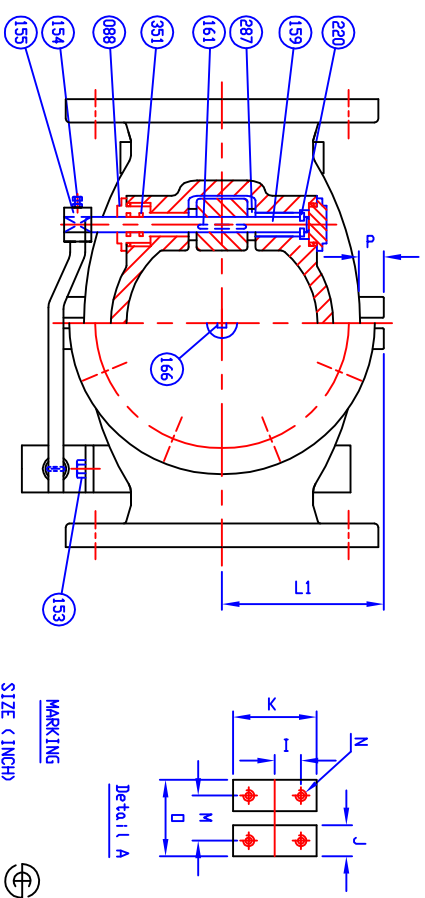


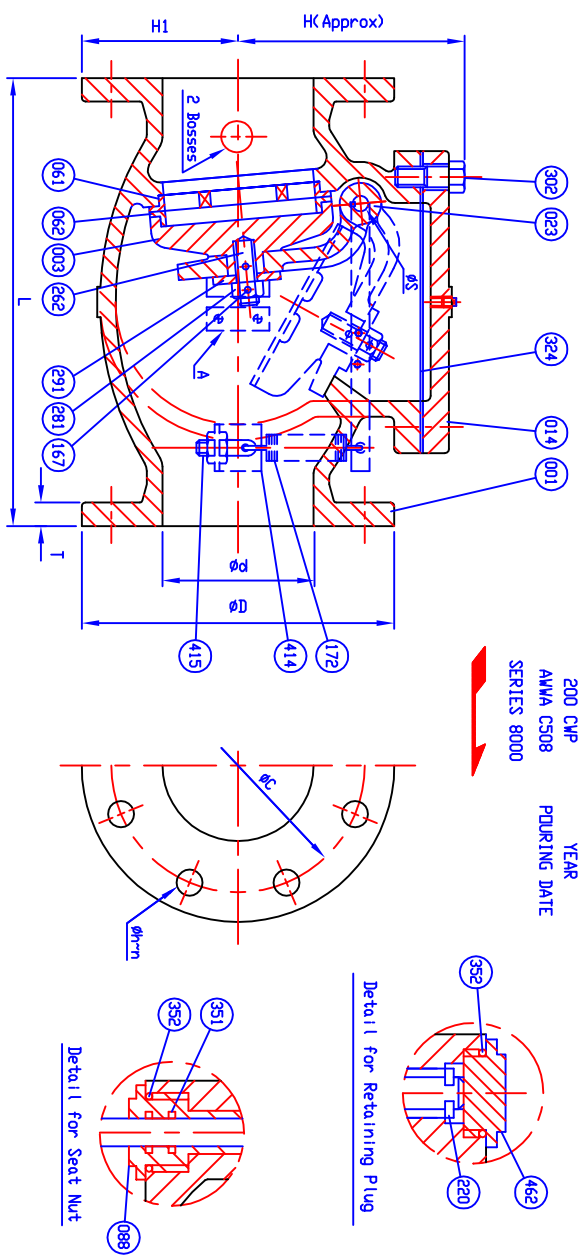
SUPPLIED WITH 8 MILS AMERLOCK 2 RED OXIDE EPOXY INTERIOR AND EXTERIOR OF THE VALVE

REFERENCE ONLY



VALVE SIZE	PLUG SIZE
2	1/2
2 1/2	1/2
3	1/2
4	1/2
6	3/4
8	3/4
10	1
12	1

MARKING
 SIZE (INCH)
 CCNE
 200 CMP
 AMWA C508
 SERIES 8000
 SCI
 YEAR
 POURING DATE



SIZE ød In. mm.	L	ANSI B16.1 CL.125					øS	H	H1	I	J	K	M	N	D	P	L1
		øD	øC	øh	n	T											
2 (50)	8	6	4 3/4	3/4	4	5/8	3/8	4 15/16	3	7/16	7/8	1 11/16	—	5/16x18v(UNC)	—	3/8	2 13/16
2 1/2 (65)	8 1/2	7	5 1/2	3/4	4	11/16	3/8	5 11/16	3 1/2	7/16	7/8	1 11/16	—	5/16x18v(UNC)	—	3/8	3 1/16
3 (80)	9 1/2	7 1/2	6	3/4	4	3/4	1/2	6 1/16	3 3/4	3/4	1 1/2	3	2 1/2	1/2x13v(UNC)	4	3/4	4 1/16
4 (100)	11 1/2	9	7 1/2	3/4	8	15/16	1/2	6 7/8	4 1/2	3/4	1 1/2	3	2 1/2	1/2x13v(UNC)	4	3/4	4 15/16
6 (150)	14	11	9 1/2	7/8	8	1	3/4	8 1/2	5 1/2	3/4	1 1/2	3	2 1/2	1/2x13v(UNC)	4	3/4	5 15/16
8 (200)	19 1/2	13 1/2	11 3/4	7/8	8	1 1/8	7/8	9 15/16	6 3/4	7/8	1 3/4	3 1/2	3 1/4	3/8x11v(UNC)	5	1 1/4	8 1/16
10 (250)	24 1/2	16	14 1/4	1	12	1 3/16	1	11 3/16	8	7/8	1 3/4	3 1/2	3 1/4	5/8x11v(UNC)	5	1 1/4	9 3/16
12 (300)	27 1/2	19	17	1	12	1 1/4	1 1/8	13 9/16	9 1/2	7/8	1 3/4	3 1/2	3 1/4	5/8x11v(UNC)	5	1 1/4	10 13/16

CALLOUT	DESCRIPTION	MATERIAL	GRADE	QTY
462	Retaining Plug	Brass	B 21	1
415	Stud Nut & Nut	Zinc Coated Steel	A 307 Grade B	1
414	Arm B	Zinc Coated Steel	A 36	1 set
352	D-Ring C	Rubber (Buna N)	D 2000 BK 707	1
351	D-Ring B	Rubber (Buna N)	D 2000 BK 707	2
324	Gasket	Rubber (Buna N)	D 2000 BK 807	1
302	Cover Bolt	Zinc Coated Steel	A 307 Grade B	1 set
291	Washer	Brass	B 21	1
287	Spacer	Brass	B 21	2
281	Disc Nut	Brass	B 21	1
262	Disc Stud	Brass	B 21	1
220	Snap Ring	Stainless Steel	A 36	1
172	Spring	Stainless Steel	A 276 Type 304	1
167	Pin	Stainless Steel	A 276 Type 304	2
166	Plug	Malleable Iron	A 47	1
161	Key	Stainless Steel	A 276 Type 304	1
159	Hinge Pin	Stainless Steel	A 276 Type 304	1
155	Weight Arm	Ductile Iron	A 536 Gr. 65-45-12	1
154	Bolt & Nut	Zinc Coated Steel	A 307 Grade B	2
153	Bolt	Zinc Coated Steel	A 307 Grade B	1
088	Seat Nut	Brass	B 21	1
062	Disc Seat Ring	Bronze	B 62	1
061	Body Seat Ring	Bronze	B 62	1
023	Arm	Ductile Iron	A 536 Gr. 65-45-12	1
014	Cover	Cast Iron	A 126 Class B	1
003	Disc	Cast Iron	A 126 Class B	1
001	Body	Cast Iron	A 126 Class B	1

HYDRO SHELL	400	PSI.
HYDRO VALVE SEAT <td>200 <td>PSI.</td> </td>	200 <td>PSI.</td>	PSI.
HYDRO BACK SEAT <td>— <td>PSI.</td> </td>	— <td>PSI.</td>	PSI.
AIR SEAT <td>— <td>PSI.</td> </td>	— <td>PSI.</td>	PSI.
STEM <td>— <td>PSI.</td> </td>	— <td>PSI.</td>	PSI.
WORKING PRESSURE <td>200 <td>PSI.</td> </td>	200 <td>PSI.</td>	PSI.
TEST PRESSURE <td>200 <td>PSI.</td> </td>	200 <td>PSI.</td>	PSI.

HENRY PRATT - CCNE

401 S. HIGHLAND AVE. AURORA, IL 60506
 DR. JON COLPAN
 N.T.S.
 DATE 10/20/10
 USA1648C

SIZE 2" TO 12" SWING CHECK VALVE AMWA C508
 BRONZE BODY SEAT RING & BRONZE DISC SEAT RING
 WITH ONE LEVER AND SPRING

8001ABLS HP80004