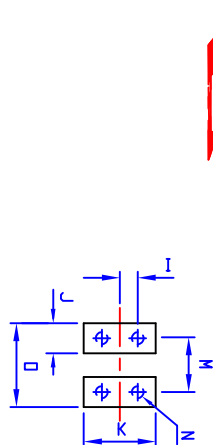
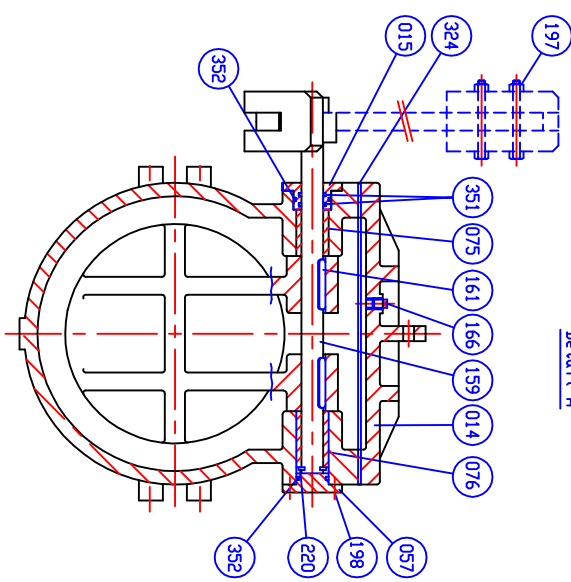
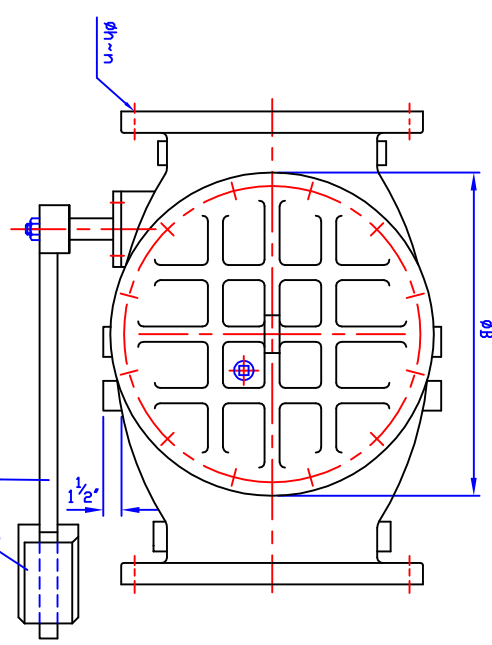


SUPPLIED WITH 8 MILS AMERLOCK 2 RED OXIDE EPOXY INTERIOR AND EXTERIOR OF THE VALVE

REFERENCE ONLY



Marking

SIZE (INCH)

SC1.

CONE

YEAR

150 CWP

Pouring DATE

AWMA C508
SERIES 8000

- Dimensions in inches

SIZE Ød in. mm.	L	ANSI B16.1 CL. 125				ØS	ØB	H	H1	I	J	K	M	N	Ø	
		ØD	ØC	Øh	n											T
14 (350)	31	21	18 3/4	1 1/8	12	1 3/8	1 3/4	22 3/16	19 5/16	12 1/16	1	2 1/8	4 1/2	4	3/4 x 10 (UNC)	6
16 (400)	36	23 1/2	21 1/4	1 1/8	16	1 7/16	2	24 1/8	21 1/2	13 1/4	1	2 1/8	4 1/2	4	3/4 x 10 (UNC)	6

CALLOUT	DESCRIPTION	MATERIAL	ASTM DESIGNATION	QTY
352	D-Ring C	Rubber (Buna N)	D 2000 BK 707	2
351	D-Ring B	Rubber (Buna N)	D 2000 BK 707	2
324	Cover Gasket	Rubber (Buna N)	D 2000 BK 807	1
220	Snop Ring	Stainless Steel	—	1
198	End Plate Bolt	Zinc Coated Steel	A 307 Grade B	1set
197	Weight Bolt	Zinc Coated Steel	A 307 Grade B	2
194	Cover Bolt & Nut	Zinc Coated Steel	A 307 Grade B	1set
188	Disc Seat Bolt	Stainless Steel	A 276 Type 304	1set
166	Plug Ø1"	Malleable Iron	A 47	1
161	Key	Stainless Steel	A 276 Type 304	2
159	Hinge Pin	Stainless Steel	A 276 Type 304	1
155	Weight Arm	Ductile Iron	A 536 Gr. 65-45-12	1
076	Bushing (B)	Bronze	B 62	1
075	Bushing (A)	Bronze	B 62	1
062	Disc Seat Ring	Rubber (Buna N)	D 2000 BK 807	1
061	Body Seat Ring	Bronze	B 62	1
057	End Plate (B)	Ductile Iron	A 536 Gr. 65-45-12	1
024	Seat Holder	Ductile Iron	A 536 Gr. 65-45-12	1
016	Weight	Cast Iron	A 126 Class B	1
015	End Plate (A)	Bronze	B 62	1
014	Cover	Cast Iron	A 126 Class B	1
003	Disc	Ductile Iron	A 536 Gr. 65-45-12	1
001	Body	Cast Iron	A 126 Class B	1

TEST	TEST PRESSURE
HYDRD SHELL	300 PSI.
HYDRD VALVE SEAT	150 PSI.
HYDRD BACK SEAT	— PSI.
AIR SEAT	— PSI.
STEAM	— PSI.
WORKING PRESSURE	150 PSI.

HENRY PRATT - CCNE

401 S. HIGHLAND AVE. AURORA, IL. 60506
 PHONE: 630.844.4000; FAX: 630.844.4124

SCALE: N.T.S. DR. JON COLPAN DATE 10/20/10 REF. DWG. USA1362D
 CHK. APP. E.C.N.

TITLE: SIZE 14" & 16" SWING CHECK VALVE AWMA C508
 BRONZE BODY SEAT RING & BUNA N DISC SEAT RING
 WITH ONE LEVER AND WEIGHT

TYPE: 8001AB1LW DWG NO. HP80005 REV.

DS01 ISSUED : 240640 REVISED: - USA1362C=>CHANGE THREAD UNC