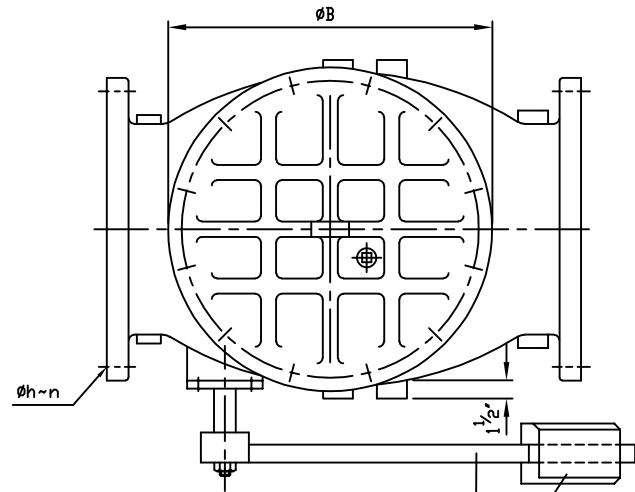
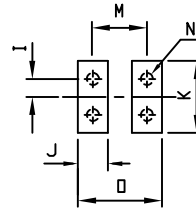


DSD1 ISSUED : 240640 REVISED: -

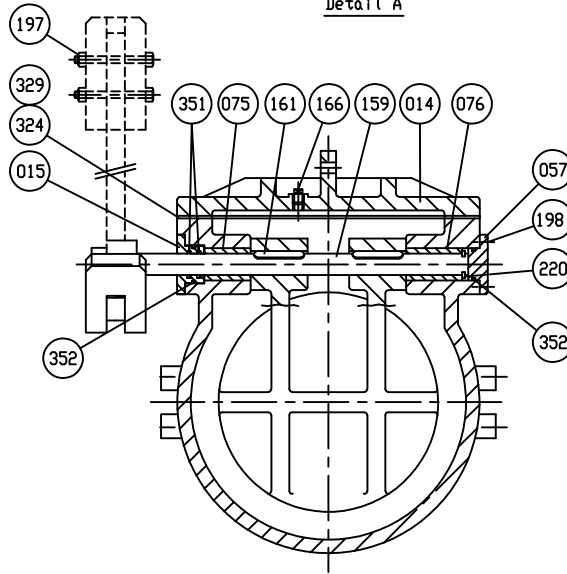


Marking

SIZE (INCH)
 CCNE SCI.
 150 CWP YEAR
 AWWA C508 POURING DATE
 SERIES 8000



Detail A



- Dimensions in inches

COVER BOLTS/NUTS		REFERENCE ONLY
TYPE	MATERIAL	
STANDARD	STEEL/ZINC	<input checked="" type="checkbox"/>
S1	304 STN. STEEL	
S3	316 STN. STEEL	

352	O-Ring C	Rubber (Buna N)	D 2000 BK 707	2
351	O-Ring B	Rubber (Buna N)	D 2000 BK 707	2
329	Cover O-Ring	Rubber (Buna N)	D 2000 BK 807	1
324	Cover Gasket	Rubber (Buna N)	D 2000 BK 807	1
220	Snap Ring	Stainless Steel	A 276 Type 420	1
198	End Plate Bolt	Zinc Coated Steel	A 307 Grade B	1set
197	Weight Bolt	Zinc Coated Steel	A 307 Grade B	2
194	Cover Bolt & Nut	See Table	See Table	1set
166	Plug $\phi 1''$	Stainless Steel	A 276 Type 304	1
161	Key	Stainless Steel	A 276 Type 304	2
159	Hinge Pin	Stainless Steel	A 276 Type 304	1
155	Weight Arm	Ductile Iron	A 536 Gr. 65-45-12	1
076	Bushing (B)	Bronze	B 62	1
075	Bushing (A)	Bronze	B 62	1
062	Disc Seat Ring	Bronze	B 62	1
061	Body Seat Ring	Bronze	B 62	1
057	End Plate (B)	Ductile Iron	A 536 Gr. 65-45-12	1
016	Weight	Cast Iron	A 126 Class B	1
015	End Plate (A)	Bronze	B 62	1
014	Cover	Cast Iron	A 126 Class B	1
003	Disc	Ductile Iron	A 536 Gr. 65-45-12	1
001	Body	Cast Iron	A 126 Class B	1
NO.	PARTS	MATERIAL	ASTM. DESIGNATION.	Q' TY

MATERIAL LIST

HYDRD	SHELL	300	PSI.
HYDRD	VALVE SEAT	150	PSI.
HYDRD	BACK SEAT	-	PSI.
AIR	SEAT	-	PSI.
STEAM		-	PSI.

TEST PRESSURE

WORKING PRESSURE	150	PSI.
------------------	-----	------



SCALE	DR.	DATE	REF. DWG.
N.T.S.	JON COLPAN	10/20/10	USA1394C
	CHK.	APP.	E.C.N.

TITLE
SIZE 14" & 16" SWING CHECK VALVE AWWA C508 BRONZE BODY SEAT RING & BRONZE DISC SEAT RING WITH ONE LEVER AND WEIGHT

TYPE:	DWG NO.	REV.
8001ABBLW	HP80006	4

SIZE ϕd in. mm.	L	ANSI B16.1 CL. 125					ϕS	ϕB	H	H1	I	J	K	M	N	\square
		ϕD	ϕC	ϕh	n	T										
14 (350)	31	21	18 ³ / ₄	1 ¹ / ₂	12	1 ³ / ₈	1 ³ / ₄	22 ³ / ₁₆	19 ⁵ / ₁₆	12 ¹ / ₁₆	1	2 ¹ / ₈	4 ¹ / ₂	4	3 ³ / ₄ x 10 v (UNC)	6
16 (400)	36	23 ¹ / ₂	21 ¹ / ₄	1 ¹ / ₂	16	1 ⁷ / ₁₆	2	24 ¹ / ₈	21 ¹ / ₂	13 ¹ / ₄	1	2 ¹ / ₈	4 ¹ / ₂	4	3 ³ / ₄ x 10 v (UNC)	6

REVISION 1, CHANGED ITEM 166 MTRL. TYPE FROM MALLEABLE IRON A47 TO, UJC, 03/08/11, ECR# 456

REVISION 2, ADDED ITEM 220 SNAP RING MATERIAL TYPE, UJC, 04/04/11, ECR# 491

REVISION 3, ADDED BOLTING TABLE TO DWG, AA, 05/13/13

REVISION 4, ADDED COVER O-RING TO MATERIAL TABLE AND REMOVED PAINT NOTE, AA, 11/28/17