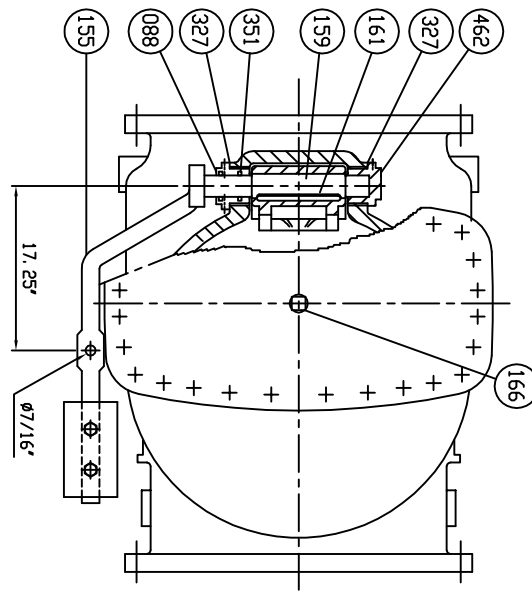


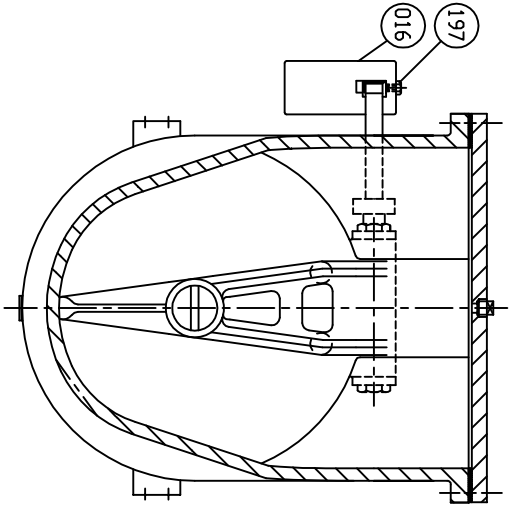
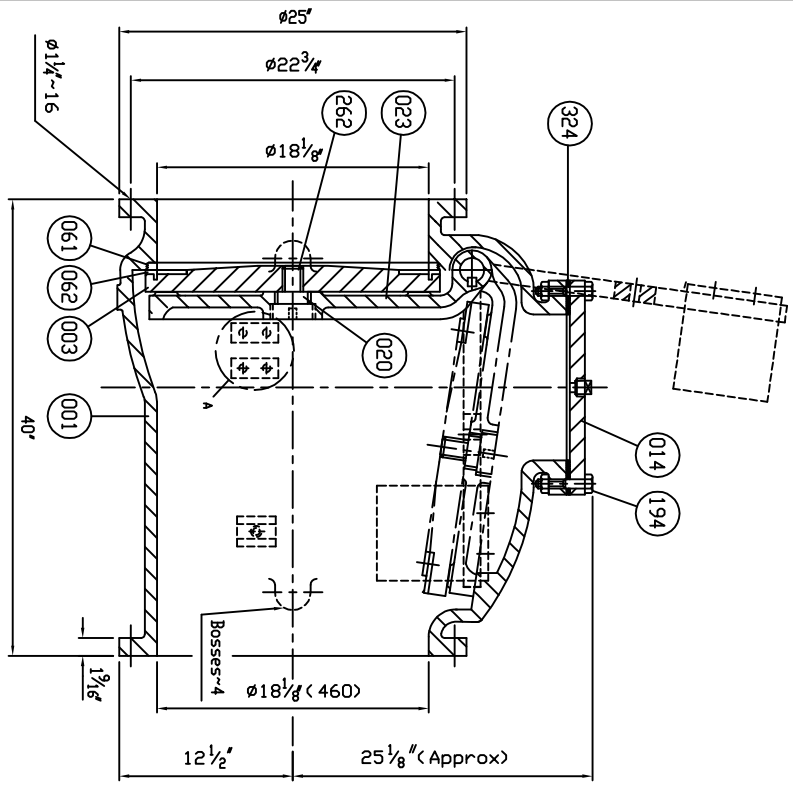
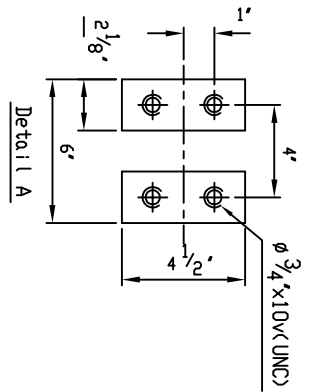
SUPPLIED WITH 8 MILS AMERLOCK 2 RED OXIDE EPOXY INTERIOR AND EXTERIOR OF THE VALVE

REFERENCE ONLY



Marking

- 18 CONE
- 150 PSI
- AWMA C508
- 20..
- CI
- CI
- SERIES 8000



Remark - Flanged dimensions follow ANSI B16.1 Cl. 125

CALLOUT	DESCRIPTION	MATERIAL	SIZE / SPECIFICATION	QTY
462	Retaining Plug	Brass	B 21	1
351	D-Ring	Rubber (Buna N)	D 2000 BK 707	2
327	Gasket	Rubber (Buna N)	D 2000 BK 807	2
324	Cover Gasket	Rubber (Buna N)	D 2000 BK 807	1
262	Disc Bolt	Stainless Steel	A 276 Type 304	1
197	Weight Bolt	Zinc Coated Steel	A 307 Grade B	2
194	Cover Bolt & Nut	Zinc Coated Steel	A 307 Grade B	1set
166	Plug ø1/2"	Malleable Iron	A 47	1
161	Key	Stainless Steel	A 276 Type 304	1
159	Hinge Pin	Stainless Steel	A 276 Type 304	1
155	Weight Arm	Ductile Iron	A 536 Gr. 65-45-12	1
088	Seat Nut	Brass	B 21	1
062	Disc Seat Ring	Bronze	B 62	1
061	Body Seat Ring	Bronze	B 62	1
016	Weight	Cast Iron	A 126 Class B	1
023	Arm	Ductile Iron	A 536 Gr. 65-45-12	1
020	Sleeve	Stainless Steel	A 276 Type 304	1
014	Cover	Cast Iron	A 126 Class B	1
003	Disc	Cast Iron	A 126 Class B	1
001	Body	Cast Iron	A 126 Class B	1

MATERIAL LIST

TEST PRESSURE	PSI.
HYDRD SHELL	300
HYDRD VALVE SEAT	150
HYDRD BACK SEAT	PSI.
AIR SEAT	PSI.
STEAM	PSI.

HENRY PRATT - CCNE

401 S. HIGHLAND AVE. AURORA, IL. 60506
 PHONE: 630.944.4000; FAX: 630.944.4124

DATE 10/20/10
 DR. JON COLPAN
 N.T.S. CHK. JWP. EGN. USA1258C

TYPE: 8001ABBLW
 DWG NO. HP80008
 REV. 1

SIZE 18" SWING CHECK VALVE AWMA C508
 BRONZE BODY SEAT RING & BRONZE DISC SEAT RING
 WITH ONE LEVER AND WEIGHT