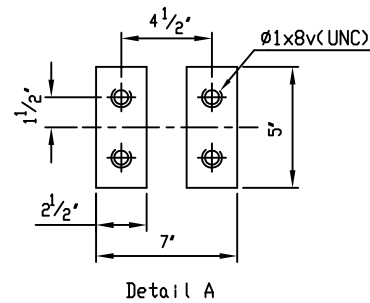


Marking

- 20 CCNE
- 150 PSI AWWA C508
- CI
- 200 CI
- SERIES 8000



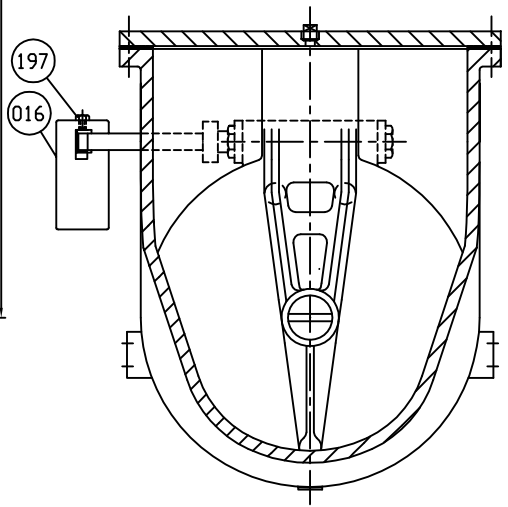
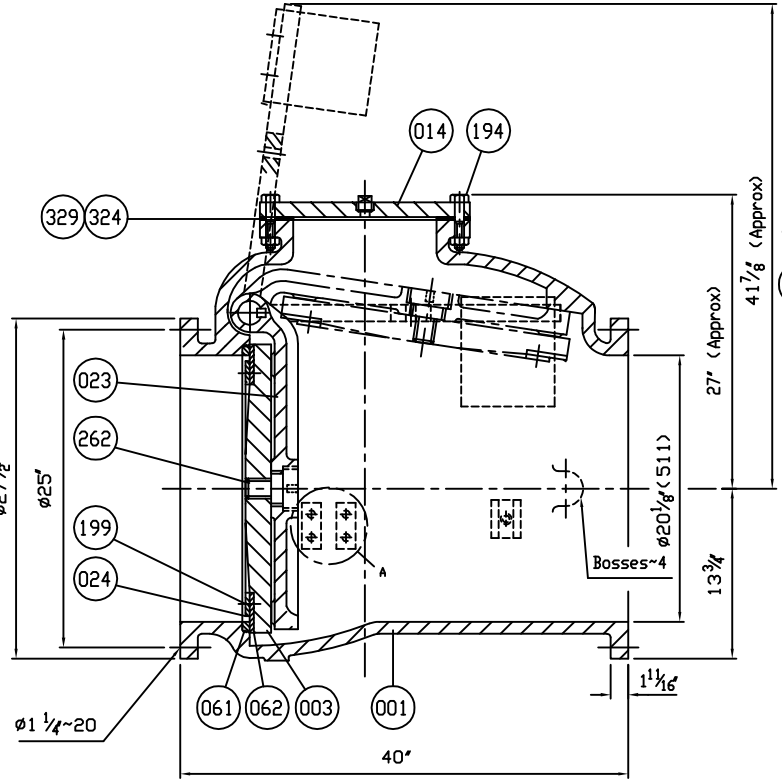
Remark - Flanged dimensions follow ANSI B16.1 CL. 125

NO.	PARTS	MATERIAL	ASTM DESIGNATION	Q'TY
462	Retaining Plug	Brass	B 21	1
351	O-Ring	Rubber (Buna N)	D 2000 BK 707	2
329	Cover O-Ring	Rubber (Buna N)	D 2000 BK 807	1
327	Gasket	Rubber (Buna N)	D 2000 BK 807	2
324	Cover Gasket	Rubber (Buna N)	D 2000 BK 807	1
262	Disc Bolt	Stainless Steel	A 276 Type 304	1
199	Seat Holder Bolt	Stainless Steel	A 276 Type 304	1 set
197	Weight Bolt	Zinc Coated Steel	A 307 Grade B	2
194	Cover Bolt & Nut	Zinc Coated Steel	A 307 Grade B	1 set
166	Plug 1/2"	Stainless Steel	A 276 Type 304	1
161	Key	Stainless Steel	A 276 Type 304	1
159	Hinge Pin	Stainless Steel	A 276 Type 304	1
155	Weight Arm	Ductile Iron	A 536 Gr. 65-45-12	1
088	Seat Nut	Brass	B 21	1
062	Disc Seat Ring	Rubber (Buna N)	D 2000 BK 807	1
061	Body Seat Ring	Bronze	B 62	1
024	Seat Holder	Ductile Iron	A 536 Gr. 65-45-12	1
016	Weight	Cast Iron	A 126 Class B	1
023	Arm	Ductile Iron	A 536 Gr. 65-45-12	1
014	Cover	Cast Iron	A 126 Class B	1
003	Disc	Cast Iron	A 126 Class B	1
001	Body	Cast Iron	A 126 Class B	1

MATERIAL LIST			
HYDRO SHELL		300	PSI.
HYDRO VALVE SEAT		150	PSI.
HYDRO BACK SEAT		—	PSI.
AIR SEAT		—	PSI.
STEAM		—	PSI.
TEST PRESSURE			
WORKING PRESSURE		150	PSI.

PRATT

SCALE N.T.S.	DR. JON COLPAN CHK.	DATE 10/20/10 APP.	REF. DWG. E.C.N.	USA1324B
TITLE SIZE 20" SWING CHECK VALVE AWWA C508 BRONZE BODY SEAT RING & BUNA N DISC SEAT RING WITH ONE LEVER AND WEIGHT				
TYPE: 8001AB1LW	DWG NO. HP80009		REV. 2	



DS01 ISSUED : 240640 REVISED - USA1128D - MASTER MILLIKEN/CHANG FI., TYPE