

Remark - Flanged dimensions follow ANSI B16.1 CL. 125

462	Retaining Plug	Brass	B 21	1
351	O-Ring	Rubber (Buna N)	D 2000 BK 707	2
329	Cover O-Ring	Rubber (Buna N)	D 2000 BK 807	1
327	Gasket	Rubber (Buna N)	D 2000 BK 807	2
324	Cover Gasket	Rubber (Buna N)	D 2000 BK 807	1
262	Disc Bolt	Stainless Steel	A 276 Type 304	1
197	Weight Bolt	Zinc Coated Steel	A 307 Grade B	2
194	Cover Bolt & Nut	Stainless Steel	A 276 Type 316	1set
166	Plug $\phi 1/2"$	Stainless Steel	A 276 Type 304	1
161	Key	Stainless Steel	A 276 Type 304	1
159	Hinge Pin	Stainless Steel	A 276 Type 304	1
155	Weight Arm	Ductile Iron	A 536 Gr. 65-45-12	1
088	Seat Nut	Brass	B 21	1
062	Disc Seat Ring	Bronze	B 62	1
061	Body Seat Ring	Bronze	B 62	1
020	Sleeve	Stainless Steel	A 276 Type 304	1
016	Weight	Cast Iron	A 126 Class B	1
023	Arm	Ductile Iron	A 536 Gr. 65-45-12	1
014	Cover	Cast Iron	A 126 Class B	1
003	Disc	Cast Iron	A 126 Class B	1
001	Body	Cast Iron	A 126 Class B	1
NO.	PARTS	MATERIAL	ASTM. DESIGNATION	Q' TY

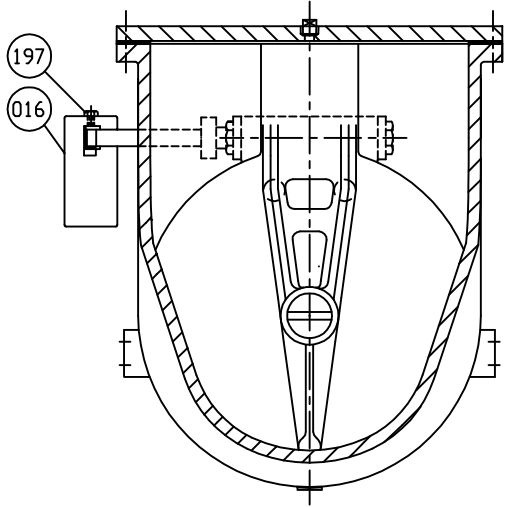
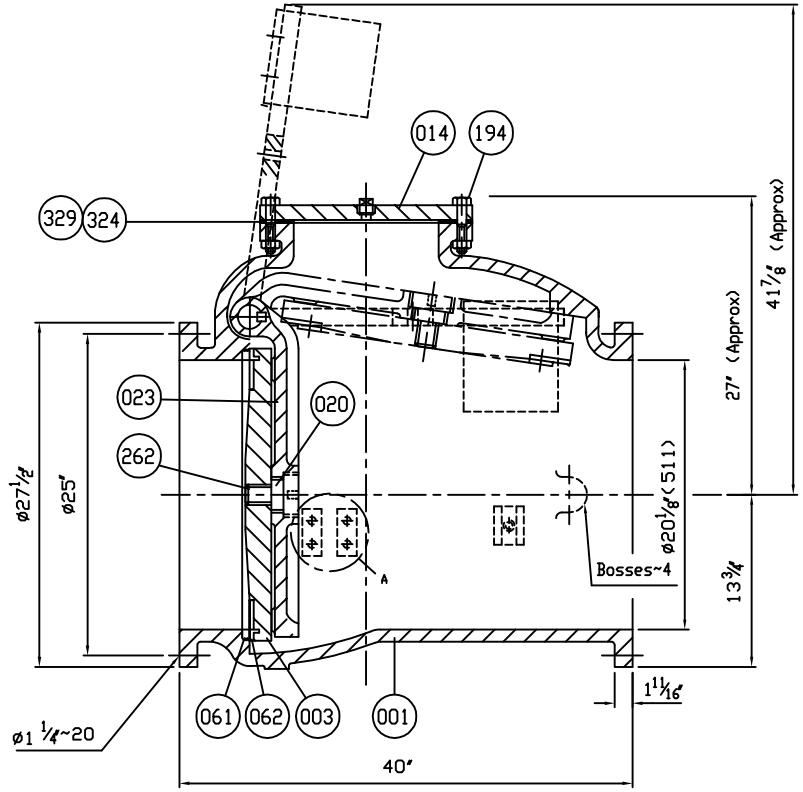
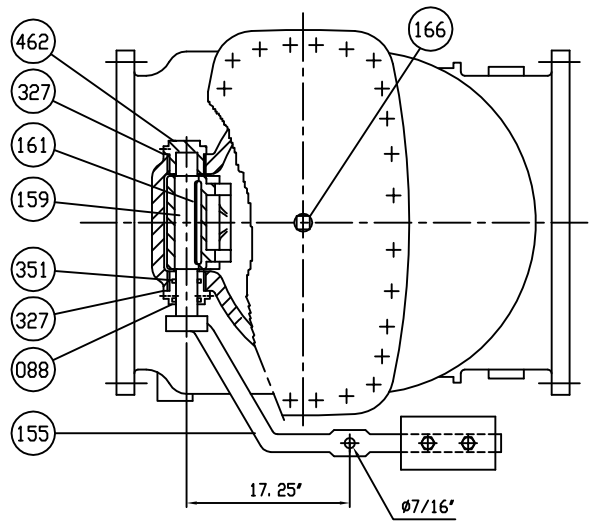
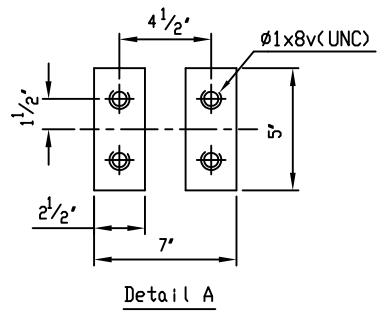
MATERIAL LIST	
HYDRD SHELL	300 PSI.
HYDRD VALVE SEAT	150 PSI.
HYDRD BACK SEAT	— PSI.
AIR SEAT	— PSI.
STEAM	— PSI.
TEST PRESSURE	
WORKING PRESSURE	150 PSI.

PRATT

SCALE N.T.S.	DR. JON COLPAN CHK. APP.	DATE 10/20/10 E.C.N.	REF. DWG. USA1433C
TITLE SIZE 20" SWING CHECK VALVE AWWA C508 BRONZE BODY SEAT RING & BRONZE DISC SEAT RING WITH ONE LEVER AND WEIGHT			
TYPE: 8001ABBLW	DWG NO. HP80010	REV. 2	

Marking

- 20
- CCNE 20__
- 150 PSI CI
- AWWA C508 SERIES 8000
- CI



DS01 ISSUED : 240640 REVISED -