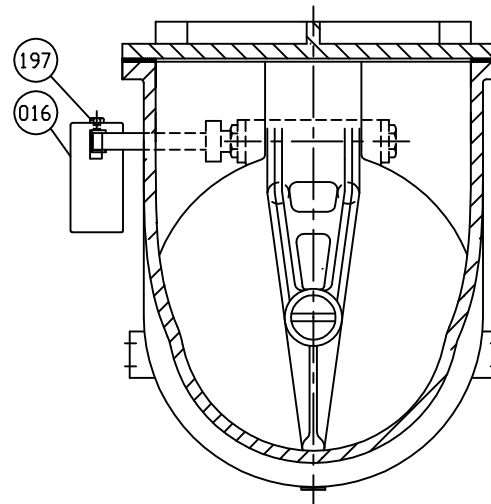
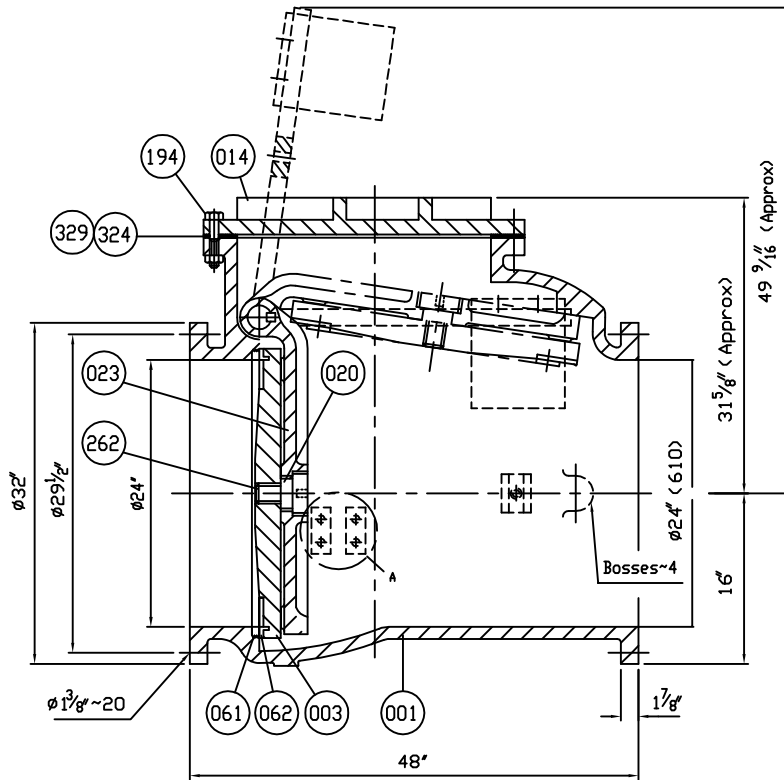
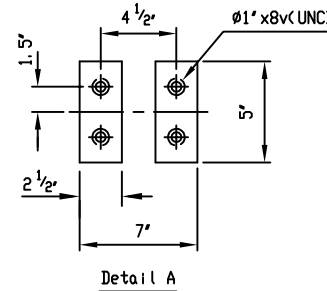


COVER BOLTS/NUTS		
TYPE	MATERIAL	✓
STANDARD	STEEL/ZINC	
S1	304 STN. STEEL	
S3	316 STN. STEEL	

Marking

24
CCNE
150 PSI
AWWA C508
CI
20
CI
SERIES 8000



Remark - Flanged dimensions follow ANSI. B16.1 CL. 125

NO.	PARTS	MATERIAL	ASTM. DESIGNATION	Q'TY
462	Retaining Plug	Brass	B 21	1
351	O-Ring	Rubber (Buna N)	D 2000 BK 707	2
329	Cover O-Ring	Rubber (Buna N)	D 2000 BK 807	1
327	Gasket	Rubber (Buna N)	D 2000 BK 807	2
324	Cover Gasket	Rubber (Buna N)	D 2000 BK 807	1
262	Disc Bolt	Stainless Steel	A 276 Type 304	1
197	Weight Bolt	Zinc Coated Steel	A 307 Grade B	2
194	Cover Bolt & Nut	Stainless Steel	A 276 Type 316	1 ^{set}
166	Plug Ø1/2"	Stainless Steel	A 276 Type 304	1
161	Key	Stainless Steel	A 276 Type 304	1
159	Hinge Pin	Stainless Steel	A 276 Type 304	1
155	Weight Arm	Ductile Iron	A 536 Gr. 65-45-12	1
088	Seat Nut	Brass	B 21	1
062	Disc Seat Ring	Bronze	B 62	1
061	Body Seat Ring	Bronze	B 62	1
016	Weight	Cast Iron	A 126 Class B	1
023	Arm	Ductile Iron	A 536 Gr. 65-45-12	1
020	Sleeve	Stainless Steel	A 276 Type 304	1
014	Cover	Cast Iron	A 126 Class B	1
003	Disc	Cast Iron	A 126 Class B	1
001	Body	Cast Iron	A 126 Class B	1

MATERIAL LIST			
HYDRO SHELL		300	PSI.
HYDRO VALVE SEAT		150	PSI.
HYDRO BACK SEAT		—	PSI.
AIR SEAT		—	PSI.
STEAM		—	PSI.
TEST PRESSURE			
WORKING PRESSURE		150	PSI.

PRATT

SCALE N.T.S.	DR. JON COLPAN	DATE 10/20/10	REF. DWG. USA1260D
TITLE SIZE 24" SWING CHECK VALVE AWWA C508 BRONZE BODY SEAT RING & BRONZE DISC SEAT RING WITH ONE LEVER AND WEIGHT			
TYPE: 8001ABBLW	DWG NO. HP80012	REV. 3	

DS01 ISSUED - 240640 REVISED -