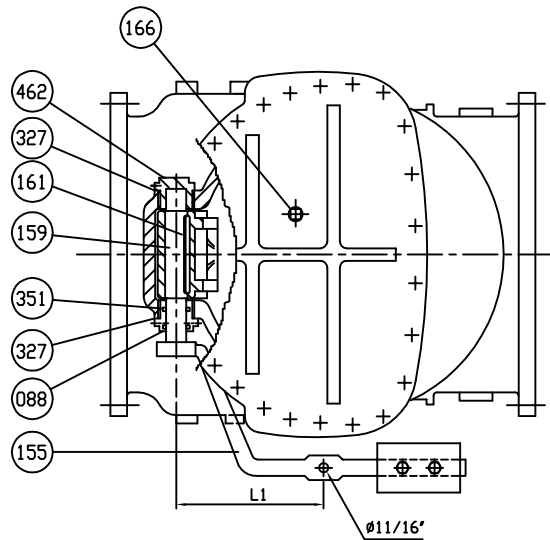


DS01 ISSUED : 240640 REVISED: -USA1326B->ADD THREAD UNC



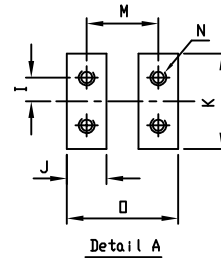
Marking

SIZE (INCH)
CCNE
150 PSI
AWWA C508
CI

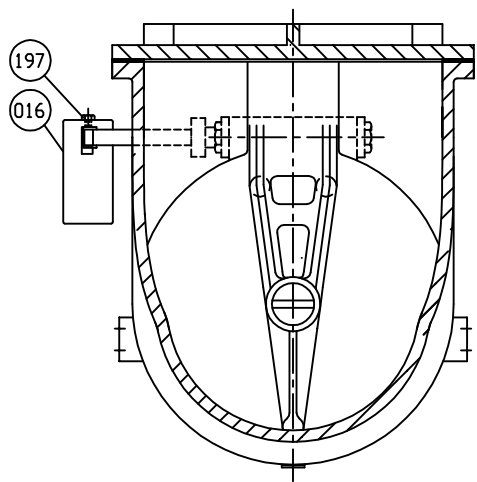
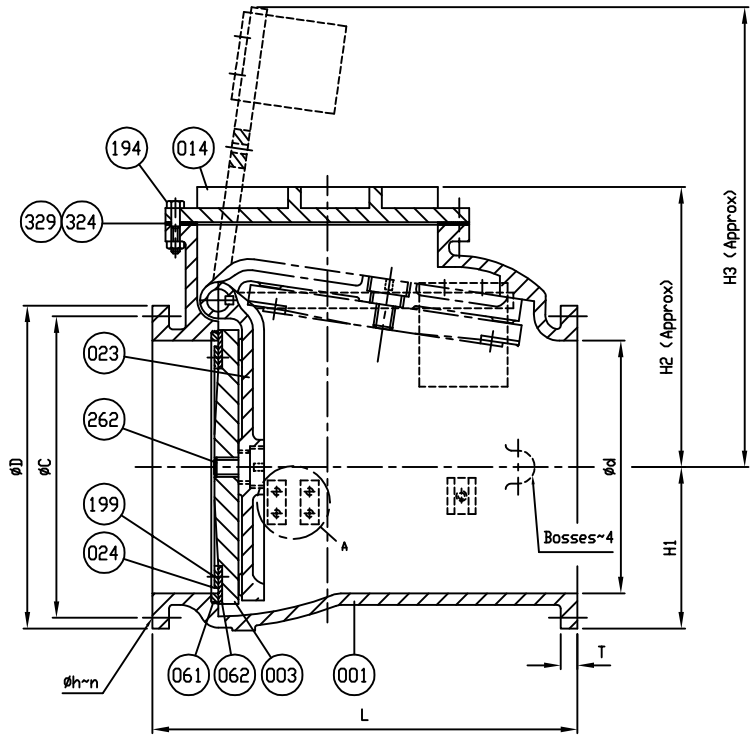
⊕
200_
CI
SERIES 8000

➔

SIZE ød	L	ANSI B16.1 CL. 125					H1	H2	H3	L1	I	J	K	M	N	O
		øD	øC	øh	n	T										
30	52½	38¾	36	1⅜	28	2⅛	19⅜	36⅜	62⅝	27¾	2½	3⅛	7½	5½	⅝x11v(UNC)	8⅛
36	60½	46	42¾	1⅝	32	2⅜	23	40	65⅝	17½	2½	3⅛	7½	5½	⅝x11v(UNC)	8⅛



462	Retaining Plug	Brass	B 21	1
351	O-Ring	Rubber (Buna N)	D 2000 BK 707	2
324	Cover O-Ring	Rubber (Buna N)	D 2000 BK 807	1
327	Gasket	Rubber (Buna N)	D 2000 BK 807	2
324	Cover Gasket	Rubber (Buna N)	D 2000 BK 807	1
262	Disc Bolt	Stainless Steel	A 276 Type 304	1
199	Seat Holder Bolt	Stainless Steel	A 276 Type 304	1set
197	Weight Bolt	Zinc Coated Steel	A 307 Grade B	2
194	Cover Bolt & Nut	Zinc Coated Steel	A 307 Grade B	1set
166	Plug ø1/2"	Stainless Steel	A 276 Type 304	1
161	Key	Stainless Steel	A 276 Type 304	1
159	Hinge Pin	Stainless Steel	A 276 Type 304	1
155	Weight Arm	Ductile Iron	A 536 Gr. 65-45-12	1
088	Seat Nut	Brass	B 21	1
062	Disc Seat Ring	Rubber (Buna N)	D 2000 BK 807	1
061	Body Seat Ring	Bronze	B 62	1
024	Seat Holder	Ductile Iron	A 536 Gr. 65-45-12	1
016	Weight	Cast Iron	A 126 Class B	1
023	Arm	Ductile Iron	A 536 Gr. 65-45-12	1
014	Cover	Cast Iron	A 126 Class B	1
003	Disc	Cast Iron	A 126 Class B	1
001	Body	Cast Iron	A 126 Class B	1



MATERIAL LIST			
HYDRO SHELL		300	PSI.
HYDRO VALVE SEAT		150	PSI.
HYDRO BACK SEAT		—	PSI.
AIR SEAT		—	PSI.
STEAM		—	PSI.
TEST PRESSURE			
WORKING PRESSURE		150	PSI.

PRATT			
SCALE N.T.S.	DR. JON COLPAN CHK.	DATE 10/20/10 APP.	REF. DWG. USA1326C
TITLE SIZE 30" AND 36" SWING CHECK VALVE AWWA C508 BRONZE BODY SEAT RING & BUNA N DISC SEAT RING WITH ONE LEVER AND WEIGHT			
TYPE: 8001AB1LW	DWG NO. HP80013	REV. 1	

REVISION 1, CHANGED ITEM 166 MTRL. TYPE FROM MALLEABLE IRON A47 TO, UJC, 03/08/11, ECR# 456

REVISION 2, ADDED COVER O-RING TO MATERIAL TABLE AND REMOVED PAINT NOTE, AA, 11/28/17