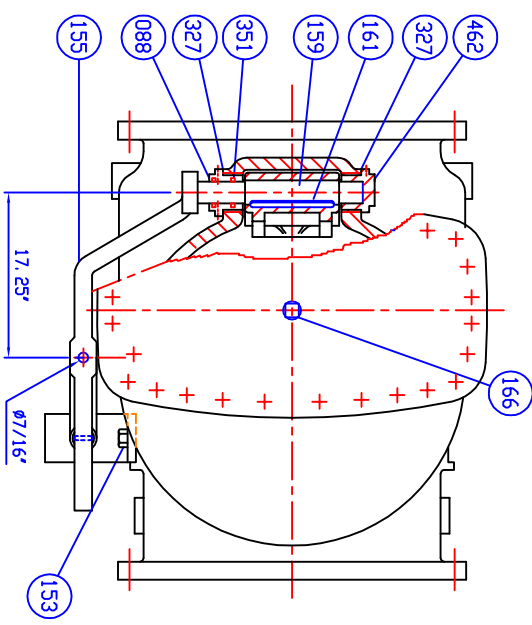


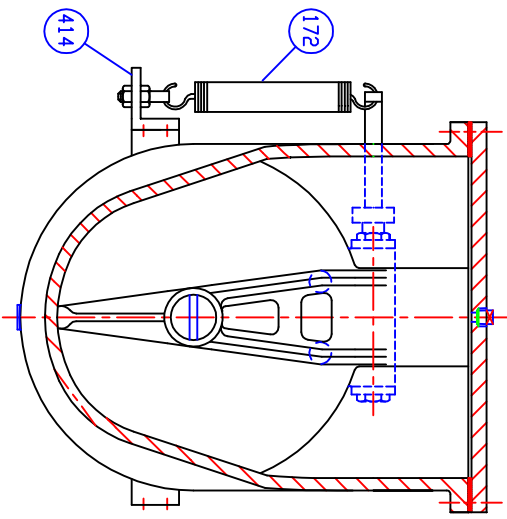
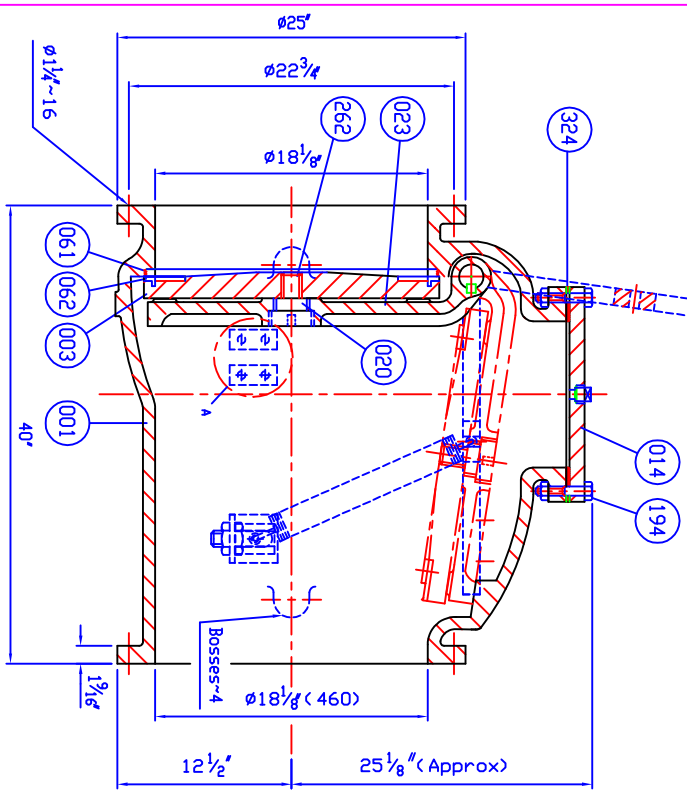
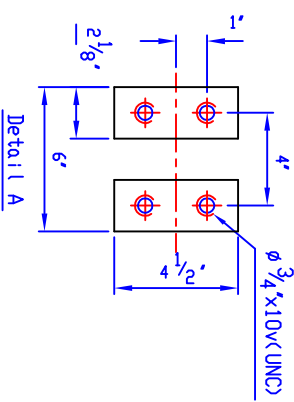
SUPPLIED WITH 8 MILS AMERLOCK 2 RED OXIDE EPOXY INTERIOR AND EXTERIOR OF THE VALVE

REFERENCE ONLY



Marking

- 18
- CCNE
- 150 PSI
- AWMA C508
- SERIES 8000



Remark - Flanged dimensions follow ANSI B16.1 Cl. 125

CALLOUT	DESCRIPTION	MATERIAL	SIZE / GRADE	QTY
462	Retaining Plug	Brass	B 21	1
414	Arm B	Zinc Coated Steel	A 36	1set
351	D-Ring	Rubber (Buna N)	D 2000 BK 707	2
327	Gasket	Rubber (Buna N)	D 2000 BK 807	2
324	Cover Gasket	Rubber (Buna N)	D 2000 BK 807	1
262	Disc Bolt	Stainless Steel	A 276 Type 304	1
194	Cover Bolt & Nut	Zinc Coated Steel	A 307 Grade B	1set
172	Spring	Zinc Coated Steel	A 36	1
166	Plug 01/2"	Malleable Iron	A 47	1
161	Key	Stainless Steel	A 276 Type 304	1
159	Hinge Pin	Stainless Steel	A 276 Type 304	1
155	Weight Arm	Ductile Iron	A 536 Gr. 65-45-12	1
153	Bolt	Zinc Coated Steel	A 307 Grade B	2
088	Seat Nut	Brass	B 21	1
062	Disc Seat Ring	Bronze	B 62	1
061	Body Seat Ring	Bronze	B 62	1
023	Arm	Ductile Iron	A 536 Gr. 65-45-12	1
020	Sleeve	Stainless Steel	A 276 Type 304	1
014	Cover	Cast Iron	A 126 Class B	1
003	Disc	Cast Iron	A 126 Class B	1
001	Body	Cast Iron	A 126 Class B	1

TEST PRESSURE	WORKING PRESSURE
300 PSI	150 PSI
150 PSI	150 PSI
PSI	PSI
PSI	PSI
PSI	PSI

**HENRY PRATT - CCNE**

401 S. HIGHLAND AVE. AURORA, IL. 60506  
 PHONE: 630.844.4000, FAX: 630.844.4124

DATE: 10/28/10  
 CHK: JON COLPAN  
 APP: [Signature]  
 EGM: USA1258C

TYPE: N.T.S.  
 TITLE: SIZE 18" SWING CHECK VALVE AWMA C508  
 BRONZE BODY SEAT RING & BRONZE DISC SEAT RING  
 WITH ONE LEVER AND SPRING

DWG NO. 8001ABBL5  
 HP80014