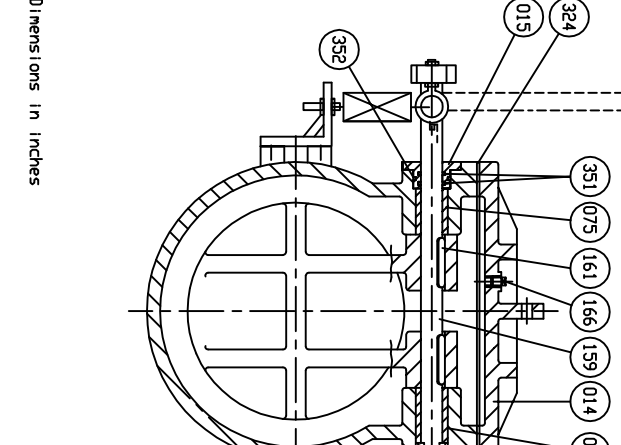
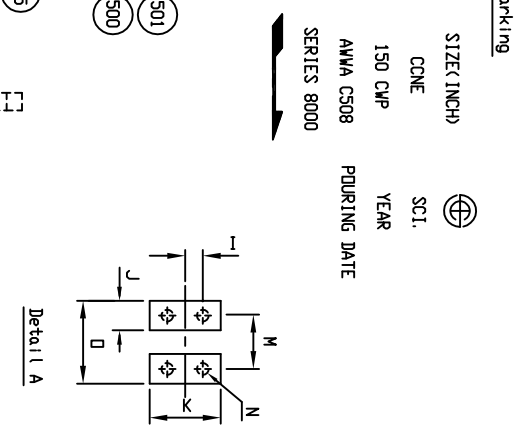
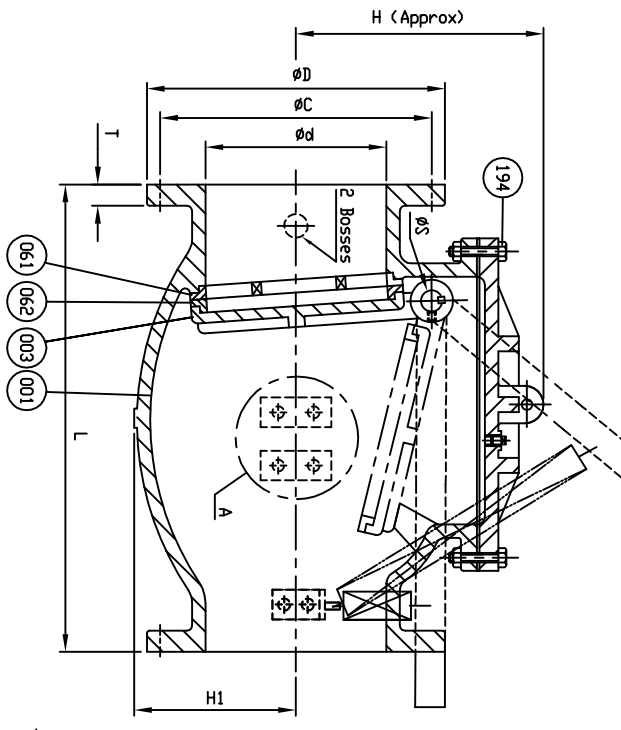
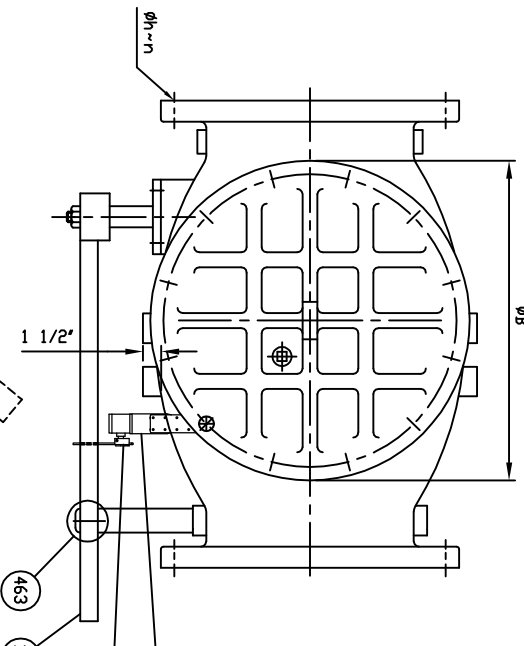


SUPPLIED WITH 8 MILS AMERLOCK 2 RED OXIDE EPOXY INTERIOR AND EXTERIOR OF THE VALVE

REFERENCE ONLY



- Dimensions in inches

SIZE Ød in. mm.	L	ANSI B16.1 CL.125				ØS	ØB	H	H1	I	J	K	M	N	D	
		ØD	ØC	Øh	n											T
14 (350)	31	21	18 3/4	1 1/8	12	1 3/8	1 3/4	22 3/16	19 3/16	12 1/16	1	2 1/8	4 1/2	4	3/4 x 10 x UNC	6
16 (400)	36	23 1/2	21 1/4	1 1/8	16	1 7/16	2	24 1/8	21 1/2	13 1/4	1	2 1/8	4 1/2	4	3/4 x 10 x UNC	6

NO.	PARTS	MATERIAL	LIST	ASTM DESIGNATION	Q'TY
501	Limit Switch Mounting Bracket	Zinc Coated Steel			1
500	Limit Switch				1
463	Spring Kit	Steel/Stainless Steel			1set
352	D-Ring C	Rubber (Buna N)	D 2000 BK 707		2
351	D-Ring B	Rubber (Buna N)	D 2000 BK 707		2
324	Cover Gasket	Rubber (Buna N)	D 2000 BK 807		1
220	Snap Ring	Stainless Steel	A 276 Type 420		1
198	End Plate Bolt	Zinc Coated Steel	A 307 Grade B		1set
194	Cover Bolt & Nut	Zinc Coated Steel	A 307 Grade B		1set
166	Plug Ø1"	Stainless Steel	A 276 Type 304		1
161	Key	Stainless Steel	A 276 Type 304		2
159	Hinge Pin	Stainless Steel	A 276 Type 304		1
076	Bushing (B)	Ductile Iron	A 536 Gr. 65-45-12		1
075	Bushing (A)	Bronze	B 62		1
062	Disc Seat Ring	Bronze	B 62		1
061	Body Seat Ring	Bronze	B 62		1
057	End Plate (B)	Ductile Iron	A 536 Gr. 65-45-12		1
015	End Plate (A)	Bronze	B 62		1
014	Cover	Cast Iron	A 126 Class B		1
003	Disc	Ductile Iron	A 536 Gr. 65-45-12		1
001	Body	Cast Iron	A 126 Class B		1

TEST PRESSURE	PSI.
WORKING PRESSURE	150
HYDRO VALVE SEAT	150
HYDRO BACK SEAT	—
AIR SEAT	—
STEAM	—

HENRY PRATT - CCNE

401 S. HIGHLAND AVE. AURORA, IL 60506
 PHONE: 630.844.4000; FAX: 630.844.4124
 DR. R. RACKAWACK DATE 10/20/10
 CHK. DATE 10/20/10
 APP. E.C.N. USA1394C
 TITLE: SIZE 14" & 16" SWING CHECK VALVE AWMA C508
 BRONZE BODY SEAT RING & BRONZE DISC SEAT RING
 WITH ONE LEVER AND SPRING AND LIMITSWITCH
 TYPE: 8001ABBLSLN4D DWG NO. HP80015 REV. 2