
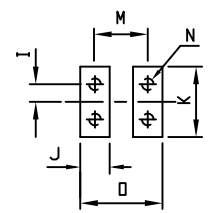
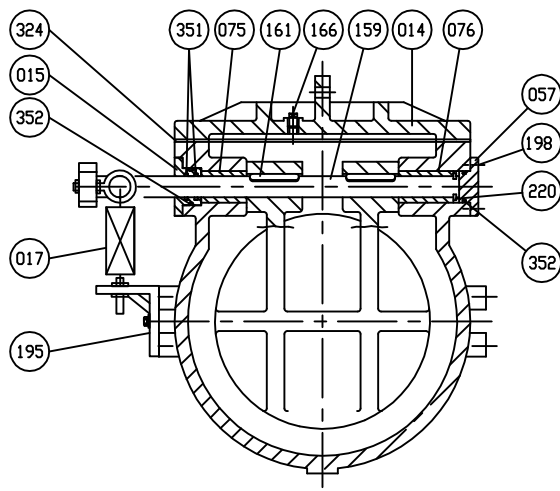
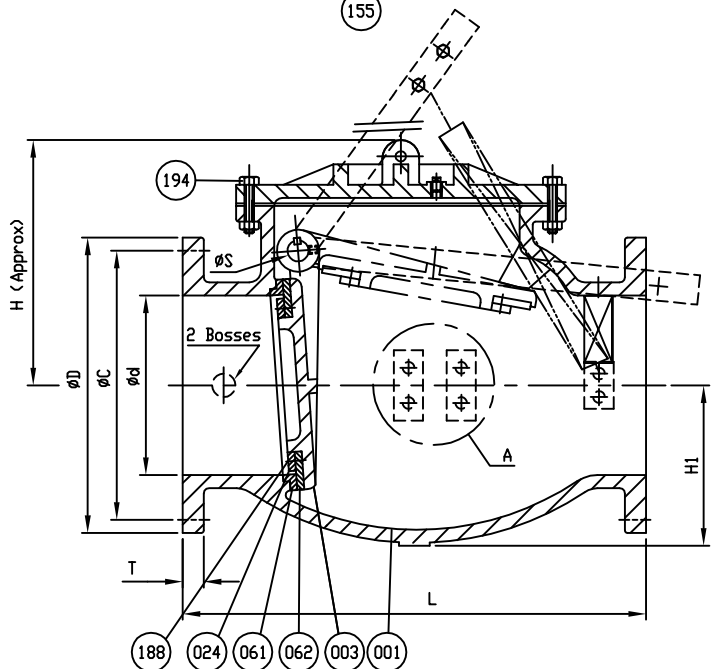


Marking

SIZE (INCH)   
 CCNE SCI.  
 150 CWP YEAR  
 AWWA C508 POURING DATE  
 SERIES 8000



Detail A



- Dimensions in inches

| 463 | Spring Hardware Kit | Stainless Steel   | A 276 Type 304     | 1set |
|-----|---------------------|-------------------|--------------------|------|
| 352 | O-Ring C            | Rubber (Buna N)   | D 2000 BK 707      | 2    |
| 351 | O-Ring B            | Rubber (Buna N)   | D 2000 BK 707      | 2    |
| 324 | Cover Gasket        | Rubber (Buna N)   | D 2000 BK 807      | 1    |
| 220 | Snap Ring           | Stainless Steel   | A 276 Type 420     | 1    |
| 198 | End Plate Bolt      | Zinc Coated Steel | A 307 Grade B      | 1set |
| 195 | Spring Bracket      | Stainless Steel   | A 276 Type 304     | 1    |
| 194 | Cover Bolt & Nut    | Zinc Coated Steel | A 307 Grade B      | 1set |
| 188 | Disc Seat Bolt      | Stainless Steel   | A 276 Type 304     | 1set |
| 172 | Spring              | Spring Steel      | Stainless Steel    | 1    |
| 166 | Plug Ø1'            | Stainless Steel   | A 276 Type 304     | 1    |
| 161 | Key                 | Stainless Steel   | A 276 Type 304     | 2    |
| 159 | Hinge Pin           | Stainless Steel   | A 276 Type 304     | 1    |
| 155 | Spring Arm          | Ductile Iron      | A 536 Gr. 65-45-12 | 1    |
| 076 | Bushing (B)         | Bronze            | B 62               | 1    |
| 075 | Bushing (A)         | Bronze            | B 62               | 1    |
| 062 | Disc Seat Ring      | Rubber (Buna N)   | D 2000 BK 807      | 1    |
| 061 | Body Seat Ring      | Bronze            | B 62               | 1    |
| 057 | End Plate (B)       | Ductile Iron      | A 536 Gr. 65-45-12 | 1    |
| 024 | Seat Holder         | Ductile Iron      | A 536 Gr. 65-45-12 | 1    |
| 015 | End Plate (A)       | Bronze            | B 62               | 1    |
| 014 | Cover               | Cast Iron         | A 126 Class B      | 1    |
| 003 | Disc                | Ductile Iron      | A 536 Gr. 65-45-12 | 1    |
| 001 | Body                | Cast Iron         | A 126 Class B      | 1    |
| NO. | PARTS               | MATERIAL          | ASTM. DESIGNATION. | Q'TY |

MATERIAL LIST

| HYDRD SHELL      | 300 | PSI. |
|------------------|-----|------|
| HYDRD VALVE SEAT | 150 | PSI. |
| HYDRD BACK SEAT  | —   | PSI. |
| AIR SEAT         | —   | PSI. |
| STEAM            | —   | PSI. |
| TEST PRESSURE    |     |      |
| WORKING PRESSURE | 150 | PSI. |



|          |                |               |           |
|----------|----------------|---------------|-----------|
| SCALE    | DR. JON COLPAN | DATE 02/22/11 | REF. DWG. |
| N.T.S.   | CHK.           | APP.          | E.C.N.    |
| USA1362D |                |               |           |

TITLE  
 SIZE 14" & 16" SWING CHECK VALVE AWWA C508  
 BRONZE BODY SEAT RING & BUNA N DISC SEAT RING  
 WITH ONE LEVER AND SPRING

|       |           |         |         |      |   |
|-------|-----------|---------|---------|------|---|
| TYPE: | 8001AB1LS | DWG NO. | HP80022 | REV. | 4 |
|-------|-----------|---------|---------|------|---|

| SIZE<br>Ød<br>in. mm. | L  | ANSI B16.1 CL. 125 |        |       |    |        | ØS    | ØB      | H       | H1      | I | J     | K     | M | N            | Ø |
|-----------------------|----|--------------------|--------|-------|----|--------|-------|---------|---------|---------|---|-------|-------|---|--------------|---|
|                       |    | ØD                 | ØC     | Øh    | n  | T      |       |         |         |         |   |       |       |   |              |   |
| 14 (350)              | 31 | 21                 | 18 3/4 | 1 1/8 | 12 | 1 3/8  | 1 3/4 | 22 3/16 | 19 5/16 | 12 1/16 | 1 | 2 1/8 | 4 1/2 | 4 | 3/4x10v<UNC> | 6 |
| 16 (400)              | 36 | 23 1/2             | 21 1/4 | 1 1/8 | 16 | 1 7/16 | 2     | 24 1/8  | 21 1/2  | 13 1/4  | 1 | 2 1/8 | 4 1/2 | 4 | 3/4x10v<UNC> | 6 |

REVISION 1, CHANGED ITEM 166 MTRL. TYPE FROM MALLEABLE IRON A47 TO, JC, 03/08/11, ECR# 456  
 REVISION 2, ADDED ITEM 220 SNAP RING MATERIAL TYPE, JC, 04/04/11, ECR# 491  
 REVISION 3, MUELLER PART NUMBER CHANGED FROM A2602-6B1LS TO 8001AB1LS, JC, 03/24/15, PER LARRY AULICH

REVISION 4, ADDED COVER O-RING TO MATERIAL TABLE AND REMOVED PAINT NOTE, AA, 11/28/17

ISSUED : 240640 REVISED: - USA1362C=>CHANGE THREAD UNC

DS01