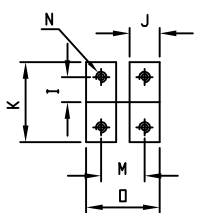
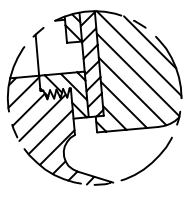
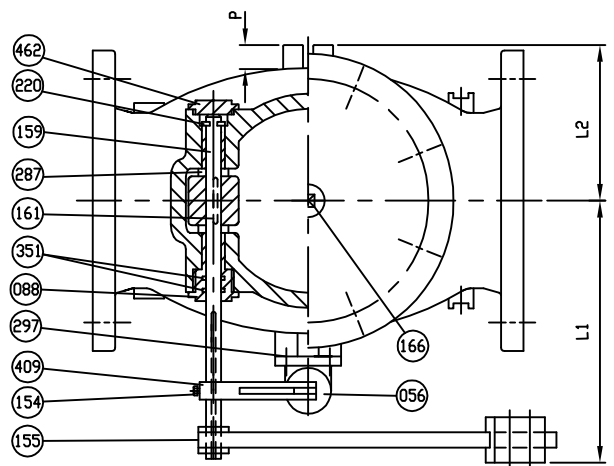
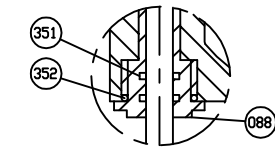
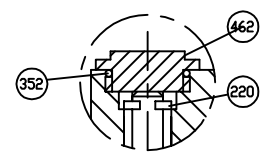


REFERENCE ONLY

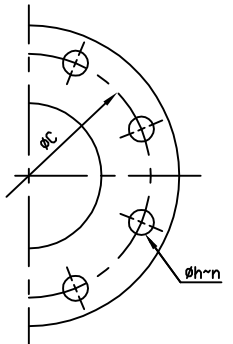
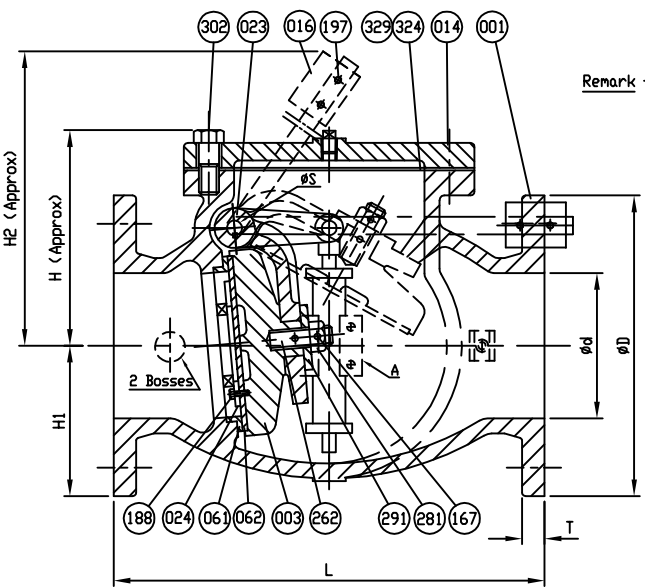


MARKING  
 SIZE (INCH)  
 CCNE  
 350 CWP  
 AWWA C508  
 DI  
 SERIES 8500

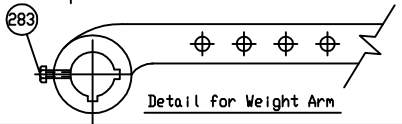
SCI  
 YEAR  
 POURING DATE



Remark - Part No. 024 (Seat Holder)  
 - size 3'-6' => Cast Iron  
 - size 8'-12' => Ductile Iron



VALVE SIZE	PLUG SIZE
3	1/2
4	1/2
6	3/4
8	3/4
10	1
12	1



Dimensions in inches

SIZE in. mm.	L	ANSI B16.1 CL. 125						$\phi S$	H	H1	H2	I	J	K	L1	L2	M	N	O	P
		$\phi D$	$\phi C$	$\phi h$	n	T														
3 (80)	9 1/2	7 1/2	6	3/4	4	3/4	1/2	6 1/16	3 3/4	9 1/4	3/4	1 1/2	3	10 5/8	4 1/16	2 1/2	1/2 x 13v (UNC)	4	3/4	
4 (100)	11 1/2	9	7 1/2	3/4	8	15/16	1/2	6 5/8	4 1/2	11 13/16	3/4	1 1/2	3	11 1/8	4 15/16	2 1/2	1/2 x 13v (UNC)	4	3/4	
6 (150)	14	11	9 1/2	7/8	8	1	3/4	8 1/2	5 1/2	14 3/8	3/4	1 1/2	3	13 3/16	5 15/16	2 1/2	1/2 x 13v (UNC)	4	3/4	
8 (200)	19 1/2	13 1/2	11 3/4	7/8	8	1 1/8	7/8	9 15/16	6 3/4	17 3/8	7/8	1 3/4	3 1/2	16 1/16	8 1/16	3 1/4	5/8 x 11v (UNC)	5	1 1/4	
10 (250)	24 1/2	16	14 1/4	1	12	1 3/16	1	11 3/16	8	21 1/2	7/8	1 3/4	3 1/2	19 1/8	9 3/16	3 1/4	5/8 x 11v (UNC)	5	1 1/4	
12 (300)	27 1/2	19	17	1	12	1 1/4	1 1/8	13 3/16	9 1/2	24 1/16	7/8	1 3/4	3 1/2	21	10 13/16	3 1/4	5/8 x 11v (UNC)	5	1 1/4	

NO.	PARTS	MATERIAL	ASTM. DESIGNATION	Q'TY
462	Retaining Plug	Brass	B 21	1
409	Tear Drop	Ductile Iron	A 536 Gr. 65-45-12	1
352	O-Ring C	Rubber (Buna N)	D 2000 BK 707	2
351	O-Ring B	Rubber (Buna N)	D 2000 BK 707	2
329	Gasket O-Ring	Rubber (Buna N)	D 2000 BK 807	1
324	Gasket	Rubber (Buna N)	D 2000 BK 807	1
302	Cover Bolt	Zinc Coated Steel	A 307 Grade B	1set
297	Air Cushion Bolt	Stainless Steel	A 276 Type 304	1set
291	Washer	Brass	B 21	1
287	Spacer	Brass	B 21	2
283	Arm Bolt	Zinc Coated Steel	A 307 Grade B	1
281	Disc Nut	Brass	B 21	1
262	Disc Stud	Brass	B 21	1
220	Snap Ring	Stainless Steel	A 276 Type 420	1
197	Weight Bolt & Nut	Zinc Coated Steel	A 307 Grade B	2
188	Disc Seat Bolt	Stainless Steel	A 276 Type 304	1set
167	Pin	Stainless Steel	A 276 Type 304	2
166	Plug	Stainless Steel	A 276 Type 304	1
161	Key	Stainless Steel	A 276 Type 304	1
159	Hinge Pin	Stainless Steel	A 276 Type 316	1
155	Weight Arm	Ductile Iron	A 536 Gr. 65-45-12	1
154	Bolt & Nut	Zinc Coated Steel	A 307 Grade B	1
088	Seat Nut	Brass	B 21	1
062	Disc Seat Ring	Rubber (Buna N)	D 2000 BK 807	1
061	Body Seat Ring	Stainless Steel	A 276 Type 316	1
056	Air Cushion	Bronze	B 62	1set
024	Seat Holder	See Remark		1
023	Arm	Ductile Iron	A 536 Gr. 65-45-12	1
016	Weight	Cast Iron	A 126 Class B	1
014	Cover	Ductile Iron	A 536 Gr. 65-45-12	1
003	Disc	Ductile Iron	A 536 Gr. 65-45-12	1
001	Body	Ductile Iron	A 536 Gr. 65-45-12	1

MATERIAL LIST		
HYDRD SHELL		700 PSI.
HYDRD VALVE SEAT		350 PSI.
HYDRD BACK SEAT		— PSI.
AIR SEAT		— PSI.
STEAM		— PSI.
TEST PRESSURE		
WORKING PRESSURE		350 PSI.



SCALE	DR. JON COLPAN	DATE 10/19/10	REF. DWG.
N.T.S.	CHK.	APP.	E.C.N. USA1363C

TITLE		
SIZE 3" TO 12" SWING CHECK VALVE AWWA C508 STAINLESS STEEL BODY SEAT RING & BUNA N DISC SEAT RING WITH ONE LEVER, WEIGHT AND AIR CUSHION		
TYPE: 8501AS1AW	DWG NO. HP85001	REV. 3

DS01 ISSUED - 240640 REVISED -