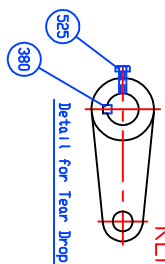
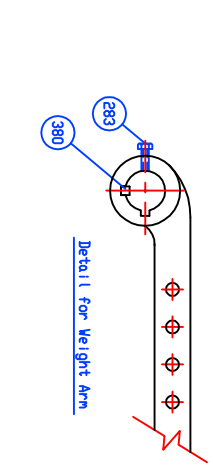
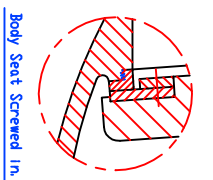
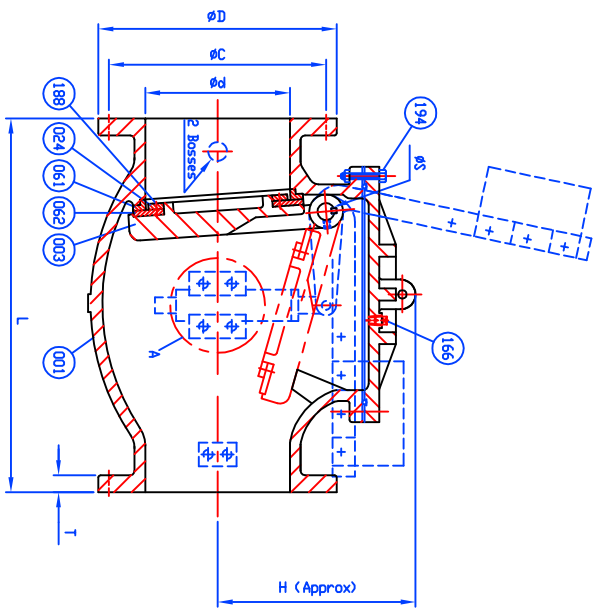
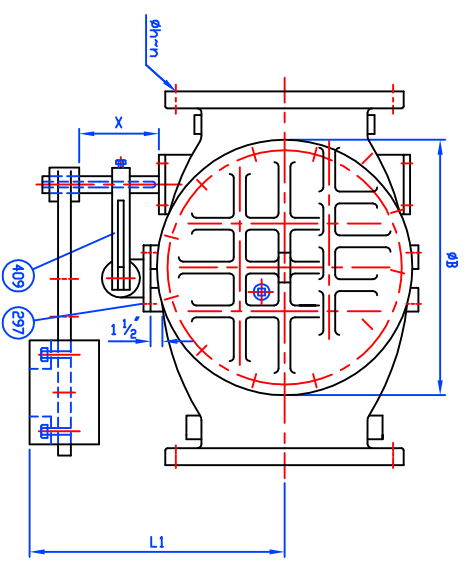


SUPPLIED WITH 8 MILS AMERLOCK 2 RED OXIDE EPOXY INTERIOR AND EXTERIOR OF THE VALVE

REFERENCE ONLY



Marking

SIZE (INCH)

CCNE

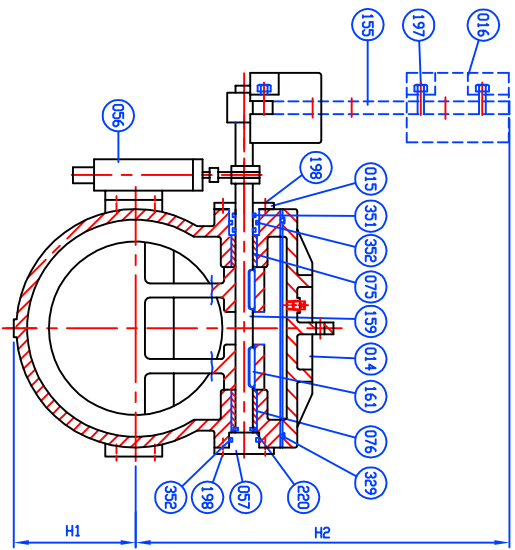
350 CUP

AWMA C508

DI

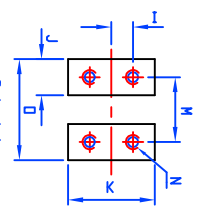
POURING DATE

SERIES 8500



Dimensions in inches.

SIZE	ANSI B16.1 CL. 125					ØS	ØB	H	H1	H2	I	J	K	M	N	Ø	L1	X
Ød	ØD	ØC	Øh	n	T													
14 (350)	31	21	18 3/4	1 1/8	12	1 3/8	1 3/4	22 3/16	15 9/16	12 1/16	33 3/16	1	2 1/8	4 1/2	4	23 1/2	9.5	
16 (400)	36	23 1/2	21 1/4	1 1/8	16	1 7/16	2	24 1/8	21 1/2	13 5/16	36 11/16	1	2 1/8	4 1/2	4	26 3/4	10.75	
18 (450)	40	25	22 3/4	1 1/4	16	1 9/16	2	28 3/8	25	14 5/8	41 7/8	1	2 1/8	4 1/2	4	28 7/8	11.25	
20 (500)	40	27 1/2	25	1 1/4	20	1 11/16	2 1/4	30 13/16	27 9/16	15 3/8	46	1.5	2 1/2	5	4 1/2	32 1/4	11.5	
24 (600)	48	32	29 1/2	1 3/8	20	1 7/8	2 1/4	35 3/8	32 1/16	17 7/8	52 3/4	1.5	2 1/2	5	4 1/2	36 1/8	11.5	



QTY	DESCRIPTION	MATERIAL	ASTM DESIGNATION	P/TV
1	TEAR DROP BOLT	ZINC COATED STEEL	A 307 GRADE B	1
1	TEAR DROP	DUCTILE IRON	A 536 GR. 65-45-12	1
2	KEY B	STAINLESS STEEL	A 276 TYPE 304	2
2	D-RING C	RUBBER (BUNA ND)	D 2000 BK 707	2
2	D-RING B	RUBBER (BUNA ND)	D 2000 BK 707	2
1	COVER D-RING	RUBBER (BUNA ND)	D 2000 BK 807	1
1	AIR CUSHION BOLT	STAINLESS STEEL	A 276 TYPE 304	1
1	ARM BOLT	ZINC COATED STEEL	A 307 GRADE B	1
1	SNAP RING	STAINLESS STEEL	A 307 GRADE B	1
2	END PLATE BOLT	ZINC COATED STEEL	A 307 GRADE B	2
2	WEIGHT BOLT	ZINC COATED STEEL	A 307 GRADE B	2
1	COVER BOLT & NUT	ZINC COATED STEEL	A 276 GRADE B	1
1	DISC SEAT BOLT	STAINLESS STEEL	A 276 TYPE 304	1
1	PLUG Ø1"	MALLEABLE IRON	A 47	1
2	KEY A	STAINLESS STEEL	A 276 TYPE 304	2
1	HINGE PIN	STAINLESS STEEL	A 276 TYPE 316	1
1	WEIGHT ARM	DUCTILE IRON	A 536 GR. 65-45-12	1
1	BUSHING (A)	BRONZE	B 62	1
1	DISC SEAT RING	RUBBER (BUNA ND)	D 2000 BK 807	1
1	BODY SEAT RING	STAINLESS STEEL	A 276 TYPE 316	1
1	END PLATE (B)	DUCTILE IRON	A 536 GR. 65-45-12	1
1	AIR CUSHION	BRONZE	B 62	1
1	SEAT HOLDER	DUCTILE IRON	A 536 GR. 65-45-12	1
1	WEIGHT	CAST IRON	A 126 CLASS B	1
1	END PLATE (A)	BRONZE	B 62	1
1	COVER	DUCTILE IRON	A 536 GR. 65-45-12	1
1	DISC	DUCTILE IRON	A 536 GR. 65-45-12	1
1	BODY	DUCTILE IRON	A 536 GR. 65-45-12	1

HYDRO SHELL	700	PSI.
HYDRO VALVE SEAT	350	PSI.
HYDRO BACK SEAT	—	PSI.
AIR SEAT	—	PSI.
STEAM	—	PSI.
WORKING PRESSURE	350	PSI.

HENRY PRATT - CCNE

401 S. HIGHLAND AVE. AUBURN, IL 62506
 DR. JOHN COLPANI
 N.T.S.
 DATE 10/19/10
 PHONE: 630.844.4000 FAX: 630.844.4124
 USA1364D

SIZE 14" TO 24" SWING CHECK VALVE AWMA C508
 STAINLESS STEEL BODY SEAT RING & BUNA N DISC SEAT RING
 WITH ONE LEVER, WEIGHT AND AIR CUSHION

8501AS1AW HP85002