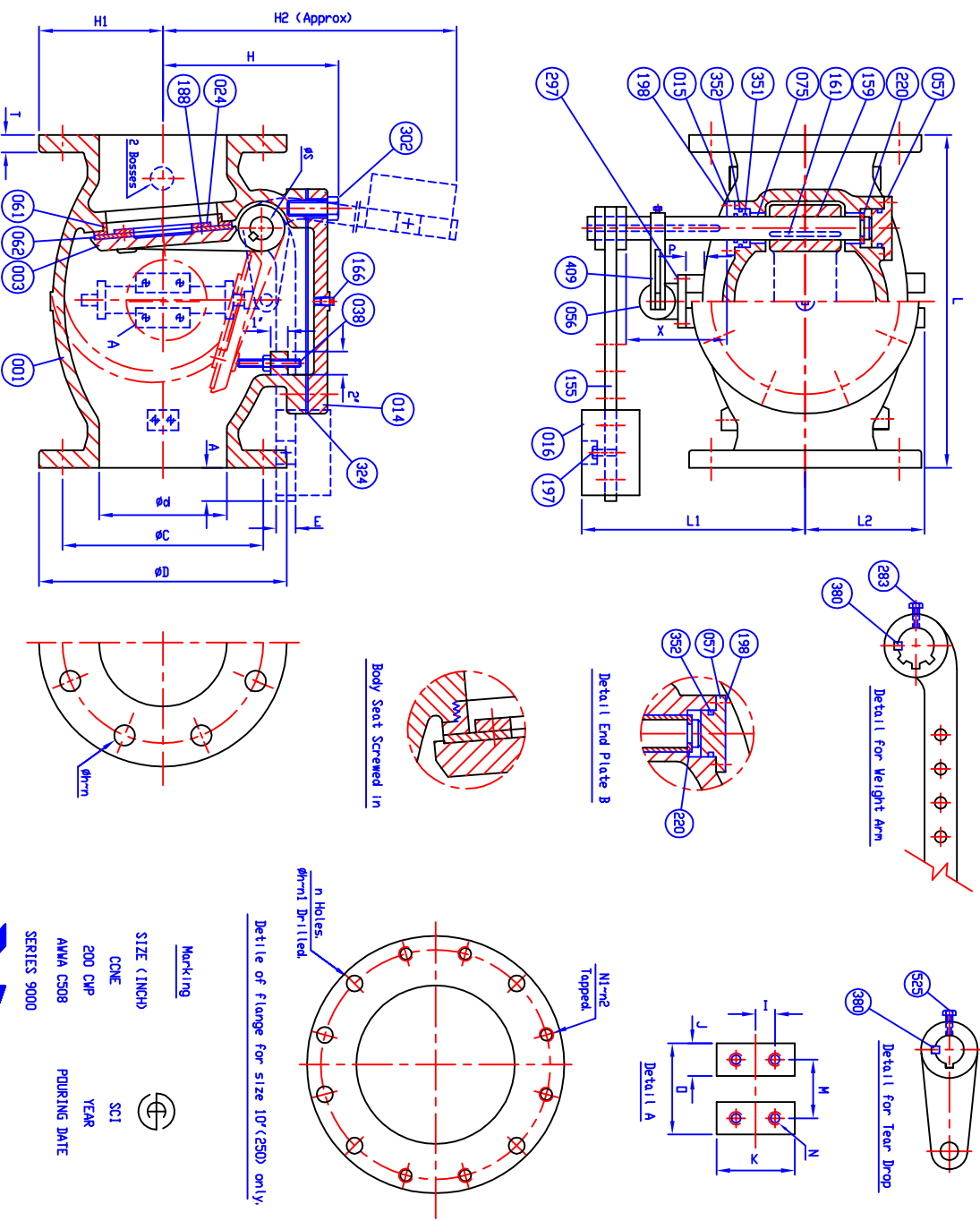


SUPPLIED WITH 8 MILS AMERLOCK 2 RED OXIDE EPOXY INTERIOR AND EXTERIOR OF THE VALVE

REFERENCE ONLY



SIZE øD mm.	L	ANSI B16.1 øD	CL. 125 øh	n	T	øS	E	H	H1	H2	I	J	K	M	N	N1	n1	n2	D	P	A	X	L1	L2	Plug Size
3 (80)	11	7 1/2	6	3/4	4	3/4	1	1 13/16	6 3/8	3 3/4	3/4	1 1/2	3	2 1/2	1/2x13/16(UNC)	—	—	—	4	3/4	5	5.5	10 3/4	4	1/2
4 (100)	13	9	7 1/2	3/4	8	13/16	1 1/8	1 13/16	7 3/8	4 1/2	19 5/8	3/4	1 1/2	3	2 1/2	1/2x13/16(UNC)	—	—	4	3/4	5	5.75	11 1/2	4 1/16	1/2
6 (150)	16	11	9 1/2	7/8	8	1	1 3/8	1 13/16	9 3/16	5 1/2	22 7/8	3/4	1 1/2	3	2 1/2	1/2x13/16(UNC)	—	—	4	3/4	5	6	12 7/8	5 3/4	3/4
8 (200)	19 1/2	13 1/2	11 3/4	7/8	8	1 1/8	1 3/4	1 13/16	10 7/8	6 3/4	29 7/8	7/8	1 3/4	3 1/2	3/4	3/4x11/16(UNC)	—	—	5	1 1/4	5.5	7	15 9/8	7 7/8	3/4
10 (250)	22	16	14 1/4	1	12	1 3/16	2 1/8	2 1/2	13 1/16	8	35	7/8	1 3/4	3 1/2	3/4	3/4x9/16(UNC)	6	6	5	1 1/4	6.08	7.75	17 9/16	9 3/16	1
12 (300)	26	19	17	1	12	1 1/4	2 1/2	2 1/2	15 9/16	9 1/2	40 7/8	7/8	1 3/4	3 1/2	3/4	3/4x11/16(UNC)	—	—	5	1 1/4	5.47	8.75	20 1/8	10 3/4	1

- Dimensions in inches.

Remark - Part No. (024) Seat Holder
 Size 3"-6" → Cast Iron, A126 Class B
 Size 8"-12" → Ductile Iron, A536 Gr. 65-45-12

Part No.	Description	Material	Quantity
525	Tear Drop Bolt	Zinc Coated Steel	A 307 Grade B
409	Tear Drop	Ductile Iron	A 536 Gr. 65-45-12
380	Key B	Stainless Steel	A 276 Type 304
352	O-Ring C	Rubber (Buna N)	D 2000 BK 707
351	O-Ring B	Rubber (Buna N)	D 2000 BK 707
324	Cover Gasket	Rubber (Buna N)	D 2000 BK 807
302	Cover Bolt	Zinc Coated Steel	A 307 Grade B
297	Air Cushion Bolt	Stainless Steel	A 276 Type 304
283	Arm Bolt	Zinc Coated Steel	A 307 Grade B
220	Snap Ring	Stainless Steel	—
198	End Plate Bolt	Zinc Coated Steel	A 307 Grade B
197	Weight Bolt	Zinc Coated Steel	A 307 Grade B
188	Disc Seat Bolt	Stainless Steel	A 276 Type 304
166	Plug	Malleable Iron	A 47
161	Key A	Stainless Steel	A 276 Type 304
159	Hinge Pin	Stainless Steel	A 276 Type 304
155	Weight Arm	Ductile Iron	A 536 Gr. 65-45-12
075	Bushing	Bronze	B 62
062	Disc Seat Ring	Rubber (Buna N)	D 2000 BK 807
061	Body Seat Ring	Bronze	B 62
057	End Plate B	Ductile Iron	A 536 Gr. 65-45-12
056	Air Cushion	Bronze	B 62
038	Stopper	Stainless Steel	A 276 Type 304
024	Seat Holder	See Remark	—
016	Weight	Cast Iron	A 126 Class B
015	End Plate A	Bronze	B 62
014	Cover	Cast Iron	A 126 Class B
003	Disc	Ductile Iron	A 536 Gr. 65-45-12
001	Body	Cast Iron	A 126 Class B

HENRY PRATT - CCNE

401 S. HIGHLAND AVE. AMOKA, IL 60906
 PHONE: 630.944.4000 FAX: 630.944.4124
 SALES: JON GOLPAN
 N.T.S. USA1356C

SIZE 3" TO 12" SWING CHECK VALVE AWWA C508
 BRONZE BODY SEAT RING & BUNA N DISC SEAT RING
 WITH ONE LEVER, WEIGHT AND AN AIR CUSHION
 9001AB1AW HP900002