

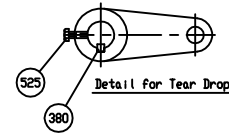
Marking

SIZE (INCH) \oplus
 CCNE SCI
 150 CWP YEAR
 AWWA C508 POURING DATE
 SERIES 9000

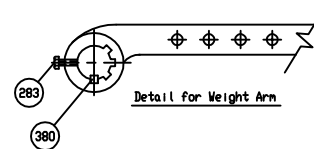
525	Tear Drop Bolt	Zinc Coated Steel	A 307 Grade B	1
409	Tear Drop	Ductile Iron	A 536 Gr. 65-45-12	1
380	Key B	Stainless Steel	A 276 Type 304	2
352	O-Ring C	Rubber (Buna N)	D 2000 BK 707	2
351	O-Ring B	Rubber (Buna N)	D 2000 BK 707	2
329	Cover O-Ring	Rubber (Buna N)	D 2000 BK 807	1
324	Cover Gasket	Rubber (Buna N)	D 2000 BK 807	1
283	Arm Bolt	Zinc Coated Steel	A 307 Grade B	1
220	Snap Ring	Stainless Steel	A 276 Type 420	2
198	End Plate Bolt	Zinc Coated Steel	A 307 Grade B	1 ^{SEE}
197	Weight Bolt	Zinc Coated Steel	A 307 Grade B	2
194	Cover Bolt & Nut	Zinc Coated Steel	A 307 Grade B	1 ^{SEE}
188	Disc Seat Bolt	Stainless Steel	A 276 Type 304	1 ^{SEE}
166	Plug ϕ 1"	Stainless Steel	A 276 Type 304	1
161	Key A	Stainless Steel	A 276 Type 304	2
159	Hinge Pin	Stainless Steel	A 276 Type 304	1
155	Weight Arm	Ductile Iron	A 536 Gr. 65-45-12	1
076	Bushing (B)	Bronze	B 62	1
075	Bushing (A)	Bronze	B 62	1
062	Disc Seat Ring	Rubber (Buna N)	D 2000 BK 807	1
061	Body Seat Ring	Bronze	B 62	1
057	End Plate (B)	Ductile Iron	A 536 Gr. 65-45-12	1
038	Stopper	Stainless Steel	A 276 Type 304	1
024	Seat Holder	Ductile Iron	A 536 Gr. 65-45-12	1
016	Weight	Cast Iron	A 126 Class B	1
015	End Plate (A)	Bronze	B 62	1
014	Cover	Cast Iron	A 126 Class B	1
003	Disc	Ductile Iron	A 536 Gr. 65-45-12	1
001	Body	Cast Iron	A 126 Class B	1



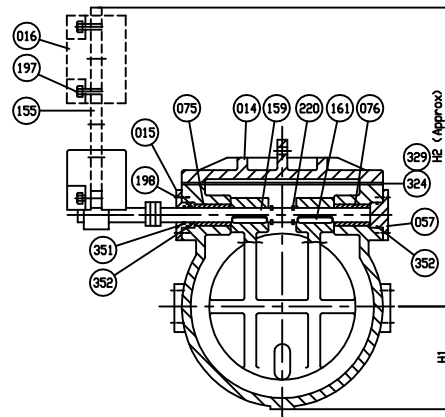
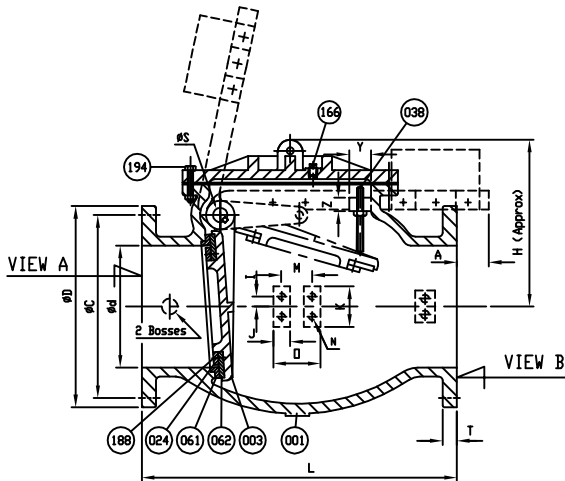
Body Seat Screw in.



Detail for Tear Drop



Detail for Weight Arm



SIZE ϕ d in. mm.	L	ANSI B16.1 CL. 125					A	ϕ S	ϕ B	H	H1	H2	I	J	K	M	N	N1	n1	n2	n3	n4	ϕ	P	L1	X	Y	Z
		ϕ D	ϕ C	ϕ h	n	T																						
14 (350)	30	21	18 ³ / ₄	1 ¹ / ₈	12	1 ³ / ₈	6.5	3	22.24	21 ¹ / ₁₆	12 ¹ / ₁₆	43 ⁷ / ₈	1	2 ¹ / ₈	4 ¹ / ₂	4	3 ³ / ₄ ×10v<UNC>	-	-	-	-	-	6	1 ¹ / ₂	23 ¹ / ₂	9.5	2.5	1 ¹ / ₂
16 (400)	30 ¹ / ₂	23 ¹ / ₂	21 ¹ / ₄	1 ¹ / ₈	16	1 ¹ / ₁₆	8.75	3 ¹ / ₂	24 ¹ / ₈	24	13 ⁵ / ₁₆	50 ¹ / ₄	1	2 ¹ / ₈	4 ¹ / ₂	4	3 ³ / ₄ ×10v<UNC>	1×8v<UNC>	12	4	8	8	6	1 ¹ / ₂	26 ⁷ / ₈	10.75	2.5	1 ¹ / ₂
18 (450)	33 ¹ / ₂	25	22 ³ / ₄	1 ¹ / ₄	16	1 ⁹ / ₁₆	8.25	3 ³ / ₄	28.35	27 ⁹ / ₁₆	14 ⁵ / ₈	55 ³ / ₄	1	2 ¹ / ₈	4 ¹ / ₂	4	3 ³ / ₄ ×10v<UNC>	1 ¹ / ₈ ×7v<UNC>	-	16	-	-	6	1 ¹ / ₂	28 ³ / ₄	11.25	3	1 ³ / ₄
20 (500)	40	27 ¹ / ₂	25	1 ¹ / ₄	20	1 ¹ / ₁₆	8	4	31	31 ⁵ / ₁₆	15 ³ / ₈	62 ¹ / ₈	1.5	2 ¹ / ₂	5	4 ¹ / ₂	1×8v<UNC>	-	-	-	-	7	2	32 ¹ / ₂	11.5	3.5	2	
24 (600)	46	32	29 ¹ / ₂	1 ³ / ₈	20	1 ¹ / ₈	7	4	35.85	35 ¹ / ₄	17 ³ / ₈	69 ³ / ₈	1.5	2 ¹ / ₂	5	4 ¹ / ₂	1×8v<UNC>	-	-	-	-	7	2	34 ³ / ₈	11.5	3.5	2	

MATERIAL LIST		
HYDRD SHELL		300 PSI.
HYDRD VALVE SEAT		150 PSI.
HYDRD BACK SEAT		- PSI.
AIR SEAT		- PSI.
STEAM		- PSI.
TEST PRESSURE		
WORKING PRESSURE		150 PSI.

PRATT

SCALE	N.T.S.	DR. JON COLPAN	DATE 10/19/10	REV. DRG.	
		CHK.	APP.	ESCL.	USA1350C
TITLE	SIZE 14" TO 24" SWING CHECK VALVE AWWA C508 BRONZE BODY SEAT RING & BUNA N DISC SEAT RING WITH ONE LEVER AND WEIGHT				
TYPE	9001AB1LW	DWG NO.	HP90004	REV.	4

DS01 ISSUED : 240640 REVISED: - USA1350A=>CHANGE F-F,THREAD UNC