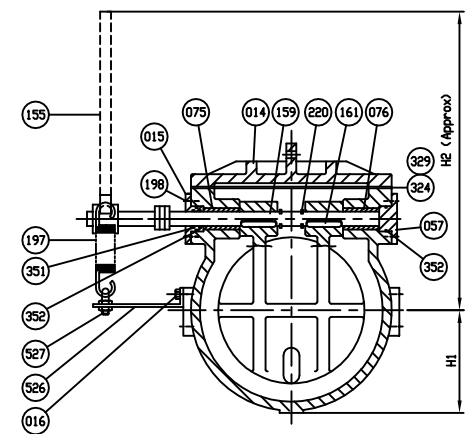
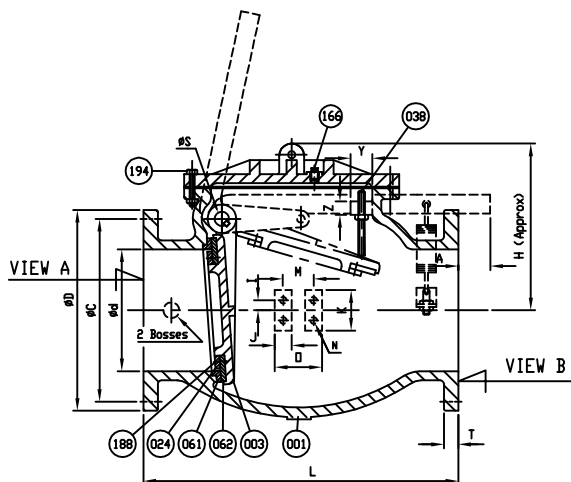
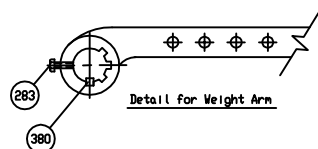
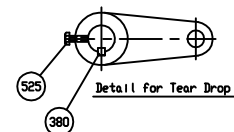
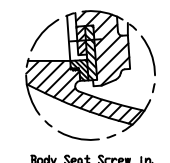


Marking
 SIZE (INCH) \oplus
 CCNE SCI
 150 CWP YEAR
 AWWA C508 POURING DATE
 SERIES 9000

527	Stud Nut and Nut	Zinc Coated Steel	A 307 Grade B	1
526	Arm B	Zinc Coated Steel	A 36	1500
525	Tear Drop Bolt	Zinc Coated Steel	A 307 Grade B	1
409	Tear Drop	Ductile Iron	A 536 Gr. 65-45-12	1
380	Key B	Stainless Steel	A 276 Type 304	2
352	O-Ring C	Rubber (Buna N)	D 2000 BK 707	2
351	O-Ring B	Rubber (Buna N)	D 2000 BK 707	2
329	Cover O-Ring	Rubber (Buna N)	D 2000 BK 807	1
324	Cover Gasket	Rubber (Buna N)	D 2000 BK 807	1
283	Arm Bolt	Zinc Coated Steel	A 307 Grade B	1
220	Snap Ring	Stainless Steel	A 276 Type 420	2
198	End Plate Bolt	Zinc Coated Steel	A 307 Grade B	1500
197	Spring	Zinc Coated Steel	Spring Steel	1
194	Cover Bolt & Nut	Zinc Coated Steel	A 307 Grade B	1500
188	Disc Seat Bolt	Stainless Steel	A 276 Type 304	1500
166	Plug #1*	Stainless Steel	A 276 Type 304	1
161	Key A	Stainless Steel	A 276 Type 304	2
159	Hinge Pin	Stainless Steel	A 276 Type 304	1
155	Weight Arm	Ductile Iron	A 536 Gr. 65-45-12	1
076	Bushing (B)	Bronze	B 62	1
075	Bushing (A)	Bronze	B 62	1
062	Disc Seat Ring	Rubber (Buna N)	D 2000 BK 807	1
061	Body Seat Ring	Bronze	B 62	1
057	End Plate (B)	Ductile Iron	A 536 Gr. 65-45-12	1
038	Stopper	Stainless Steel	A 276 Type 304	1
024	Seat Holder	Ductile Iron	A 536 Gr. 65-45-12	1
003	Disc	Ductile Iron	A 536 Gr. 65-45-12	1
001	Body	Cast Iron	A 126 Class B	1



SIZE ød in. mm.	L	ANSI B16.1 CL. 125					A	øS	øB	H	H1	H2	I	J	K	M	N	N1	n1	n2	n3	n4	D	P	L1	X	Y	Z
		øD	øC	øh	n	T																						
14 (350)	30	21	18 3/4	1 1/8	12	1 3/8	6.5	3	22.24	21 1/16	12 1/16	43 3/8	1	2 1/8	4 1/2	4	3/4x10v<UNC>	-	-	-	-	6	1 1/2	23 1/2	9.5	2.5	1 1/2	
16 (400)	30 1/2	23 1/2	21 1/4	1 1/8	16	1 1/16	8.75	3 1/2	24 1/8	24	13 9/16	50 1/4	1	2 1/8	4 1/2	4	3/4x10v<UNC>	1x8v<UNC>	12	4	8	8	6	1 1/2	26 7/8	10.75	2.5	1 1/2
18 (450)	33 1/2	25	22 3/4	1 1/4	16	1 9/16	8.25	3 3/4	28.35	27 9/16	14 5/8	55 3/4	1	2 1/8	4 1/2	4	3/4x10v<UNC>	1 1/8x7v<UNC>	-	16	-	-	6	1 1/2	28 3/4	11.25	3	1 3/4
20 (500)	40	27 1/2	25	1 1/4	20	1 11/16	8	4	31	31 5/16	15 3/8	62 1/8	1.5	2 1/2	5	4 1/2	1x8v<UNC>	-	-	-	-	7	2	32 1/2	11.5	3.5	2	
24 (600)	46	32	29 1/2	1 3/8	20	1 7/8	7	4	35.85	35 1/4	17 3/8	69 3/8	1.5	2 1/2	5	4 1/2	1x8v<UNC>	-	-	-	-	7	2	34 3/8	11.5	3.5	2	

ND.	PARTS	MATERIAL	ASTM. DESIGNATION.	Q' TY
MATERIAL LIST				
	HYDRO SHELL		300	PSI.
	HYDRO VALVE SEAT		150	PSI.
	HYDRO BACK SEAT		-	PSI.
	AIR SEAT		-	PSI.
	STEAM		-	PSI.
TEST PRESSURE				
	WORKING PRESSURE		150	PSI.



SCALE	DR. R. RACKAWACK	DATE 12/3/10	REV. DRG.
N.T.S.	CHK. APP.	LEGAL	USA1350C
TITLE			
SIZE 14" TO 24" SWING CHECK VALVE AWWA C508 BRONZE BODY SEAT RING & BUNA N DISC SEAT RING WITH ONE LEVER AND SPRING			
TYPE:		9001AB1LS	REV.
		HP90007	4

DS01 ISSUED : 240640 REVISED: - USA1350A => CHANGE F - F, THREAD UNC

REVISION 1, CHANGED ITEM 166 MTRL. TYPE FROM MALLEABLE IRON A47 TO, UJC, 03/08/11, ECR# 456
 REVISION 2, ADDED ITEM 220 SNAP RING MATERIAL TYPE, UJC, 04/04/11, ECR# 491
 REVISION 3, ADDED COVER O-RING TO MATERIAL TABLE AND REMOVED PAINT NOTE, AA, 11/28/17
 REVISION 4, UPDATE VIEW B FOR 16" SIZE AND ADDED COLUMNS n3 & n4, JCL, 02/28/18