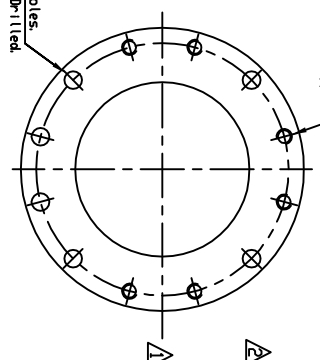
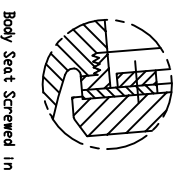
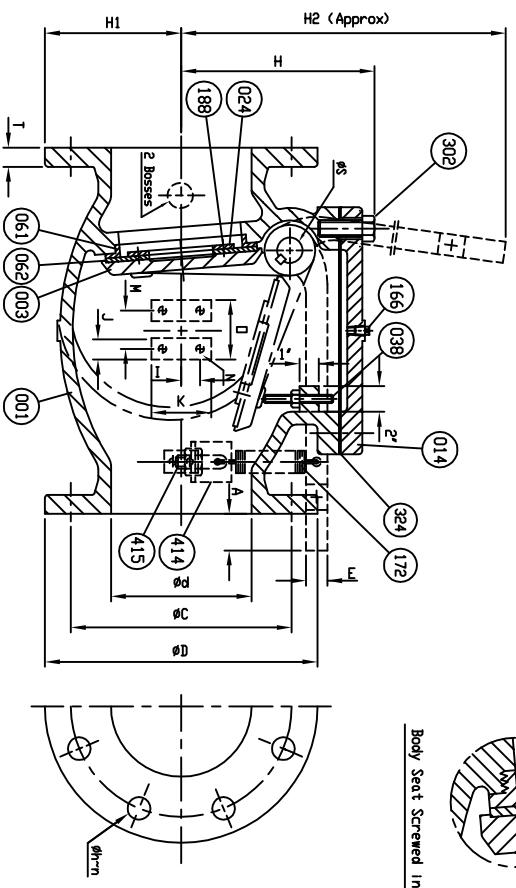
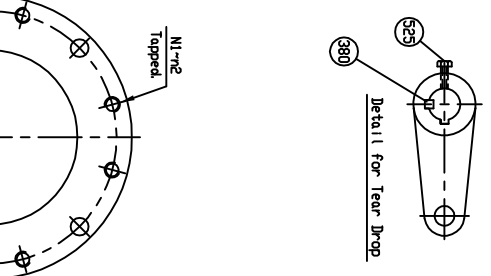
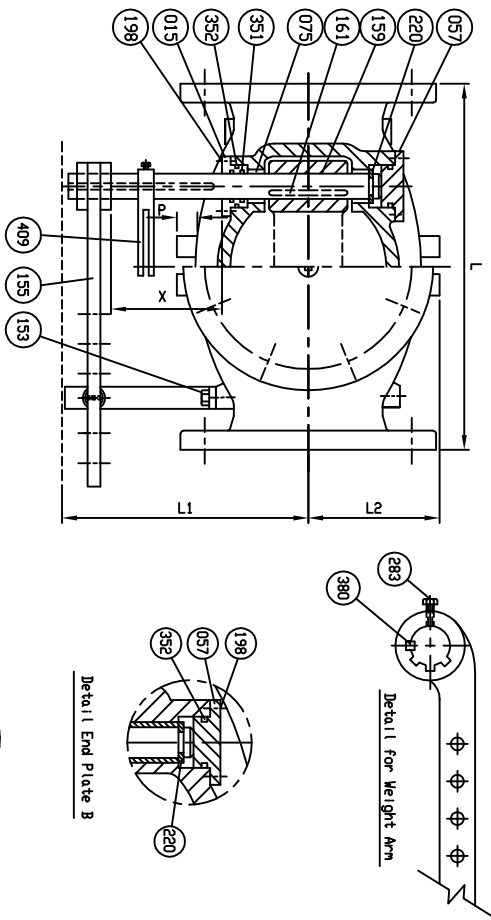


SUPPLIED WITH 8 MILS AMERLOCK 2 RED OXIDE EPOXY INTERIOR AND EXTERIOR OF THE VALVE

REFERENCE ONLY



Marking
 SIZE (INCH)
 CONE
 200 CUP
 AMMA CS08
 SERIES 9000
 POURING DATE
 YEAR
 SC1

- Dimensions in inches

SIZE	L	ANSI B16.1 CL. 125	ØS	E	H	H1	H2	I	J	K	M	N	N1	n1	n2	Ø	A	X	L1	L2	Plug Size
In.	Ød	ØC	Øh	n	T																
3 (80)	11	7 1/2	6	3/4	4	3/4	1	1 1/8	6 3/8	3 1/4	18	3/4	1 1/2	3	2 1/2	1/2 x 13 (UNC)	—	—	—	—	—
4 (100)	13	9	7 1/2	3/4	4	1 1/8	1 1/8	7 3/8	4 1/2	19 5/8	3/4	1 1/2	3	2 1/2	1/2 x 13 (UNC)	—	—	—	—	—	—
6 (150)	16	11	9 1/2	7/8	8	1 1/8	1 1/8	9 3/8	5 1/2	22 7/8	3/4	1 1/2	3	2 1/2	1/2 x 13 (UNC)	—	—	—	—	—	—
8 (200)	19 1/2	13 1/2	11 3/4	7/8	8	1 1/8	1 3/4	11 1/8	6 3/4	29 7/8	7/8	1 3/4	3 1/2	3 1/4	3/8 x 11 (UNC)	—	—	—	—	—	—
10 (250)	22	16	14 1/4	1	12	1 3/8	2 1/8	13 3/8	8	35	7/8	1 3/4	3 1/2	3 1/4	3/8 x 11 (UNC)	7/8 x 9 (UNC)	—	—	—	—	—
12 (300)	26	19	17	1	12	1 1/4	2 1/2	15 3/8	9 1/2	40 3/8	7/8	1 3/4	3 1/2	3 1/4	3/8 x 11 (UNC)	—	—	—	—	—	—

NO.	DESCRIPTION	MATERIAL	QTY
525	Tear Drop Bolt	Zinc Coated Steel	A 307 Grade B
415	Stud Nut & Nut	Zinc Coated Steel	A 307 Grade B
414	Bracket	Zinc Coated Steel	A36
409	Tear Drop	Ductile Iron	A 536 Gr. 65-45-12
380	Key B	Stainless Steel	A 276 Type 304
351	D-Ring C	Rubber (Buna N)	D 2000 BK 707
352	D-Ring B	Rubber (Buna N)	D 2000 BK 707
324	Cover Gasket	Rubber (Buna N)	D 2000 BK 807
302	Cover Bolt	Zinc Coated Steel	A 307 Grade B
283	Arm Bolt	Zinc Coated Steel	A 307 Grade B
220	Snap Ring	Stainless Steel	A 276 Type 420
198	End Plate Bolt	Zinc Coated Steel	A 307 Grade B
188	Disc Seat Bolt	Stainless Steel	A 276 Type 304
172	Spring	Zinc Coated Steel	A36
166	Plug	Stainless Steel	A 276 Type 304
161	Key A	Stainless Steel	A 276 Type 304
159	Hinge Pin	Stainless Steel	A 276 Type 304
155	Arm	Ductile Iron	A 536 Gr. 65-45-12
153	Bolt	Zinc Coated Steel	A 307 Grade B
075	Bushing	Bronze	B 62
062	Disc Seat Ring	Rubber (Buna N)	D 2000 BK 807
061	Body Seat Ring	Bronze	B 62
057	End Plate B	Ductile Iron	A 536 Gr. 65-45-12
038	Stopper	Stainless Steel	A 276 Type 304
024	Seat Holder	See Remark	
015	End Plate A	Bronze	B 62
014	Cover	Cast Iron	A 126 Class B
003	Disc	Ductile Iron	A 536 Gr. 65-45-12
001	Body	Cast Iron	A 126 Class B

HYDRO SHELL	TEST PRESSURE
400 PSI.	200 PSI.

HYDRO VALVE SEAT	TEST PRESSURE
200 PSI.	200 PSI.

HYDRO BACK SEAT	TEST PRESSURE
— PSI.	— PSI.

AIR SEAT	TEST PRESSURE
— PSI.	— PSI.

STEM	TEST PRESSURE
— PSI.	— PSI.

HENRY PRATT - CCNE

401 S. HOWLAND AVE. AMAROK, IL. 60806
 PHONE: 630.944.4000; FAX: 630.944.4124
 DATE 01/18/11
 USA1349D

SCALE: N.T.S.
 DRAWN BY: JON COLPANI
 CHECKED BY: [Signature]
 SIZE 3" TO 12" SWING CHECK VALVE AMMA CS08
 BRONZE BODY SEAT RING & BUNA N DISC SEAT
 WITH ONE LEVER AND SPRING

TYPE: 9001A B1 LLS
 HP900008
 REV: 2