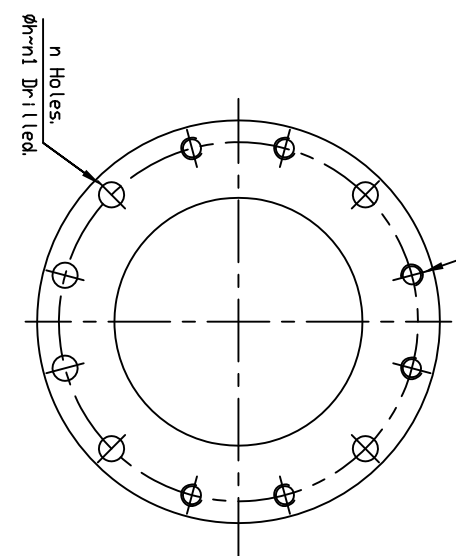
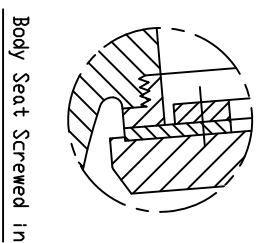
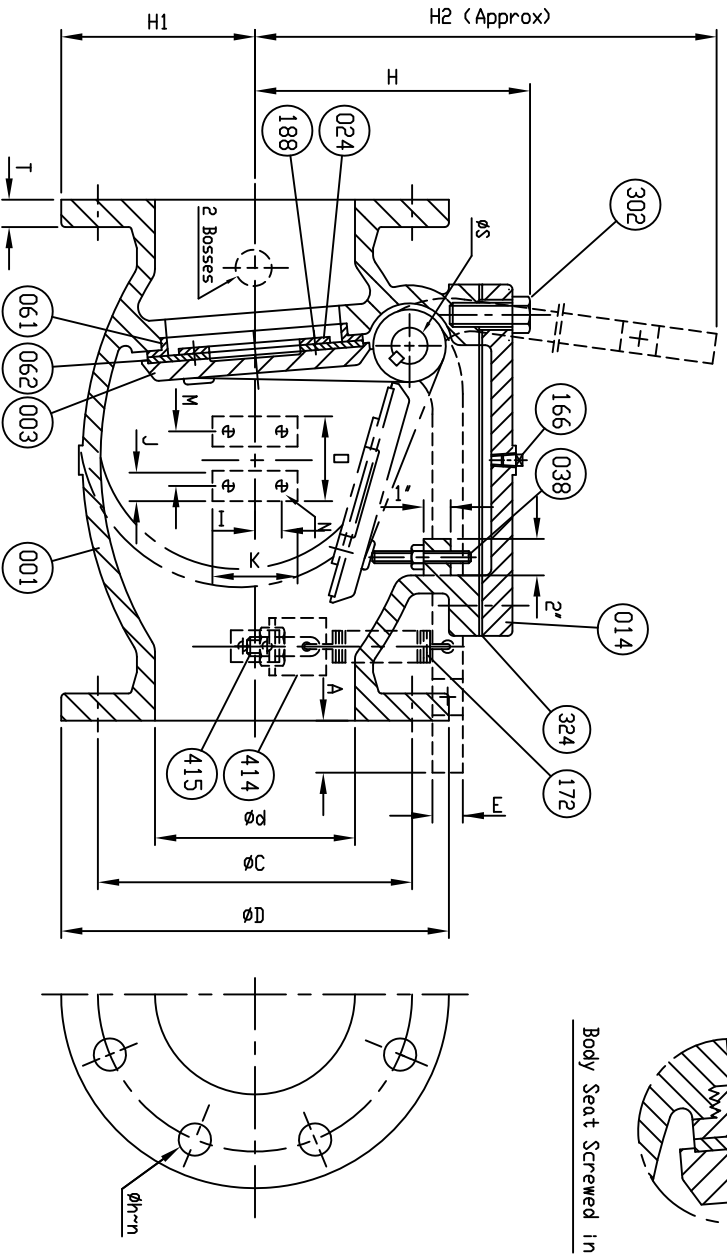
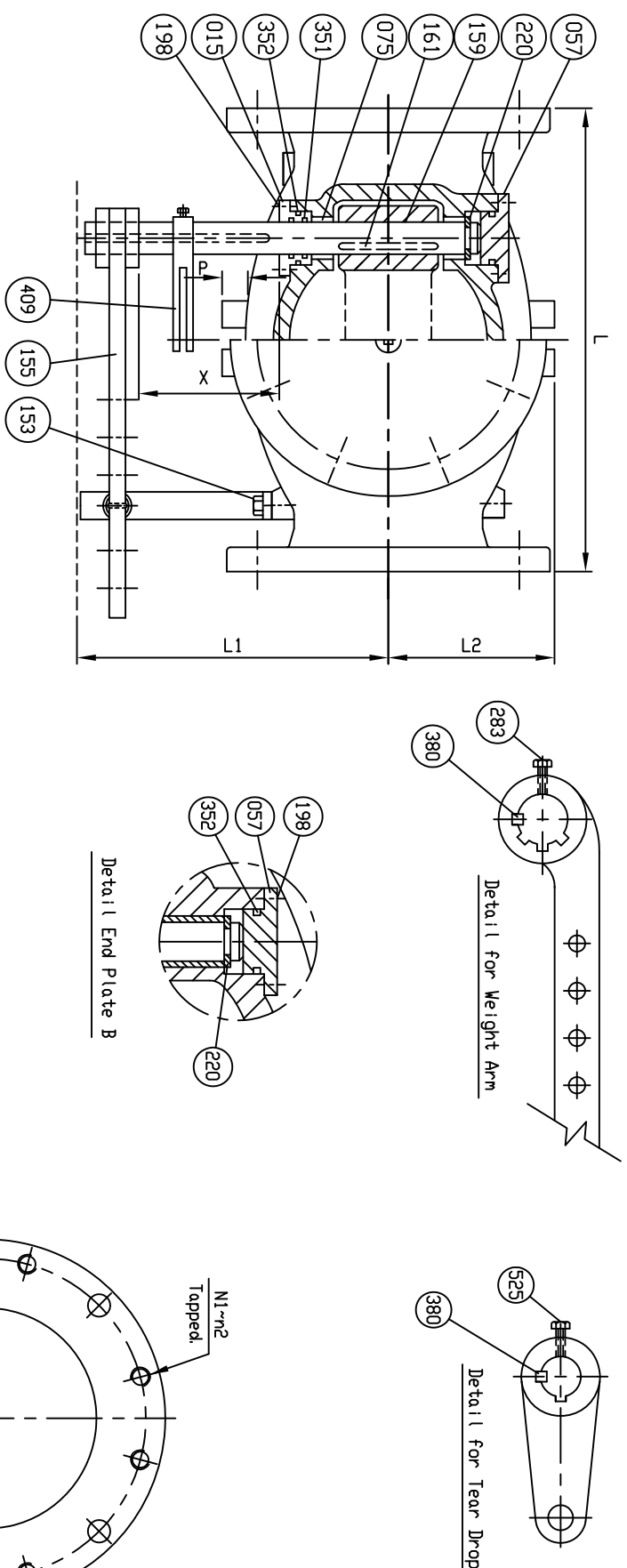


SUPPLIED WITH 8 MILS AMERLOCK 2 RED OXIDE EPOXY INTERIOR AND EXTERIOR OF THE VALVE

REFERENCE ONLY



- Dimensions in inches.

SIZE	L	ANSI B16.1 CL. 125	ØS	E	H	H1	H2	I	J	K	M	N	N1	n1	n2	D	P	A	X	L1	L2	Plug Size	
12 (300)	26	19	17	1	12	1 1/4	2 1/2	2 1/2	15 3/16	9 1/2	40 3/8	7/8	1 3/4	3 1/2	3 1/4	5 8x11v<UNC>	7/8x9v<UNC>	—	—	—	—	—	—
10 (250)	22	16	14 1/4	1	12	1 3/16	2 1/8	2 1/8	13 3/16	8	35	7/8	1 3/4	3 1/2	3 1/4	5 8x11v<UNC>	7/8x9v<UNC>	—	—	—	—	—	—
8 (200)	19 1/2	13 1/2	11 3/4	7/8	8	1 1/8	1 3/4	1 3/4	10 7/8	6 3/4	29 7/8	7/8	1 3/4	3 1/2	3 1/4	5 8x11v<UNC>	—	—	—	—	—	—	—
6 (150)	16	11	9 1/2	7/8	8	1	1 3/8	1 3/8	9 3/16	5 1/2	22 5/8	3/4	1 1/2	3	2 1/2	1 2x13v<UNC>	—	—	—	—	—	—	—
4 (100)	13	9	7 1/2	3/4	8	1 1/8	1 13/16	1 13/16	7 3/8	4 1/2	19 5/8	3/4	1 1/2	3	2 1/2	1 2x13v<UNC>	—	—	—	—	—	—	—
3 (80)	11	7 1/2	6	3/4	4	3/4	1 13/16	6 3/8	3 3/4	18	3 3/4	3/4	1 1/2	3	2 1/2	1 2x13v<UNC>	—	—	—	—	—	—	—

Marking
 SIZE (INCH)
 CONE
 200 CWP
 AWMA C508
 SERIES 9000
 SC1
 YEAR
 POURING DATE

Remark - Part No. (024) Seat Holder
 Size 3'-6" → Cast Iron, A126 Class B
 Size 8'-12" → Ductile Iron, A536 Gr. 65-45-12

NO.	DESCRIPTION	MATERIAL	QTY
525	Tear Drop Bolt	Zinc Coated Steel	1
415	Stud Nut & Nut	Zinc Coated Steel	1set
414	Bracket	Zinc Coated Steel	1set
409	Tear Drop	Ductile Iron	1
380	Key B	Stainless Steel	2
352	D-Ring C	Rubber (Buna N)	2
351	D-Ring B	Rubber (Buna N)	2
324	Cover Gasket	Rubber (Buna N)	1
302	Cover Bolt	Zinc Coated Steel	1set
283	Arm Bolt	Zinc Coated Steel	1
220	Snap Ring	Stainless Steel	1
198	End Plate Bolt	Zinc Coated Steel	2set
188	Disc Seat Bolt	Stainless Steel	1set
172	Spr Ring	Zinc Coated Steel	1
166	Plug	Stainless Steel	1
161	Key A	Stainless Steel	1
159	Hinge Pin	Stainless Steel	1
155	Arm	Ductile Iron	1
153	Bolt	Zinc Coated Steel	1
075	Bushing	Bronze	2
062	Disc Seat Ring	Rubber (Buna N)	1
061	Body Seat Ring	Stainless Steel	1
057	End Plate B	Ductile Iron	1
038	Stopper	Stainless Steel	1
024	Seat Holder	See Remark	1
015	End Plate A	Bronze	1
014	Cover	Cast Iron	1
003	Disc	Ductile Iron	1
001	Body	Cast Iron	1

MATERIAL LIST

HYDRO SHELL	400 PSI.
HYDRO VALVE SEAT	200 PSI.
HYDRO BACK SEAT	PSI.
AIR SEAT	PSI.
STEAM	PSI.
WORKING PRESSURE	200 PSI.

PRATT - CCNE

401 S. HIGHLAND AVE. AUBURN, IL 60506
 PHONE: 630.844.4000; FAX: 630.844.4124
 DR. ALEX ADAMS DATE 09/23/11 REF. DWG. USA1349D
 GSK. APP. AJ EGM.

SIZE 3" TO 12" SWING CHECK VALVE AWMA C508
 STAINLESS STEEL BODY SEAT RING & BUNA N DISC SEAT RING
 WITH ONE LEVER AND SPRING

TYPE: 9001AS1LS
 HP90034
 REV.