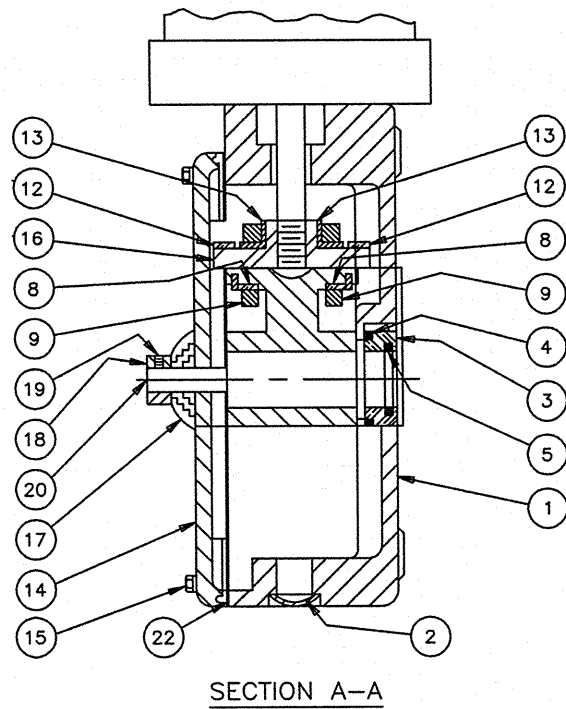
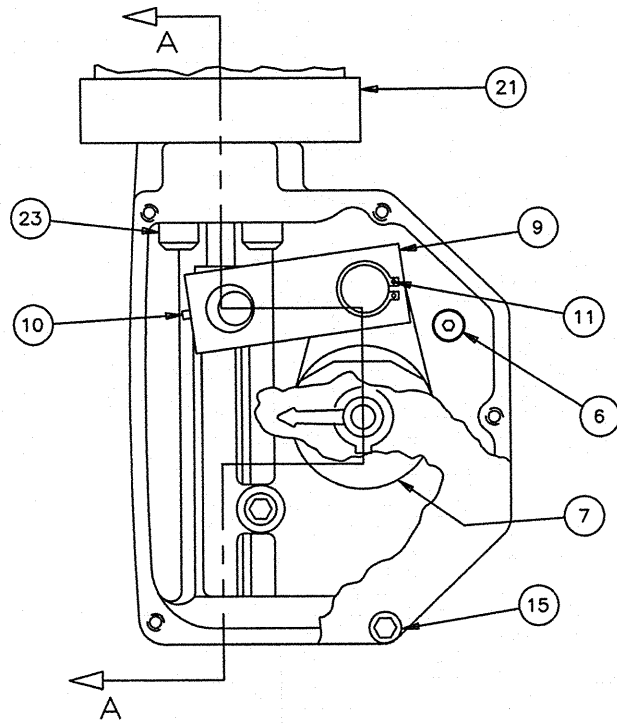


ITEM	DESCRIPTION	DESCRIPTION
1	HOUSING	CAST IRON ASTM A-126 CLASS B
2	EXPANSION PLUG	STAINLESS STEEL TYPE 304
3	INSERT	NORYL GRADE GFN3-780
4	O-RING	RUBBER BUNA-N
5	O-RING	RUBBER BUNA-N
6	CAPSCREW	ALLOY STEEL (ZINC PLATED)
7	LEVER	DUCTILE IRON ASTM A-536 GRADE 65-45-12
8	BEARING	SINTERED BRONZE
9	LINK	CARBON STEEL
10	SET SCREW	ALLOY STEEL
11	RETAINING RING	CARBON SPRING STEEL
12	SLIDER TUBE	CARBON STEEL
13	ECCENTRIC BEARING	SINTERED IRON

ITEM	DESCRIPTION	DESCRIPTION
14	COVER	CAST IRON ASTM A-126 CLASS B
15	CAPSCREW	STAINLESS STEEL TYPE 304
16	SLIDER NUT	DUCTILE IRON ASTM A-536 GRADE 65-45-12
17	GROMMET	NEOPRENE
18	INDICATOR ARROW	DIE CAST (CHROME PLATED)
19	SET SCREW	ALLOY STEEL
20	STUD FASTENER	CARBON STEEL
21	CYLINDER	FOR MATERIALS SEE CYLINDER DWG.
22	GASKET	BLENDED FIBER, CURED, NITRILE BINDER
23	CAPSCREW	CARBON STEEL



NOTE:
FOR OPPOSED CYLINDER ACTUATORS, SECOND
CYLINDER NOT SHOWN FOR CLARITY

4/15/15	MZ	ADDED NOTE	SS
3/9/12	MEM	UPDATED DWG NO	CEM
REV	DATE	BY	DESCRIPTION
			HENRY PRATT COMPANY AURORA, ILL.
CROSS SECTION PARTS AND MATERIAL LIST MDT-3S & 4S CYLINDER ACTUATOR			
SCALE	NONE	DATE	10-28-05
DRAWN BY	ES	CHECKED BY	RCB
APPROVED	GA=BORDER		
DRWG. NO.	GA-11492	REV	2
			A/C