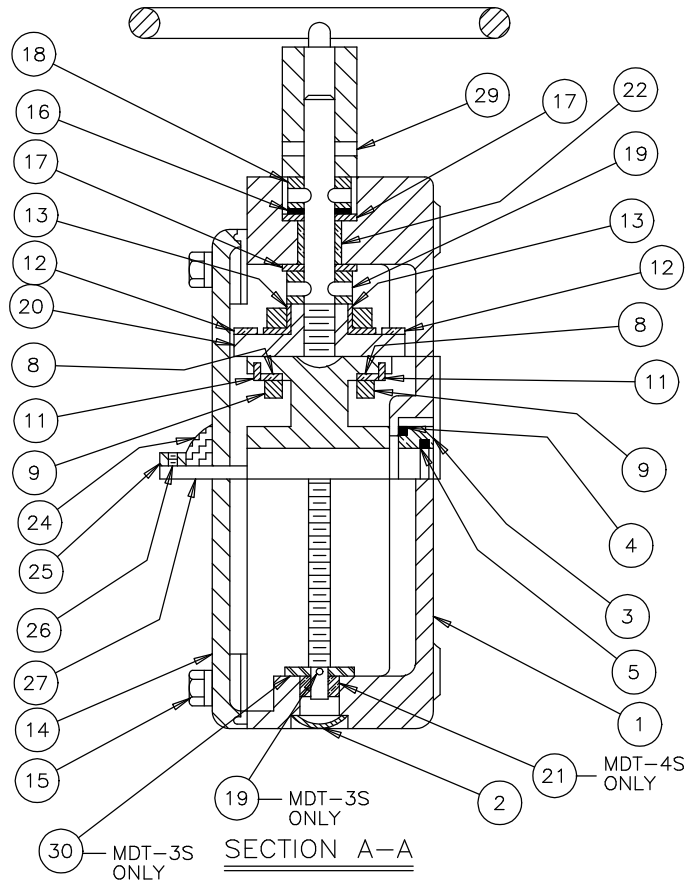
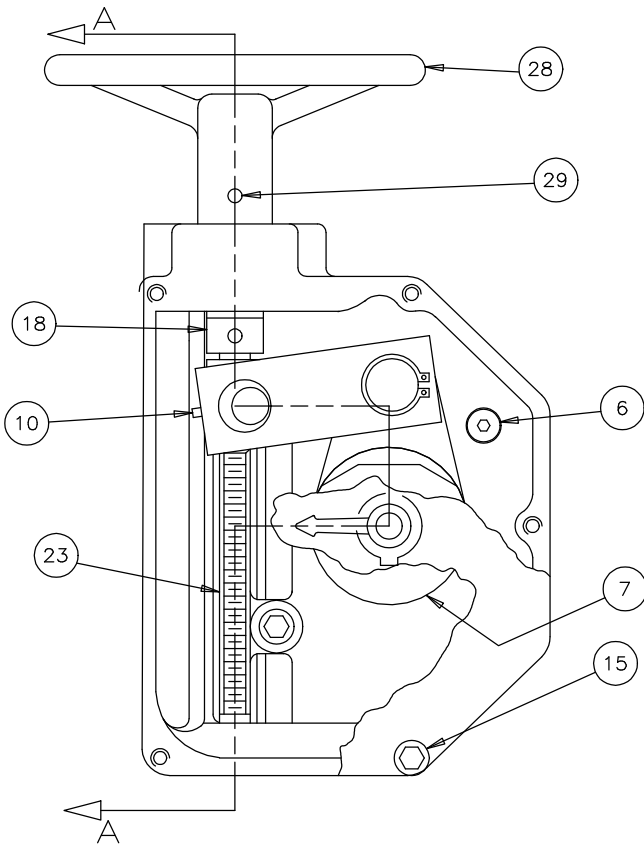


ITEM	DESCRIPTION	DESCRIPTION
1	HOUSING	CAST IRON ASTM A126 CLASS B
2	EXP. PLUG	STAINLESS STEEL TYPE 304
3	INSERT	NORYL GRADE GFN3-780
4	O-RING	BUNA-N
5	O-RING	BUNA-N
6	CAPSCREW	ALLOY STEEL (ZINC PLATED)
7	LEVER	DUCTILE IRON ASTM A536 GRADE (65-45-12)
8	BEARING	SINTERED BRONZE
9	LINK	CARBON STEEL
10	SET SCREW	ALLOY STEEL
11	RET. RING	CARBON STEEL
12	SLIDER TUBE	CARBON STEEL
13	ECCENTRIC BRG	SINTERED IRON
14	COVER	CAST IRON ASTM A126 CLASS B
15	CAPSCREW	STAINLESS STEEL TYPE 304

ITEM	DESCRIPTION	DESCRIPTION
16	SHIM	CARBON STEEL
17	THRUST WASHER	SINTERED BRONZE MDT4S/ IRON MDT3S
18	THRUST COLLAR	CARBON STEEL
19	DRIVE PIN	ALLOY STEEL
20	SLIDER NUT	DUCTILE IRON ASTM A-536 GRADE 65-45-12
21	BEARING	NYLON (MDT-4S ONLY)
22	BEARING	SINTERED BRONZE
23	SHAFT	CARBON STEEL
24	GROMMET	NEOPRENE
25	INDCTR. ARROW	DIE CAST CHROME PLATED
26	SET SCREW	ALLOY STEEL
27	STUD FASTENER	CARBON STEEL
28	HANDWHEEL	CAST ALUMINUM
29	SPRING PIN	STAINLESS STEEL
30	FLANGE BRG.	SINTERED IRON



REV.	DATE	BY	DESCRIPTION	APP.
PRATT ® HENRY PRATT COMPANY AURORA, ILL.				
CROSS SECTION PARTS AND MATERIAL LIST MDT-3S & 4S ACTUATOR WITH HANDWHEEL				
SCALE		DATE		APP.
NONE		10-31-05		
DRAWN BY		CHECKED BY		
ES				
APPROVED		GA=BORDER		
DRWG. NO.		REV		A/C
GA-11500		o		