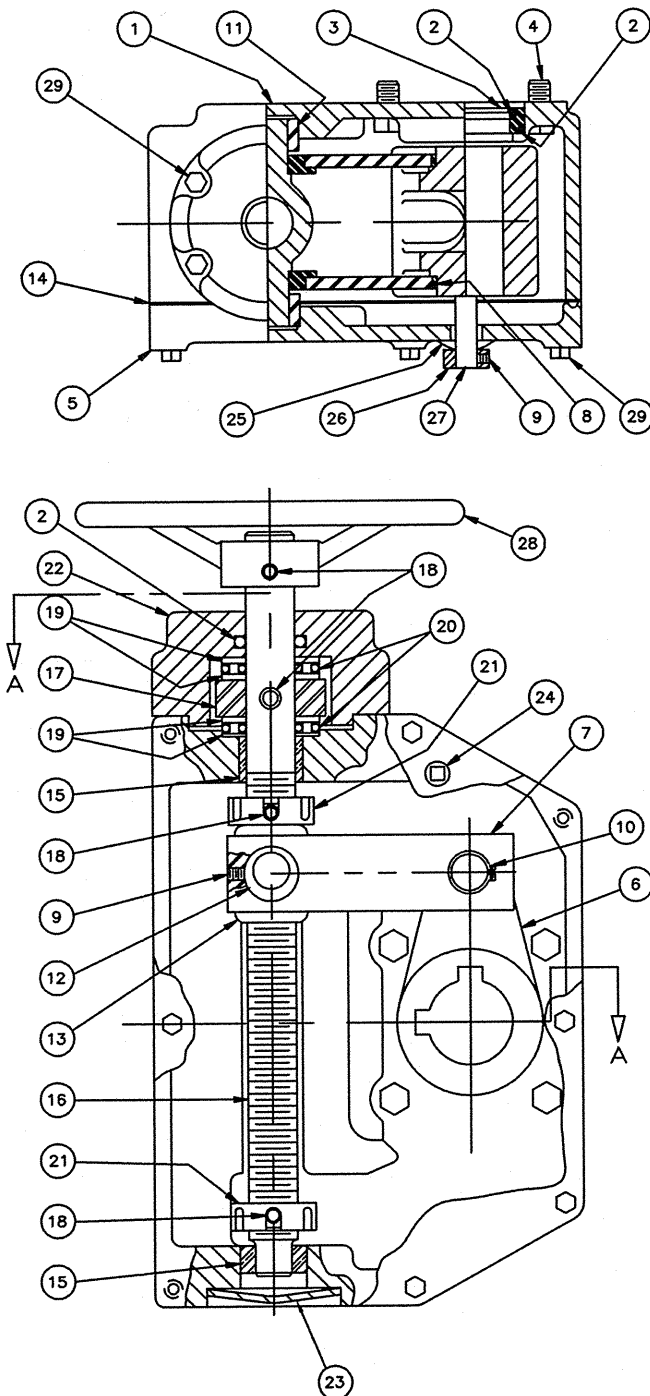


ITEM	DESCRIPTION	DESCRIPTION
1	HOUSING	CAST IRON ASTM A-48 CLASS 40
2	O-RING	RUBBER BUNA-N
3	INSERT	NORYL GRADE GFN3-780
4	CAPSCREW	ALLOY STEEL
5	COVER	CAST IRON ASTM A-48 CLASS 40
6	LEVER	DUCTILE IRON ASTM A-536 GRADE 80-60-03
7	LINK	CARBON STEEL
8	LINK BEARING	"DU" BEARING MATERIAL
9	SET SCREW	ALLOY STEEL
10	RETAINING RING	CARBON SPRING STEEL
11	SLIDE BLOCK	ALUMINUM BRONZE
12	ECCENTRIC BEARING	SINTERED METAL
13	SLIDER NUT	DUCTILE IRON ASTM A-536 GRADE 80-60-03
14	GASKET	NEOPRENE RUBBER

ITEM	DESCRIPTION	DESCRIPTION
15	BEARING	SINTERED BRONZE
16	SHAFT	CARBON STEEL AISI 12L14
17	THRUST COLLAR	CARBON STEEL
18	SPRING PIN	STAINLESS STEEL TYPE 420
19	THRUST RACE	HARDENED STEEL
20	ROLLER BEARING	HARDENED STEEL
21	COLLAR	DUCTILE IRON ASTM A-536 GRADE 80-60-03
22	ADAPTER	CAST IRON ASTM A-48 CLASS 40
23	EXPENSION PLUG	STAINLESS STEEL TYPE 304
24	PIPE PLUG	MALLEABLE IRON (GALVANIZED)
25	GROMMET	NEOPRENE
26	INDICATOR ARROW	DIE CAST (CHROME PLATED)
27	STUD FASTENER	CARBON STEEL
28	HANDWHEEL	ALUMINUM
29	CAPSCREW	CARBON STEEL



REV	DATE	BY	DESCRIPTION	APP
PRATT HENRY PRATT COMPANY AURORA, ILL.				
CROSS SECTION PARTS AND MATERIAL LIST MDT-5 HANDWHEEL ACTUATOR				
SCALE NONE		DATE 5-16-06		
DRAWN BY ES		CHECKED BY <i>RCB</i>		
APPROVED		GA=BORDER		
DRWG. NO.	GA-11566	REV 0	A/C	