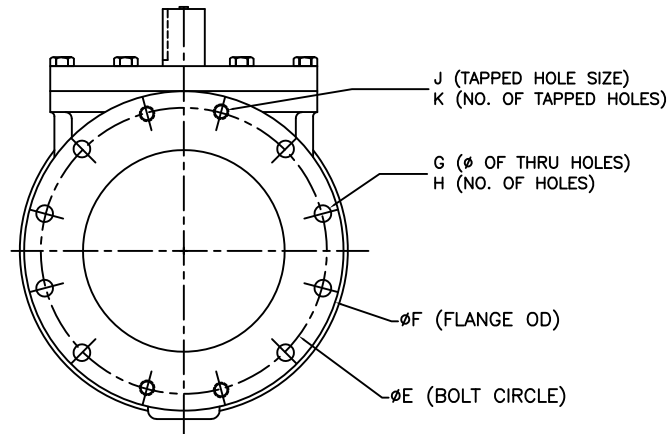
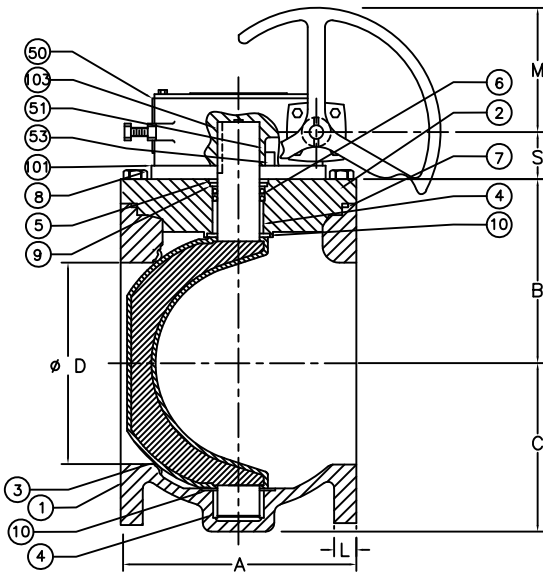
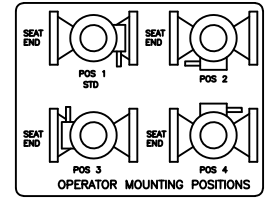
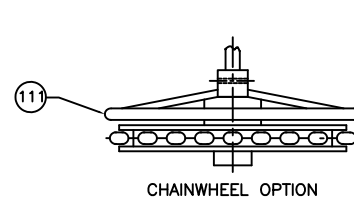
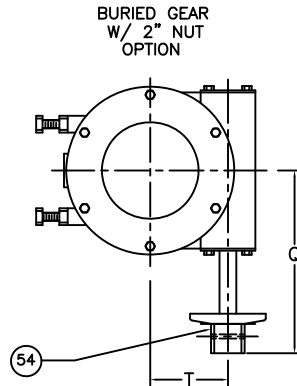
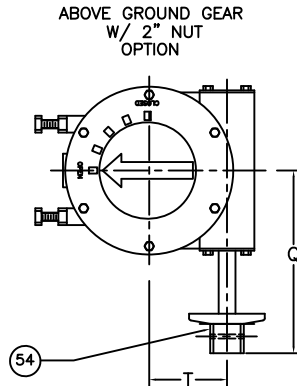
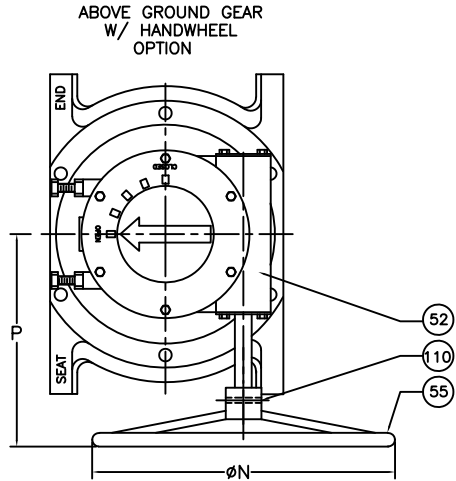


SIZE	RATIO	# OF TURNS	VALVE SIZE	GEAR SIZE	A	B	C	D	E	F	G	H	J	K	L	M	N	P	Q	S	T
M1	30:1	7 1/2	2.5	M1	7.5	3.41	3.50	2.5	5.50	7.00	0.75	4	--	--	0.69	3	6	7.63	6.56	2.00	2.00
M3	30:1	7 1/2	3	M1	8	3.41	3.75	3	6.00	7.50	0.75	4	--	--	0.75	3	6	7.63	6.56	2.00	2.00
M5	50:1	12 1/2	4	M3	9	4.38	4.50	4	7.50	9	0.75	6	0.63	2	0.94	3	6	9.50	8	2.00	2.56
M8	80:1	20	5	M3	10	5.63	5.75	5	8.50	10	0.88	6	0.75	2	0.94	3	6	9.50	8	2.00	2.56
			6	M3	10.50	5.63	5.75	6	9.50	11	0.88	6	0.75	2	1	3	6	9.50	8	2.00	2.56
			8	M5	11.50	7.56	7.63	8	11.75	13.50	0.88	6	0.75	2	1.13	6	12	11.25	8	2.25	3.16
			10	M8	13	9.25	8.88	10	14.25	16	1	8	0.88	4	1.19	6	12	11.63	10	2.00	4.63
			12	M8	14	10.88	10	12	17.00	19	1	8	0.88	4	1.25	6	12	11.63	10	2.00	4.63



\*RISER RING IS ONLY ON 2-1/2" TO 8" VALVE

ITEM	QTY	DESCRIPTION	MATERIAL
111	1	CHAINWHEEL	DUCTILE IRON
110	1	SPRING PIN	STEEL
103	1	KEY	STEEL
*101	1	RISER RING	STEEL
55	1	HANDWHEEL	DUCTILE IRON
54	1	2" NUT	DUCTILE IRON
53	2	SLEEVE BEARING	BRONZE
52	1	WORM GEAR	STEEL
51	1	QUAD GEAR	DUCTILE IRON
50	1	HOUSING	DUCTILE IRON
10	2	GRIT SEAL	PTFE
9	1	SEAL RETAINING RING	BRASS
8	AR	H.H. CAP SCREW	<input type="checkbox"/> STEEL <input type="checkbox"/> STN. STEEL
7	1	O-RING	ELAS AS SPEC.
6	2	U-CUP SEAL	ELAS AS SPEC.
5	1	SNAP RING	SPRING STEEL
4	2	SLEEVE BEARING	STN. STEEL
3	1	PLUG	ELASTOMER AS SPEC. DUCTILE IRON
2	1	CAP	CAST IRON
1	1	BODY	CAST IRON

DATE	REVISIONS	BY	CHK
05/12	CORRECTION IN "B" & "S" DIM. (EOP# 584)	AA	AA
07/01/13	ADDED ITEM 10 AND BOM UPDATE	JC	JC
08/17/13	Q.M. STANDARDIZATION ITEM 10, NEW 8	AA	AA
08/17/13	ERR# 23 & 3 DIM TABLE	AA	AA
10/01/13	ADD AG GEAR W/NUT OPT.	JL	JL
11/04/18	UPDATE GEAR INFO & ITEMS	DCJ	JL

BY	CR	DATE	10/95	SCALE	NONE
CHK'D	AJ	DIM.			INCHES
TITLE:					
FIG. 601 MPV 2-1/2" TO 12" FLANGED, GEAR OPERATED, W/HANDWHEEL, 2" NUT, OR CHAINWHEEL OPTION					
DWG. NO. HP49110					