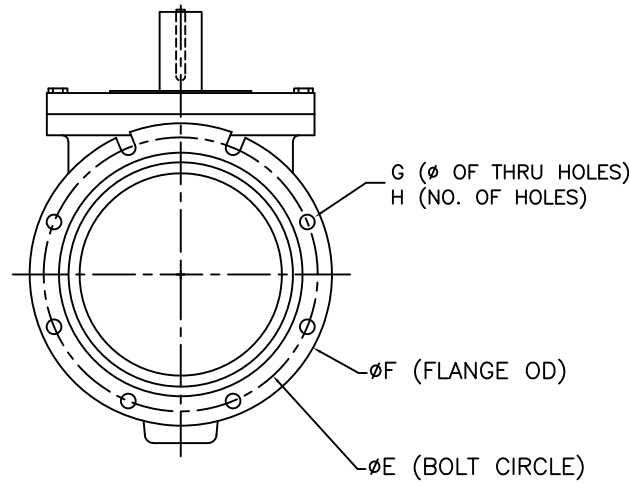
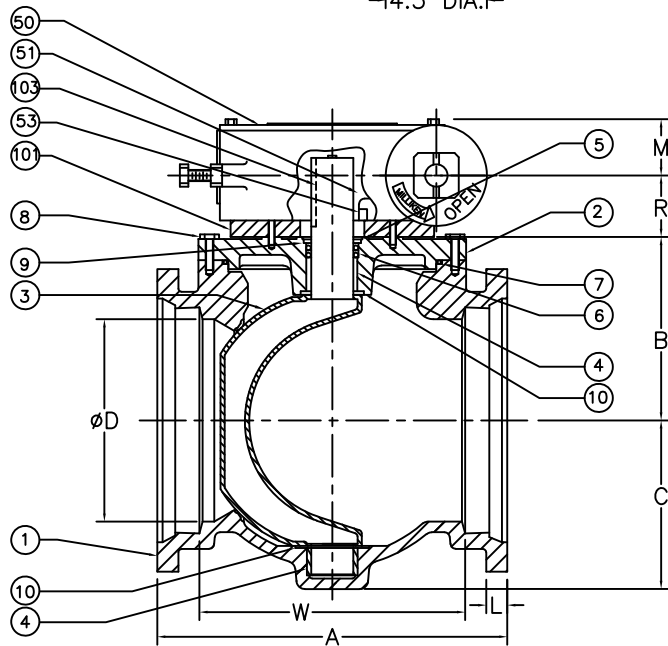
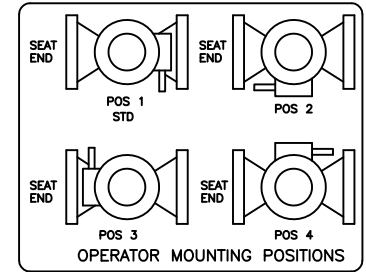
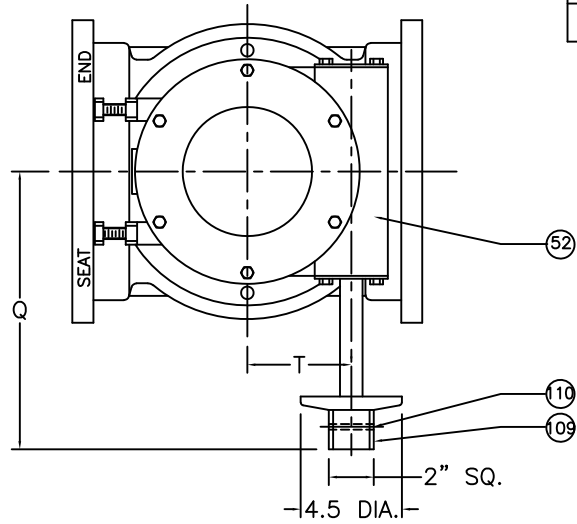


SIZE	RATIO	# OF TURNS	VALVE SIZE	GEAR SIZE	A	B	C	D	E	F	G	H	L	M	Q	R	T	W
M1	30:1	7 1/2																
M3	30:1	7 1/2	3	M1	11.50	3.41	3.84	3	6.19	7.69	0.75	4	0.94	2.25	6.56	2.00	2.00	6.50
M5	50:1	12 1/2	4	M3	14.25	4.38	4.50	4	7.50	9.00	0.88	4	1	2.25	8	2.00	2.56	9.25
M8	80:1	20	6	M3	15.75	5.63	5.75	6	9.50	11.13	0.88	6	1.06	2.25	8	2.00	2.56	10.75
			8	M5	17.38	7.56	7.63	8	11.75	13.38	0.88	6	1.13	2.25	8	2.25	3.16	12.38
			10	M8	19.38	9.25	8.88	10	14	15.63	0.88	8	1.19	2.72	10	2.00	4.63	14.38
			12	M8	20.75	10.88	10	12	16.25	17.94	0.88	8	1.25	2.72	10	2.00	4.63	15.75



*RISER RING IS ONLY ON 3" TO 8" VALVE

110	1	SPRING PIN	STEEL
109	1	2" NUT	DUCTILE IRON
103	1	KEY	STEEL
*101	1	RISER RING	STEEL
53	2	SLEEVE BEARING	BRONZE
52	1	WORM GEAR	STEEL
51	1	QUAD GEAR	DUCTILE IRON
50	1	HOUSING	DUCTILE IRON
10	2	GRIT SEAL	PTFE
9	1	SEAL RETAINING RING	BRASS
8	AR	H.H. CAP SCREW	<input type="checkbox"/> STEEL <input type="checkbox"/> STN. STEEL
7	1	O-RING	ELAS AS SPEC.
6	2	U-CUP SEAL	ELAS AS SPEC.
5	1	SNAP RING	SPRING STEEL
4	2	SLEEVE BEARING	STN. STEEL
3	1	PLUG ^{ELASTOMER} AS SPEC.	DUCTILE IRON
2	1	CAP	CAST IRON
1	1	BODY	CAST IRON

ITEM	QTY	DESCRIPTION	MATERIAL
PRATT			
DATE	REVISIONS	BY	CHK'D
01/10/15	GENERAL REVISION	JCF	JCF
03/02/18	UPDATED TITLE BLOCK	RFF	RFF
03/05/18	DRAWING STANDARDIZATION	DDC	DDC
TITLE:		SCALE	NONE
DATE		02/23/15	DIM. INCHES
BY		AA	
CHK'D		JON COPLAN	
FIG. 600 MPV MJE 3" TO 12" GEAR OPERATED W/2" NUT			
DWG. NO.		HP49012	