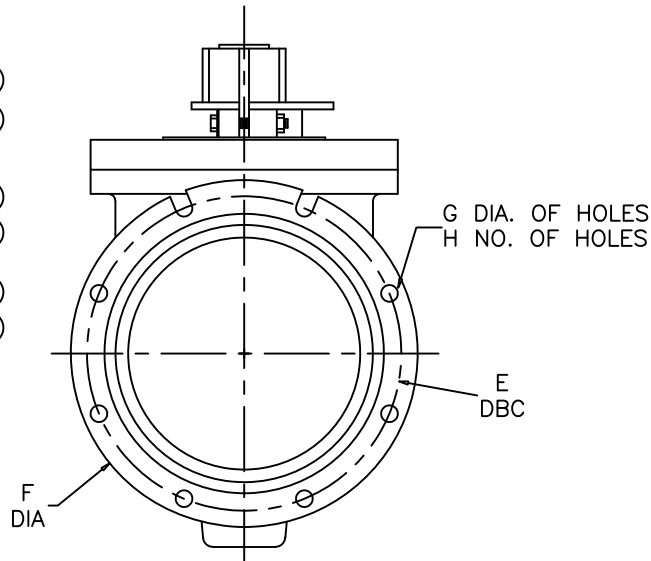
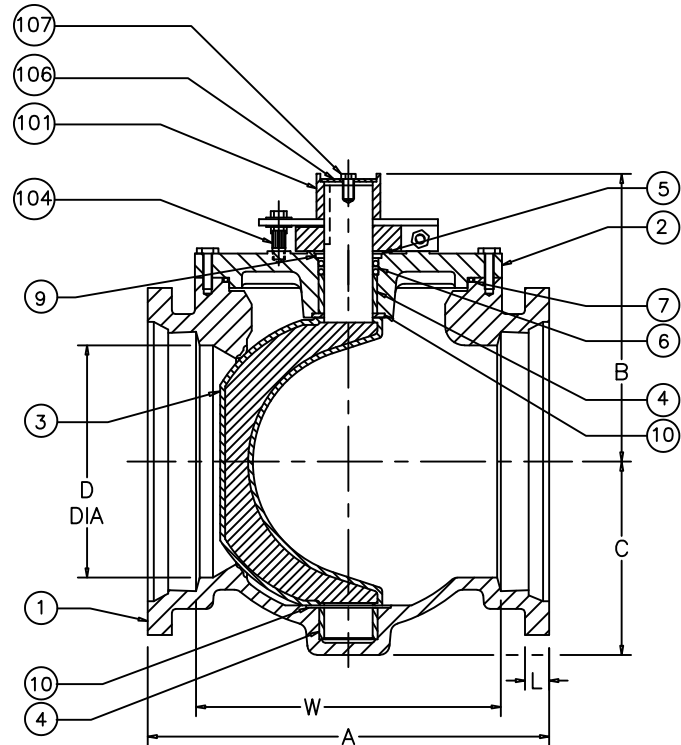
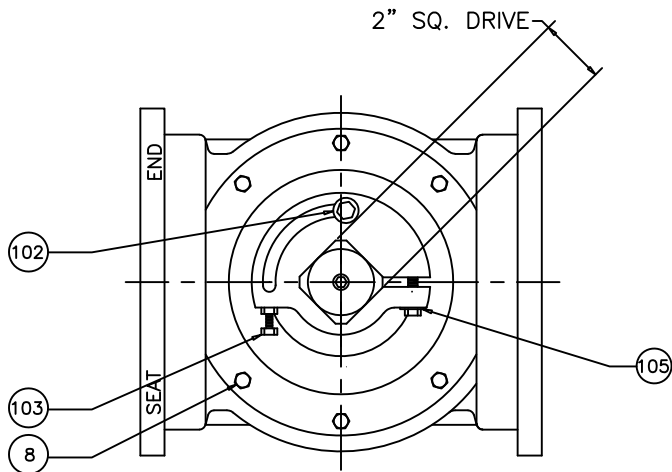


VALVE SIZE	A	B	C	D	E	F	G	H	L	W
3	11.50	6.19	3.75	3	6.19	7.69	0.75	4	0.94	6.50
4	14.25	7.25	4.50	4	7.50	9.00	0.88	4	1	9.25
6	15.75	8.38	5.75	6	9.50	11.13	0.88	6	1.06	10.75
8	17.38	10.69	7.63	8	11.75	13.38	0.88	6	1.13	12.38



107	1	CAP SCREW	STL/ZINC
106	1	RETAINING WASHER	STL/ZINC
105	1	TORQUE ADJ. BOLT	STL/ZINC
104	1	BODY STOP	STL/ZINC
103	1	ADJ. CLOSE STOP	STL/ZINC
102	1	ADJ. OPEN STOP	STL/ZINC
101	1	TORQUE COLLAR	DUCTILE IRON
10	2	GRIT SEAL	PTFE
9	1	SEAL RETAINING RING	BRASS
8	AR	H.H. CAP SCREW	<input type="checkbox"/> STEEL <input type="checkbox"/> STN. STEEL
7	1	O RING	ELAS AS SPEC.
6	2	U CUP SEAL	ELAS AS SPEC.
5	1	SNAP RING	SPRING STEEL
4	2	SLEEVE BEARING	STN. STEEL
3	1	PLUG ELASTOMER AS SPEC.	DUCTILE IRON
2	1	CAP	A 126 CL B
1	1	BODY	A 126 CL B
ITEM	QTY	DESCRIPTION	MATERIAL

ISSUE #	PRATT		BY	DATE	SCALE
			CR	7/97	NONE
		CHK'D		DIMENSIONS INCHES	
DATE	REVISIONS		BY	CHK	TITLE:
1	ORIGINAL DWG. BY JD ON 4/89				3"-8" PLUG VALVE, MJ ENDS, WRENCH OPERATED
2	10/93 CHANGED STEM TO SINGLE DIA.		CR	CR	
3	12/94 ADDED KEYWAY VIEW		CR	CR	
4	7/97 REDRAWN ON CADD		CR	CR	
5	1/99 REDID ITEMS 10-107 ROTATED OPEN STOP 90 DEGREES ADD CAP SCREW 107		CR	CR	
6	12/99 ITEM 8 WAS BRONZE		CR	CR	
7	08/12 REMOVE GEARBOX POSITION CHART		AA	AA	
8	05/13 CORRECTION IN "F" DIM [ECR# 644]		AA	AA	
8	05/13 UPDATE LOGO		DCC	JCL	DWG. NO. HP49013