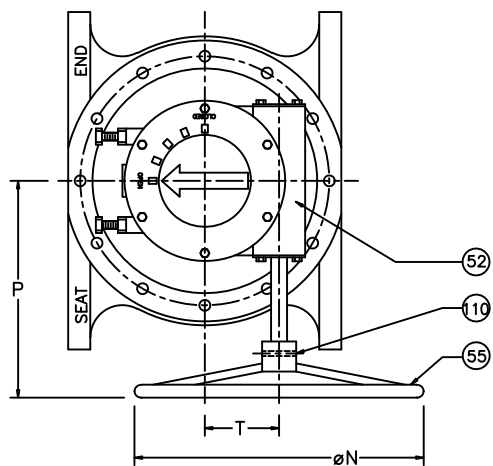
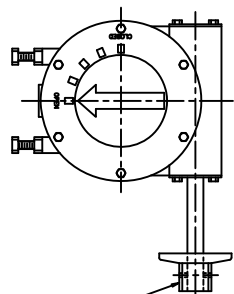


VALVE SIZE	GEAR SIZE	A	B	C	D	E	F	G	H	J	K	L	N	P	T	R
14	M8	17	12.56	13	14	18.75	21	1.13	8	1	4	1.38	18	11.60	4.63	2.0
16	M8	17.75	13.81	14	16	21.25	23.50	1.13	8	1	8	1.5	18	11.60	4.63	2.0
18	M8	21.50	14.29	15	18	22.75	25	1.25	8	1.13	8	1.56	18	11.60	4.63	2.0
20	M8	23.50	15.63	16	20	25	27.50	1.25	12	1.13	8	1.69	18	11.60	4.63	2.0

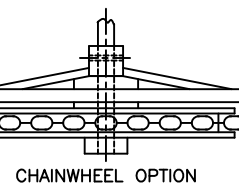
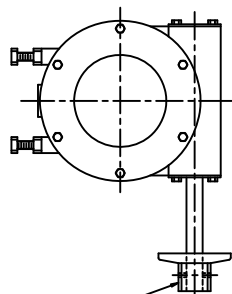
ABOVE GROUND GEAR
W/ HANDWHEEL
OPTION



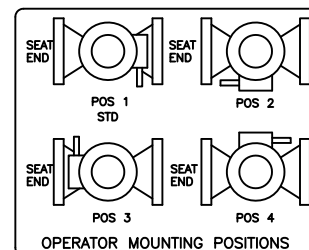
ABOVE GROUND GEAR
W/ 2" NUT OPTION



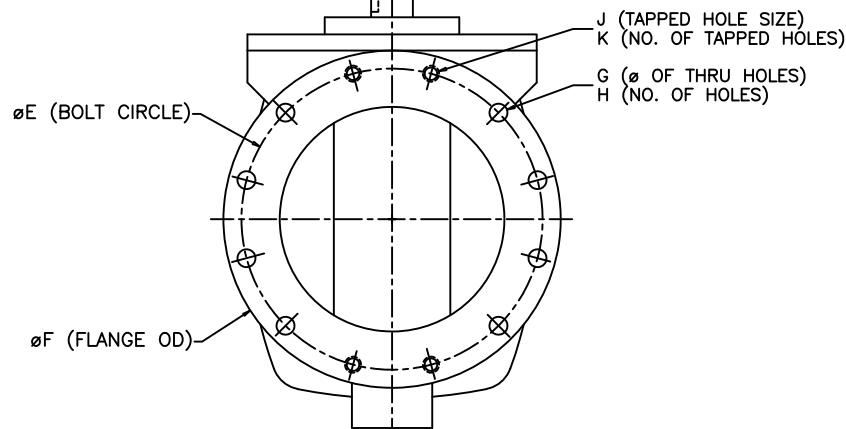
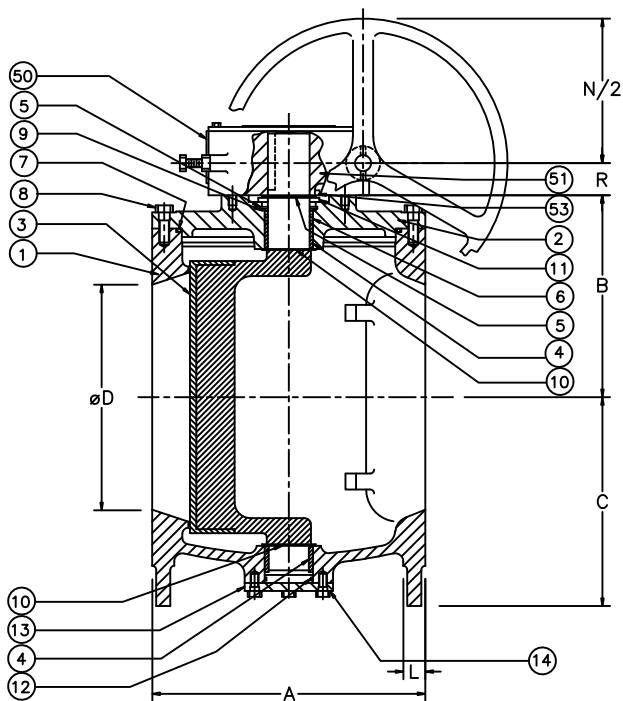
BURIED GEAR
W/ 2" NUT OPTION



CHAINWHEEL OPTION



OPERATOR MOUNTING POSITIONS



111	1	CHAINWHEEL	DUCTILE IRON
110	1	SPRING PIN	SPRING STEEL
55	1	HANDWHEEL	DUCTILE IRON
54	1	2" NUT	DUCTILE IRON
53	2	SLEEVE BEARING	BRONZE
52	1	WORM GEAR	STEEL
51	1	QUADRANT	DUCTILE IRON
50	1	GEAR OPERATOR	
14	AR	H.H.CAP SCREW	<input type="checkbox"/> STEEL <input type="checkbox"/> STN. STEEL
13	1	TRUNION COVER	CAST IRON
12	1	O RING	ELAS. AS SPEC.
11	1	SUPPORT WASHER	STEEL
10	2	GRIT SEAL	PTFE
9	1	SEAL RETAINING RING	BRASS
8	AR	H.H.CAP SCREW	<input type="checkbox"/> STEEL <input type="checkbox"/> STN. STEEL
7	1	O RING	ELAS. AS SPEC.
6	2	U CUP SEALS	ELAS. AS SPEC.
5	2	SNAP RING	SPRING STEEL
4	2	SLEEVE BEARING	STN. STEEL
3	1	PLUG	ELASTOMER AS SPEC. DUCTILE IRON
2	1	CAP	A126 CL B
1	1	BODY	A126 CL B
ITEM	QTY.	DESCRIPTION	MATERIAL
ISSUE NUM.	PRATT		BY CR DATE 01/96 SCALE NONE
DATE	REVISIONS	BY/CHK	CHK'D DIMENSIONS INCHES
2	3/06 CHG 18" H&K TO 8"	FS/FS	TITLE:
3	2/10 CHG ITEM 50 TO DUCTILE IRON [ECR# 252]	FS/FS	FIG. 601 14"-20" MILLCENTRIC PLUG VALVE, FLANGED, GEAR OPERATED w/HANDWHEEL, 2" NUT, OR CHAINWHEEL OPTION
4	2/13 BOM MAT. LIST UPDATED	AA/AA	
5	3/13 CORRECTION TO "L" DIM ON 14" [ECR# 586]	AA/AA	
6	5/14 REVISED 20" VALVE DIM	AA/AA	
7	9/17 UPDATED TITLE BLOCK, GEAR SIZES, AND DIMS M & P	JCL/JL	
8	3/18 ADDED AG GEAR W/ 2" NUT OPTION	JCL/JL	DWG. NO. HP49069
9	6/18 UPDATED DRAWING	LHF/DK	