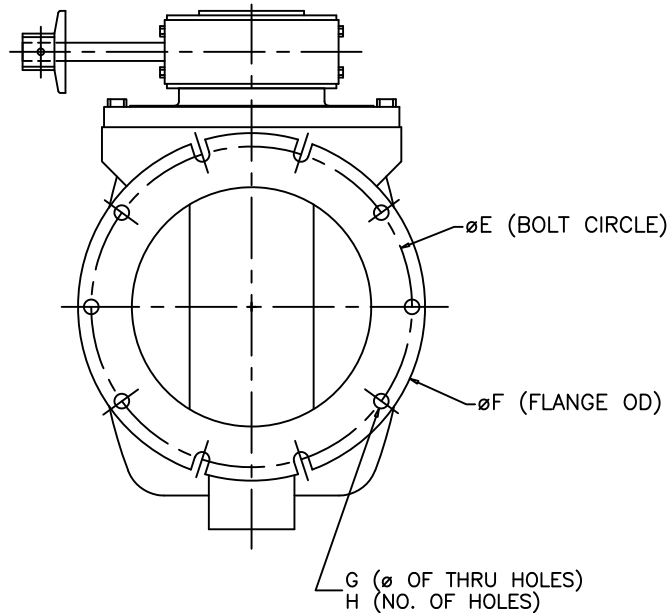
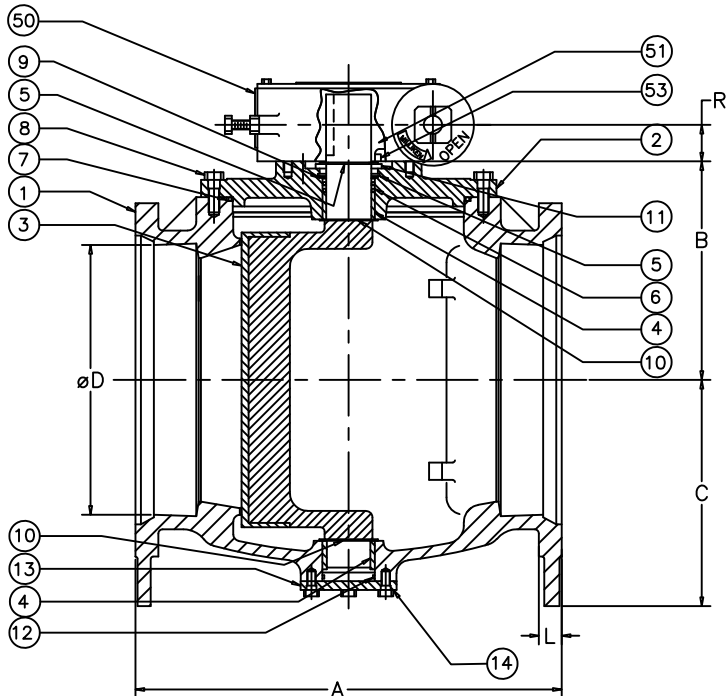
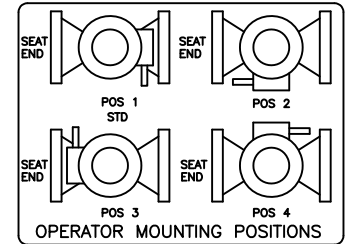
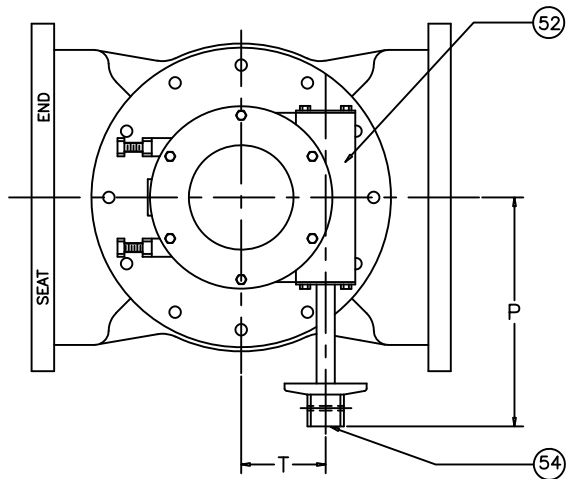


VALVE SIZE	GEAR SIZE	A	B	C	D	E	F	G	H	L	P	R	T
14	M8	24.50	12.56	13	14	18.75	20.31	0.88	6	1.31	11.60	2.0	4.63
16	M8	27.25	13.81	14	16	21	22.56	0.88	10	1.38	11.60	2.0	4.63
18	M8	29.25	14.29	15	18	23.25	24.84	0.88	10	1.44	11.60	2.0	4.63
20	M8	31	15.63	16	20	25.50	27.06	0.88	12	1.50	11.60	2.0	4.63



54	1	2" NUT	DUCTILE IRON
53	2	SLEEVE BEARING	BRONZE
52	1	WORM GEAR	STEEL
51	1	QUADRANT	DUCTILE IRON
50	1	GEAR OPERATOR	
14	AR	H.H.CAP SCREW	<input type="checkbox"/> STEEL <input type="checkbox"/> STN. STEEL
13	1	TRUNION COVER	CAST IRON
12	1	O RING	ELAS. AS SPEC.
11	1	SUPPORT WASHER	STEEL
10	2	GRIT SEAL	PTFE
9	1	SEAL RETAINING RING	BRASS
8	AR	H.H.CAP SCREW	<input type="checkbox"/> STEEL <input type="checkbox"/> STN. STEEL
7	1	O RING	ELAS. AS SPEC.
6	2	U CUP SEALS	ELAS. AS SPEC.
5	2	SNAP RING	SPRING STEEL
4	2	SLEEVE BEARING	STN. STEEL
3	1	PLUG ELASTOMER AS SPEC.	DUCTILE IRON
2	1	CAP	CAST IRON
1	1	BODY	CAST IRON
ITEM	QTY.	DESCRIPTION	MATERIAL
ISSUE NUM.	PRATT		BY CR DATE 10/95 SCALE NONE
			CHK'D DIMENSIONS INCHES
DATE	REVISIONS	BY	CHK
1 06/98	REMOVED 24"-48" TO DWG# S49726	CR	CR
2 08/17	UPDATED TITLE BLOCK ADD SS HDWR OPTION	JCL	JL
3 11/17	UPDATED GEAR SIZE REMOVED REFERENCE NOTES	JCL	JL
4 06/18	UPDATED DRAWING	LF	DK
		TITLE: FIG. 600 14"-20" MILLCENTRIC PLUG VALVE, MJ ENDS, GEAR OPERATED w/ 2" NUT	
		DWG. NO. HP49295	