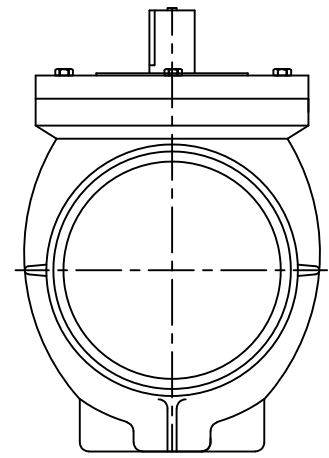
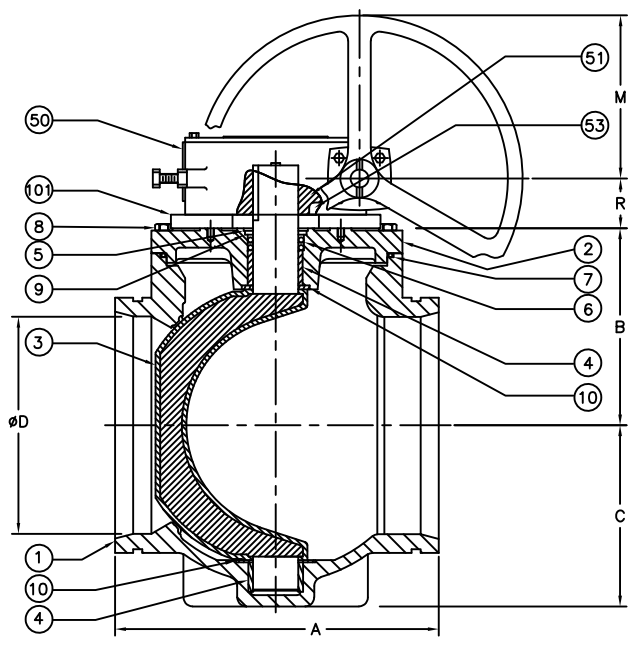
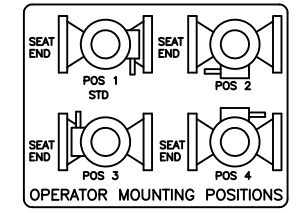
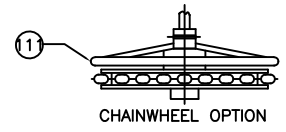
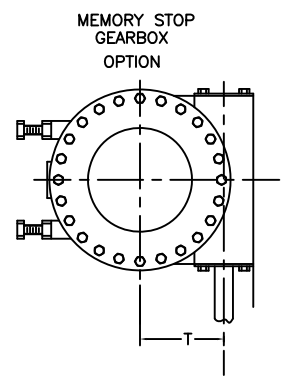
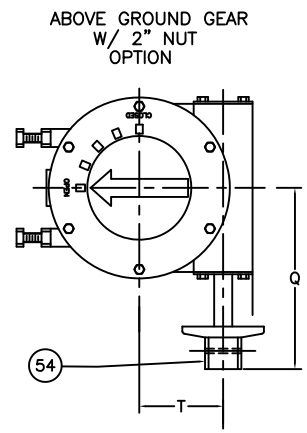
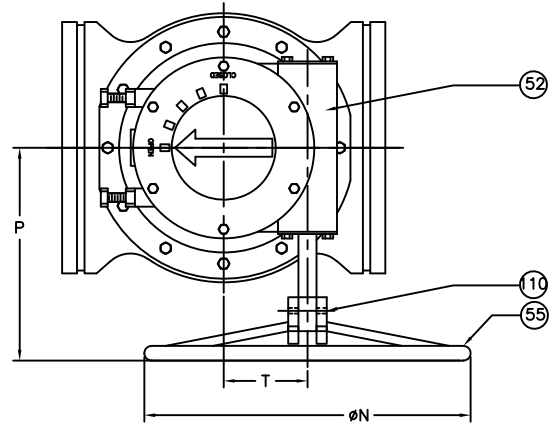


SIZE	RATIO	# OF TURNS	VALVE SIZE	GEAR SIZE	DUCT. PIPE	A	STEEL PIPE	B	C	D	M	N	P	Q	R	T
M1	30:1	7 1/2	3	M1	9.06	8.5	3.41	3.75	3	3	6	7.63	6.56	2.00	2.00	
M3	30:1	7 1/2	4	M3	10.25	10.13	4.38	4.5	4	3	6	9.50	8.00	2.00	2.56	
M5	50:1	12 1/2	5	M3	N/A	12.38	5.75	5.75	5	3	6	9.50	8.00	2.00	2.56	
M8	80:1	20	6	M3	12.5	12.38	5.75	5.75	6	3	6	9.50	8.00	2.00	2.56	
			8	M5	14	13.88	7.63	7.63	8	6	12	11.25	8.00	2.25	3.16	
			10	M8	16.56	16.44	9.25	8.88	10	6	12	11.63	10.00	2.00	4.63	
			12	M8	18	18	10.88	10	12	6	12	11.63	10.00	2.00	4.63	
			14	M8	21.63	21.63	11.56	10	14	9	18	11.63	10.00	2.00	4.63	

FIG 606D
FIG 606S



*RISER RING IS ONLY ON 3" TO 8" VALVE

ITEM	QTY	DESCRIPTION	MATERIAL
111	1	CHAINWHEEL	DUCTILE IRON
110	1	SPRING PIN	STEEL
103	1	KEY	STEEL
*101	1	RISER RING	STEEL
55	1	HANDWHEEL	DUCTILE IRON
54	1	2" NUT	DUCTILE IRON
53	2	SLEEVE BEARING	BRONZE
52	1	WORMGEAR	STEEL
51	1	QUAD GEAR	DUCTILE IRON
50	1	HOUSING	DUCTILE IRON
10	1	GRIT SEAL	PTFE
9	2	SEAL RETAINING RING	BRASS
8	AR	H.H. CAP SCREW	STEEL/ZINC
7	1	O-RING	ELAS. AS SPEC.
6	2	U-CUP SEALS	ELAS. AS SPEC.
5	1	SNAP RING	SPRING STEEL
4	2	SLEEVE BEARING	STN. STEEL
3	1	PLUG ELASTOMER AS SPEC.	DUCTILE IRON
2	1	CAP	CAST IRON
1	1	BODY	DUCTILE IRON

ISSUE NUM.	DATE	REVISIONS	BY	CHK'D	DATE	SCALE	TITLE
1	12/11	REMOVE 14" VALVE SIZE [ECR# 545]	AA	AA	06/96	NONE	FIG. 606 MPV 3" TO 14"
2	05/13	STANDARDIZED B.O.M.	AA	AA			GROOVE ENDS, GEAR OPERATED W/HANDWHEEL OR 2" NUT MEMORY GEAR OPT.
3	05/14	ADDED 14"	AA	AA			
4	05/18	DWG. STANDARDIZATION	DCCK	DKL			
5	07/18	ADDED 14"	DKL	JL			

DWG. NO. HP49318