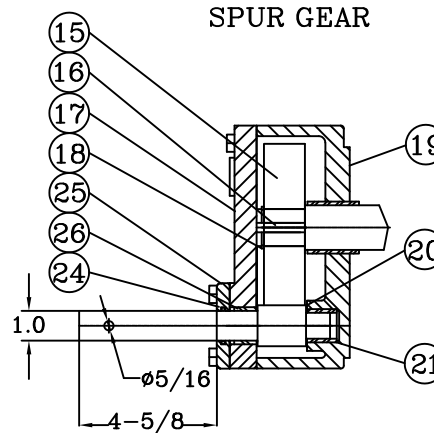
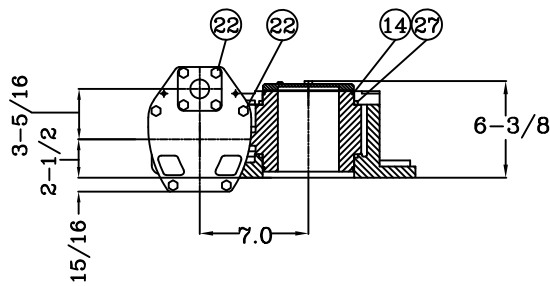
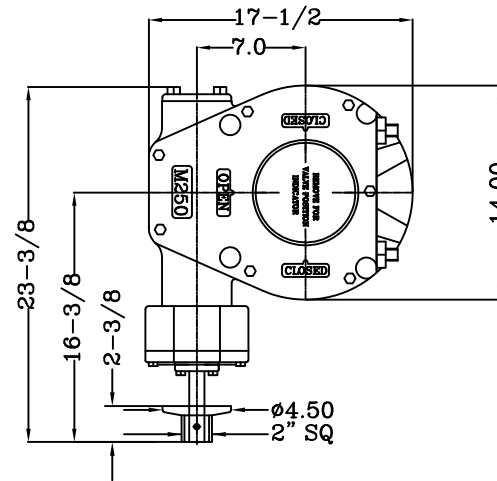
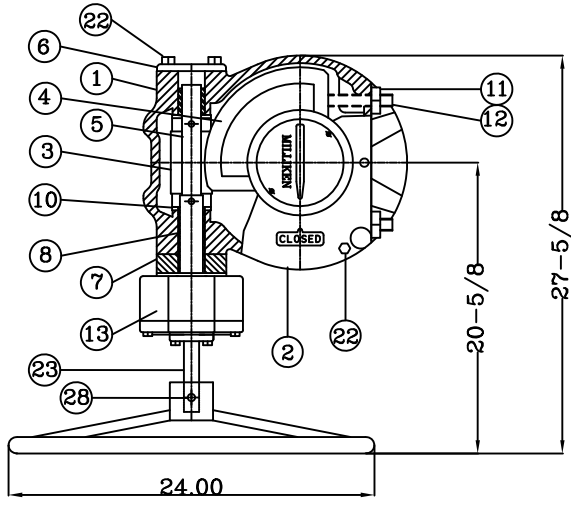


REFERENCE ONLY

ABOVE GROUND GEAR w/HANDWHEEL

BURIED SERVICE GEAR w/2" NUT



THIS DRAWING IS THE PROPERTY OF HENRY PRATT COMPANY AND MUST NOT BE USED IN ANY WAY PREJUDICIAL TO THEIR INTERESTS

28	1	SRRING PIN	SPRING STEEL	-
27	2	BEARING	BRONZE	ASTM B438
26	1	BEARING	BRONZE	ASTM B438
25	1	COVER	DUCTILE IRON	ASTM A536 Gr.65-45-12
24	1	O-RING	BUNA-N	-
23	1	GEAR STEM	STEEL	SAE 1045
22	AR	COVER SCREW	STEEL/ZINC	-
21	1	BEARING	BRONZE	ASTM B438
20	1	WASHER	STEEL	-
19	1	S5 HOUSING	DUCTILE IRON	ASTM A536 Gr.65-45-12
18	1	RING	STEEL	-
17	1	S5 COVER	DUCTILE IRON	ASTM A536 Gr.65-45-12
16	1	KEY	STEEL	SAE 1045
15	1	GEAR	STEEL	-
14	2	O-RING	BUNA-N	-
13	1	SPUR GEAR	DUCTILE IRON	ASTM A536 Gr.65-45-12
12	2	STOP LUG STUD	STEEL/ZINC	-
11	2	HEX NUT	STEEL/ZINC	-
10	2	BEARING	STEEL	-
8	5	BEARING	BRONZE	ASTM B438
7	1	SPACER	DUCTILE IRON	ASTM A536 Gr.65-45-12
6	1	SIDE COVER	DUCTILE IRON	ASTM A536 Gr.65-45-12
5	1	SHAFT	STEEL	SAE 1045
4	1	GEAR	DUCTILE IRON	ASTM A536 Gr.100-70-3
3	1	WORM GEAR	STEEL	SAE 4115
2	1	COVER	DUCTILE IRON	ASTM A536 Gr.65-45-12
1	1	HOUSING	DUCTILE IRON	ASTM A536 Gr.65-45-12

ITEM	QTY	DESCRIPTION	MATERIAL	DESIGNATION
		<b>PRATT</b>		BY: JC DATE: 09/21/09 SCALE: NONE
				CHKD. BY: AJ DIMENSION: INCHES
ISSUE NUMBER	DATE	REVISION	BY TITLE:	
1	02/03/11	REVISED TITLE BLOCK ADDED 100% PORT SIZES (ECR#4441)	RR	HENRY PRATT GEAR TYPE: M250
2	12/03/12	ADDED No. OF TURNS (ECR#641)	AA	24" & 30" PV STD. PORT
3	04/03/13	WEIGHT CHANGED FROM 196 LBS. TO 225 LBS.	JC	24" PV-100% PORT
			DWG. NO. HP49625	

APPROX. WEIGHT: 225 LB.

No. OF TURNS: 62-1/2