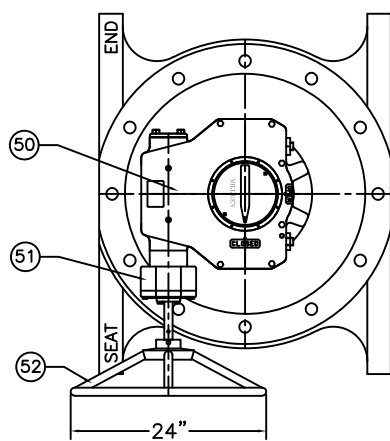
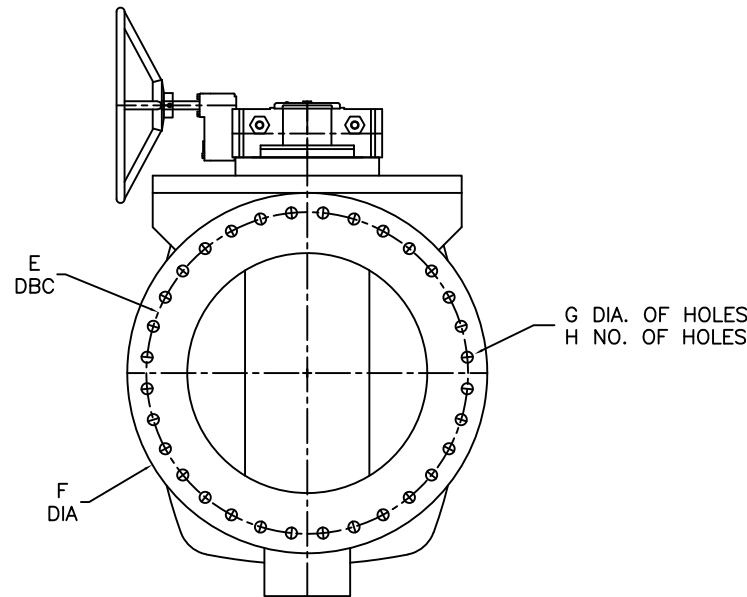
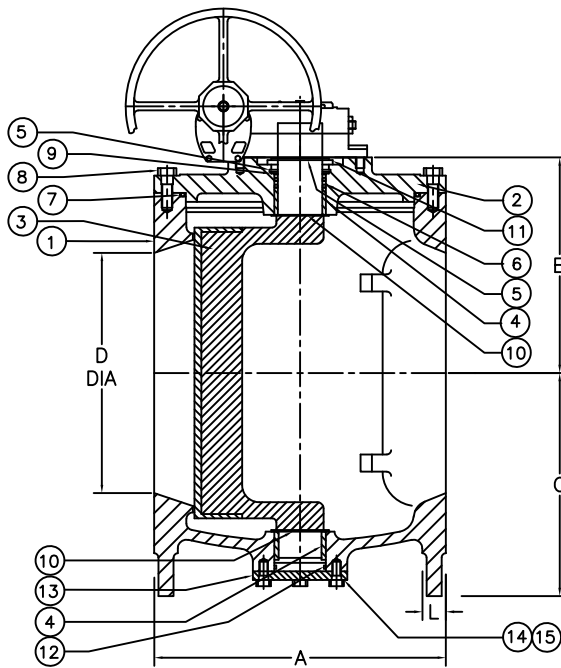
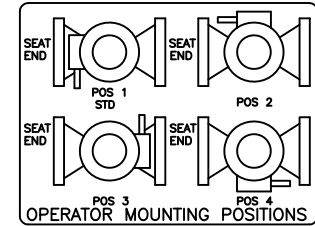
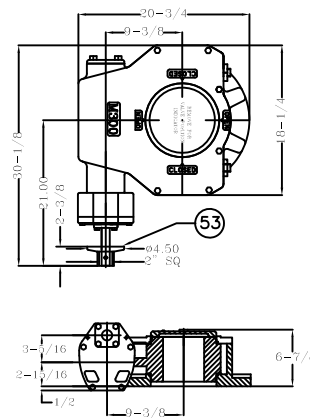


VALVE SIZE	A	B	C	D	E	F	G	H	L
36	60	27.63	29	36	42.75	46	1.63	32	2.38

ABOVE GROUND GEAR w/HANDWHEEL



BURIED SERVICE GEAR w/2" NUT



53	1	2" NUT OPTION	DUCTILE IRON		
52	1	HANDWHEEL OPTION	DUCTILE IRON		
51	1	SPUR GEAR	-		
50	1	GEAR OPERATOR	-		
15	AR	LOCKWASHER	<input type="checkbox"/> STEEL	<input type="checkbox"/> STN. STEEL	
14	AR	H.H. CAP SCREW	<input type="checkbox"/> STEEL	<input type="checkbox"/> STN. STEEL	
13	1	TRUNION COVER	CAST IRON		
12	1	O RING	ELAS. AS SPEC.		
11	1	SUPPORT WASHER	STEEL		
10	2	GRIT SEAL	PTFE		
9	1	SEAL RETAINING RING	BRASS		
8	AR	H.H. CAP SCREW	<input type="checkbox"/> STEEL	<input type="checkbox"/> STN. STEEL	
7	1	O RING	ELAS. AS SPEC.		
6	2	U CUP SEALS	ELAS. AS SPEC.		
5	2	SNAP RING	SPRING STEEL		
4	2	SLEEVE BEARING	STN. STEEL		
3	1	PLUG	ELASTOMER AS SPEC.	DUCTILE IRON	
2	1	CAP	CAST IRON		
1	1	BODY	CAST IRON		
ITEM	QTY.	DESCRIPTION	MATERIAL		
ISSUE NUM.			BY	DATE	SCALE
			JC	10/09	NONE
			CHK'D	DIMENSIONS	
				INCHES	
DATE	REVISIONS		BY		TITLE:
	1	9/14 ADDED D.I. MAT. TO PLUG	AA		
	2	8/17 REMOVED 42" VALVE SIZE	AA		
	3	1/19 EDITED MAT'L DESCRIPTION	BDS		
4	9/19 UPDATED POSITION CHART	RL		FIG. 601 36" MPV, FLANGED W/ M300 GEAR	
DWG. NO.			HP49857		