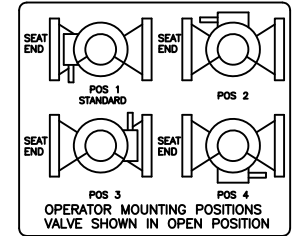


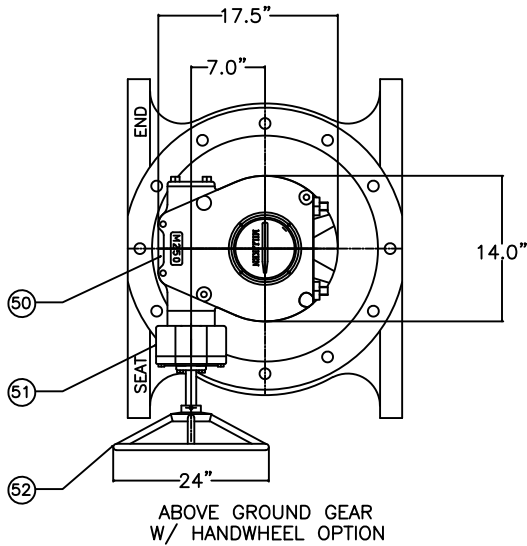
VALVE SIZE	A	B	C	D	E	F	G	H	L
24	42	19.38	21.63	24	29.50	32	1.38	20	1.88
30	51	23.44	24.75	30	36	38.75	1.38	28	2.13

REFERENCE ONLY

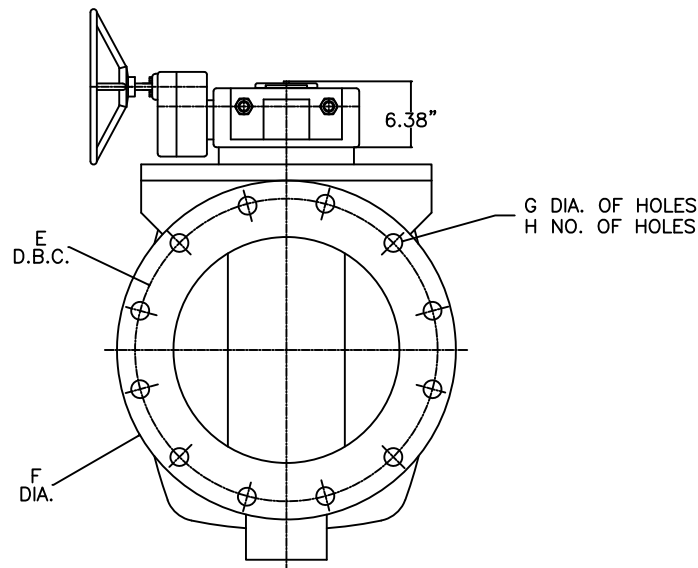
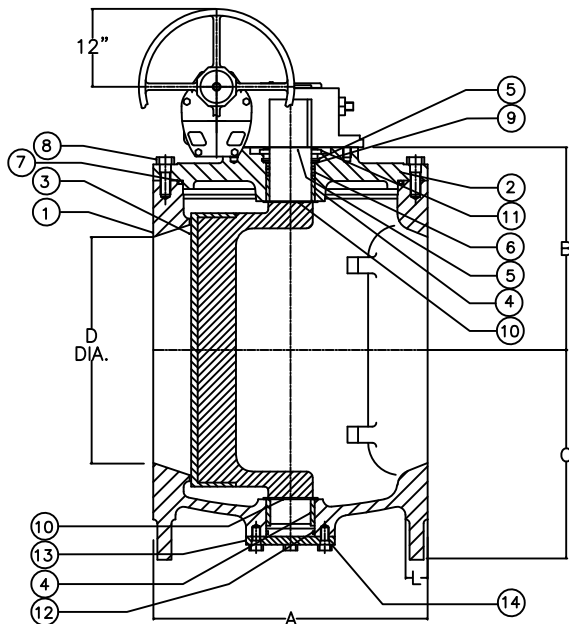
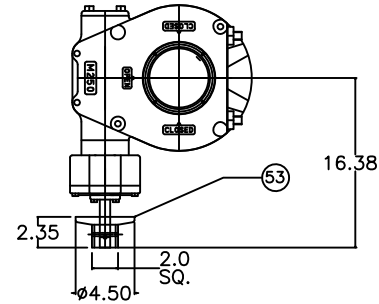


THIS DRAWING IS THE PROPERTY OF HENRY PRATT COMPANY AND MUST NOT BE USED IN ANY WAY PREJUDICIAL TO THEIR INTERESTS

DRAWINGS ARE FOR INFORMATION PURPOSES ONLY; PLEASE REQUEST CERTIFIED DRAWINGS BEFORE PREPARING PIPING DIAGRAMS



BURIED GEAR w/ 2" NUT OPTION



53	1	2" NUT OPTION	DUCTILE IRON	
52	1	HANDWHEEL OPTION	-	
51	1	SPUR GEAR	-	
50	1	GEAR OPERATOR		
14	AR	H.H.CAP SCREW	<input type="checkbox"/> STEEL	<input type="checkbox"/> STN. STEEL
13	1	TRUNION COVER	CAST IRON	
12	1	O RING	ELAS. AS SPEC.	
11	1	SUPPORT WASHER	STEEL	
10	2	GRIT SEAL	PTFE	
9	1	SEAL RETAINING RING	STEEL	
8	AR	H.H.CAP SCREW	<input type="checkbox"/> STEEL	<input type="checkbox"/> STN. STEEL
7	1	O RING	ELAS. AS SPEC.	
6	2	U CUP SEALS	ELAS. AS SPEC.	
5	2	SNAP RING	SPRING STEEL	
4	2	SLEEVE BEARING	STN. STEEL	
3	1	PLUG	ELASTOMER AS SPEC.	DUCTILE IRON
2	1	CAP	CAST IRON	
1	1	BODY	CAST IRON	
ITEM	QTY.	DESCRIPTION	MATERIAL	
		<b>PRATT</b>		BY CR
				DATE 09/99
				SCALE NONE
				CHK'D
				DIMENSIONS INCHES
REV.#	DATE	REVISIONS	BY	TITLE:
1	11/99	ITEM 3 WAS D.I. ITEM 4 WAS 316 S.S. ITEM 9 WAS BRASS	CR	FIG. 601
2	06/09	DELETED "MASTERGEAR" ADDED "M250TECR#155"	FS	24"-30" MILLCENTRIC PLUG VALVE, FLANGED, w/ M250 GEAR
3	07/14	CHANGED PLUG MAT. FROM C.I. INCLUDED D.I.	AA	
4	03/17	REMOVED C.I. FROM DWG	AA	DWG. NO. HP49859