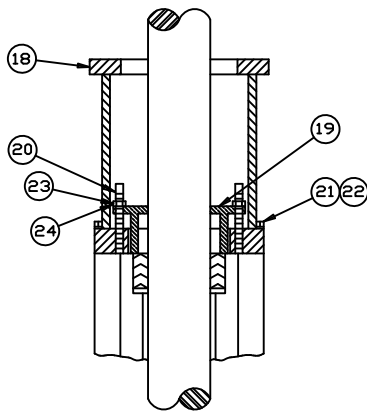
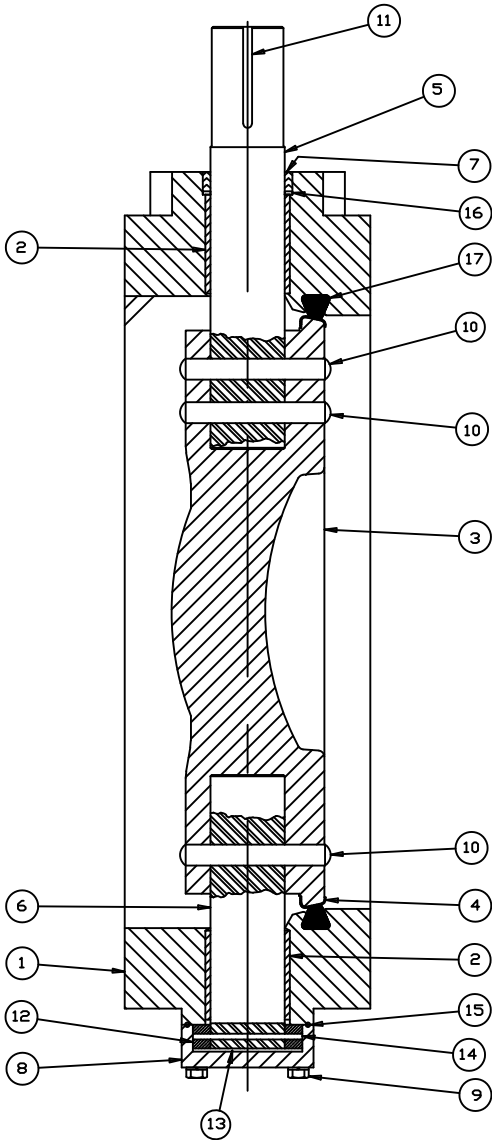


MATERIAL OPTIONS AS CHECKED



OPTIONAL  
REPLACEABLE PACKING BONNET  
ASSEMBLY



ITEM NO.	DESCRIPTION	MATERIALS	✓
1	BODY	CAST IRON ASTM A-126 CLASS B	
		DUCTILE IRON ASTM A-536 (65-45-12)	
2	BEARINGS	TEFLON LINED, FIBERGLASS BACKED	
3	DISC	DUCTILE IRON ASTM A-536 (65-45-12)	
4	DISC EDGE	STAINLESS STEEL TYPE 316	
5	TOP STUB SHAFT	STAINLESS STEEL ASTM A-276 TYPE 304	
		STAINLESS STEEL ASTM A-276 TYPE 316	
		STN. STL. A-564 TYPE 630 COND. H-1150	
		MONEL ASTM B-164 ALLOY 400	
6	BOTTOM STUB SHAFT	STAINLESS STEEL ASTM A-276 TYPE 304	
		STAINLESS STEEL ASTM A-276 TYPE 316	
		STN. STL. A-564 TYPE 630 COND. H-1150	
		MONEL ASTM B-164 ALLOY 400	
7	PACKING	RUBBER (BUNA-N)	
		RESILOSEAL W (EPDM)	
8	BOTTOM COVER	DUCTILE IRON ASTM A-536 (65-45-12)	
		CAST IRON ASTM A-126 CLASS B	
9	CAP SCREWS	CARBON STEEL	
		STAINLESS STEEL TYPE 304	
		STAINLESS STEEL TYPE 316	
10	SQUEEZE PINS	STAINLESS STEEL ASTM A-276 TYPE 304	
		STAINLESS STEEL ASTM A-276 TYPE 316	
		STN. STL. A-564 TYPE 630 COND. H-1150	
		MONEL ASTM B-164 ALLOY 400	
11	KEY	CARBON STEEL AISI 1045	
12	THRUST COLLAR	BRONZE ASTM B-505 ALLOY C93200	
13	THRUST COLLAR SHIMS	BRASS ALLOY C26000 HALF HARD (H02)	
14	SPRING PIN	STAINLESS STEEL TYPE 420	
15	O-RING	RUBBER (BUNA N)	
		RUBBER (EPDM)	
16	PACKING RETAINER	NYLON	
17	SEAT	RESILOSEAL R (BUNA-N)	
		RESILOSEAL W (EPDM)	
18	BONNET	CAST IRON ASTM A-48 CLASS 40	
19	PACKING GLAND	BRONZE ASTM B-584 ALLOY C86400	
20	PACKING GLAND STUD	STAINLESS STEEL TYPE 304	
21	CAP SCREWS	CARBON STEEL	
22	LOCKWASHERS	CARBON STEEL	
23	PACKING GLAND NUT	STAINLESS STEEL TYPE 304	
24	LOCTITE	GRADE CV	

10/19/17	JUR	UPDATED TITLE BLOCK	RF
4/22/16	DSL	UPDATED ORING MATL	RF
7-15-11	JTC	UPDATED MATERIAL	RCB
1-5-11	CEM	ADD MATERIAL OPTION	RCB
7-19-06	RCB	DELETED C.I. OPTION	PPS
4-6-06	CEG	ADDED DUCTILE OPTION	JR
REV	DATE	BY	DESCRIPTION
			APP.

**PRATT**  
Pneumatic

CROSS SECTION  
PARTS AND MATERIAL LIST  
24" TRITON-XR  
BUTTERFLY VALVE

SCALE NONE DATE 2-04-05

DRAWN BY AAT CHECKED BY ES

APPROVED GA=BORDER

DRWG. NO. GA-11337 REV 6 AC