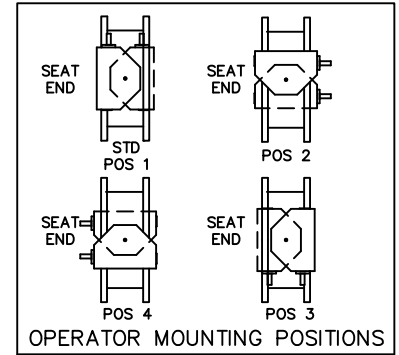
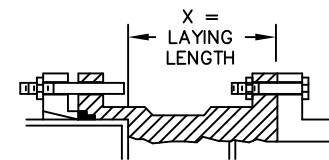
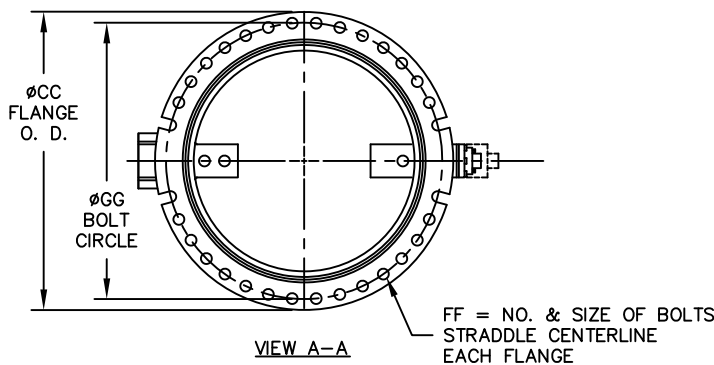
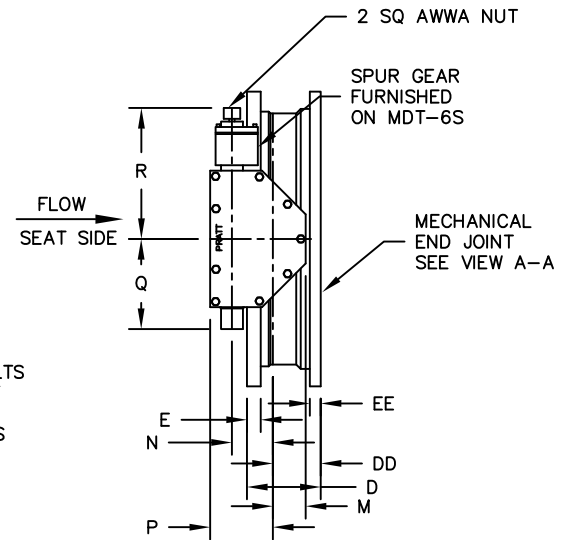
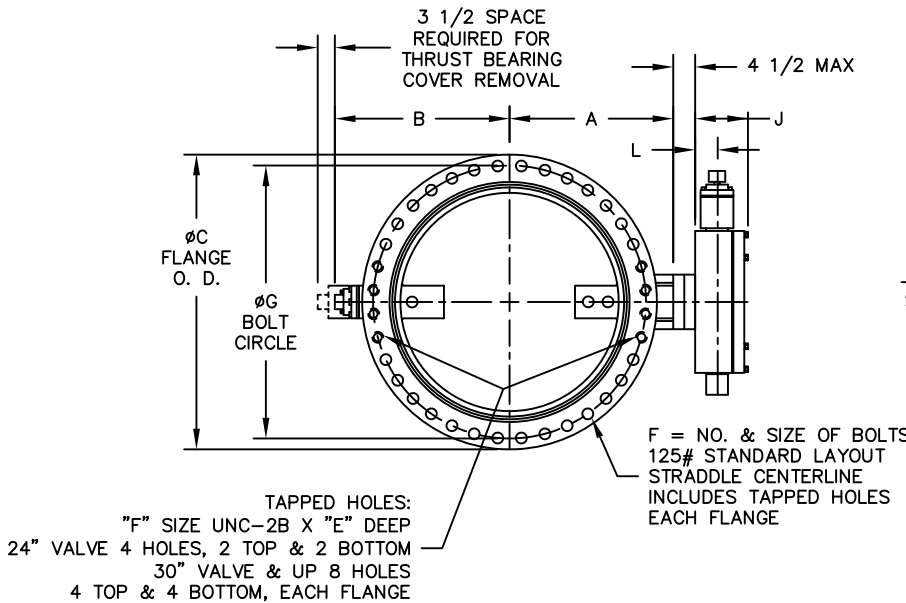


VALVE SIZE	A	B	C	CC	D	DD	E	EE	F	FF	G	GG	X
24	18-5/8	18-5/8	32	31-9/16	10-5/8	6-5/8	1-7/8	1-5/8	20/1-1/4	16/3/4	29-1/2	30	7-1/8
30	21-1/2	24-3/8	38-3/4	39	15	9	2-1/8	1-13/16	28/1-1/4	20/1	36	36-7/8	11
36	25-7/16	28-1/4	46	45-7/8	17	11	2-3/8	2	32/1-1/2	24/1	42-3/4	43-3/4	13

ACTUATOR SIZE	J	L	M	N	P	Q	R	NUMBER OF TURNS
MDT-4S	6-3/8	2-27/32	3-3/8	4	7-5/16	6-3/4	11-5/16	40
MDT-5	7-9/16	3-15/32	4-1/2	5-1/2	8-3/4	10	17	44
MDT-5S	8-5/16	3-15/16	5-1/2	7	10-1/2	15-15/16	19-7/8	136
MDT-6S	10-3/16	5-1/16	7	8-1/4	12-5/8	14-3/16	26-1/2	215



A. CHECK WITH FACTORY WHEN SELECTING ALTERNATE MIRROR ACTUATOR STYLES.



INSTALLATION DIAGRAM  
 BOLTS, NUTS, GLANDS  
 AND GASKETS FURNISHED  
 BY OTHERS

NOTES:

- ALL DIMENSIONS SHOWN IN INCHES.
- "D" DIMENSION  $\pm 1/8"$ .
- FOR BOLTS SMALLER THAN  $\phi 1-3/4$ , BOLT HOLES WILL BE  $1/8"$  LARGER THAN DIAMETER OF BOLT. FOR BOLTS  $\phi 1-3/4$  OR LARGER, BOLT HOLES WILL BE  $1/4"$  LARGER THAN DIAMETER OF BOLT.
- DIMENSIONS AND DRILLING OF END FLANGE CONFORM TO THE AMERICAN CAST IRON FLANGE STANDARDS, CLASS 125 (B16.1).
- DIMENSIONS AND DRILLING OF MECHANICAL JOINT END CONFORM TO ANSI/ AWWA C111/ A21.11.
- VALVES MANUFACTURED & TESTED IN ACCORDANCE WITH AWWA SPECIFICATION C-504 LATEST REVISION, CLASS 150B.
- RECOMMENDATION FOR MATING FLANGES: WHERE INSULATING BUSHINGS ARE USED, IT IS NECESSARY THAT BOLT HOLES BE DRILLED OVERSIZE BY AN AMOUNT EQUAL TO TWO TIMES THE INSULATING SLEEVE THICKNESS TO MAINTAIN THE SAME MINIMUM CLEARANCE FOR BOLTS.

REV	DATE	DESCRIPTION	DWN	APP
2	4/30/23	UPDATED TITLE BLOCK	RTF	RF
1	1/23/19	UPDATED NOTES	PB	SS

**PRATT**  
a MUELLER brand

GENERAL ARRANGEMENT DRAWING  
 24"-36" GROUNDHOG VALVE  
 FLANGE X MECHANICAL JOINT END  
 MDT BURIED SERVICE NUT

SCALE NONE DATE 5/18/05

DRAWN BY ES CHECKED BY JR

APPROVED GA=BORDER

DRWG. NO. GA-11426 REV 2 A/C