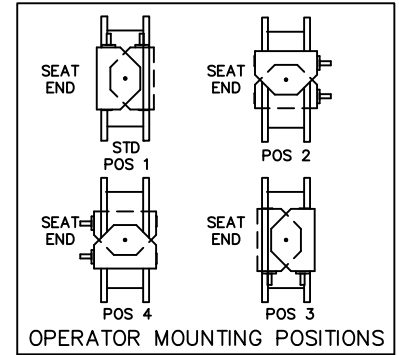
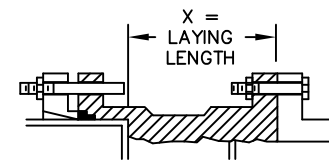
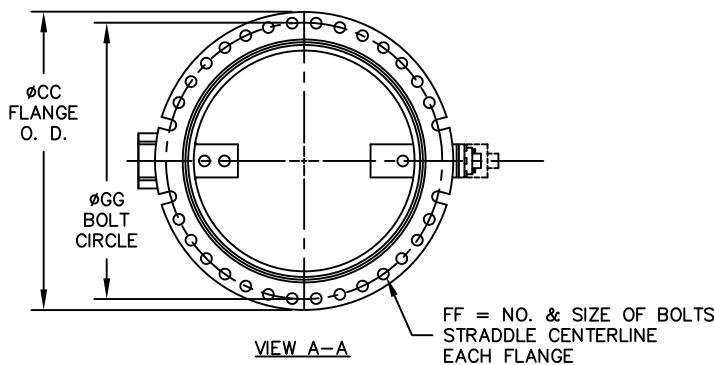
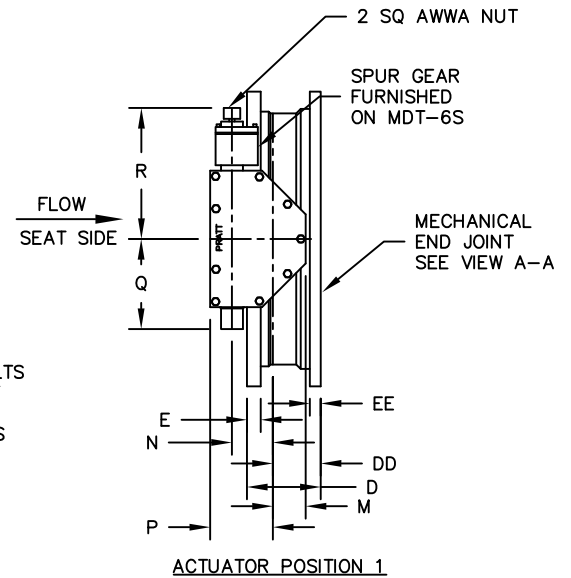
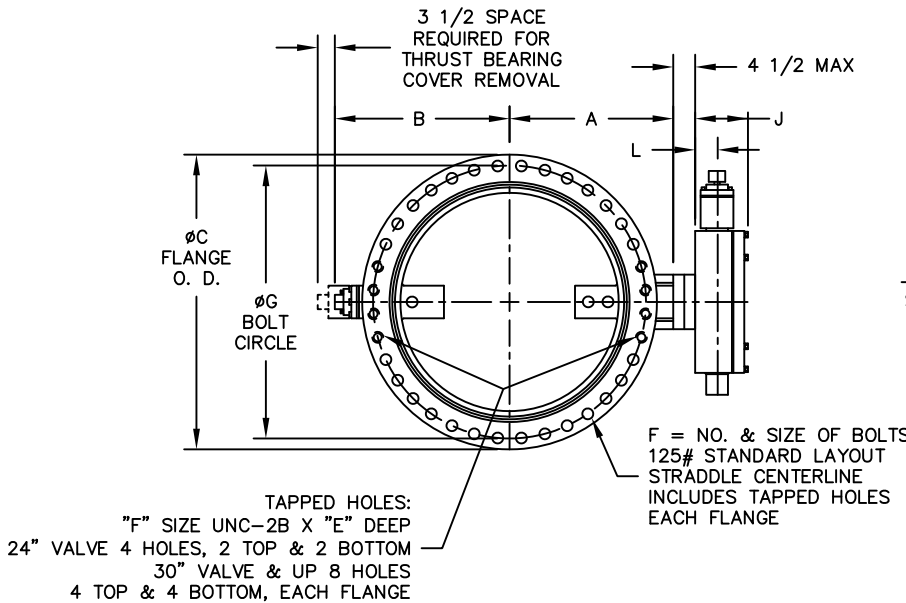


VALVE SIZE	A	B	C	CC	D	DD	E	EE	F	FF	G	GG	X
24	18-5/8	18-5/8	32	31-9/16	10-5/8	6-5/8	1-7/8	1-5/8	20/1-1/4	16/3/4	29-1/2	30	7-1/8
30	21-1/2	24-3/8	38-3/4	39	15	9	2-1/8	1-13/16	28/1-1/4	20/1	36	36-7/8	11
36	25-7/16	28-1/4	46	45-7/8	17	11	2-3/8	2	32/1-1/2	24/1	42-3/4	43-3/4	13

ACTUATOR SIZE	J	L	M	N	P	Q	R	NUMBER OF TURNS
MDT-4S	6-3/8	2-27/32	3-3/8	4	7-5/16	6-3/4	11-5/16	40
MDT-5	7-9/16	3-15/32	4-1/2	5-1/2	8-3/4	10	17	44
MDT-5S	8-5/16	3-15/16	5-1/2	7	10-1/2	15-15/16	19-7/8	136
MDT-6S	10-3/16	5-1/16	7	8-1/4	12-5/8	14-3/16	26-1/2	215



A. CHECK WITH FACTORY WHEN SELECTING ALTERNATE MIRROR ACTUATOR STYLES.



INSTALLATION DIAGRAM
BOLTS, NUTS, GLANDS
AND GASKETS FURNISHED
BY OTHERS

NOTES:

- ALL DIMENSIONS SHOWN IN INCHES.
- "D" DIMENSION $\pm 1/8"$.
- FOR BOLTS SMALLER THAN $\phi 1-3/4$, BOLT HOLES WILL BE $1/8"$ LARGER THAN DIAMETER OF BOLT. FOR BOLTS $\phi 1-3/4$ OR LARGER, BOLT HOLES WILL BE $1/4"$ LARGER THAN DIAMETER OF BOLT.
- DIMENSIONS AND DRILLING OF END FLANGE CONFORM TO THE AMERICAN CAST IRON FLANGE STANDARDS, CLASS 125 (B16.1).
- DIMENSIONS AND DRILLING OF MECHANICAL JOINT END CONFORM TO ANSI/ AWWA C111/ A21.11.
- VALVES MANUFACTURED & TESTED IN ACCORDANCE WITH AWWA SPECIFICATION C-504 LATEST REVISION, CLASS 150B.
- RECOMMENDATION FOR MATING FLANGES: WHERE INSULATING BUSHINGS ARE USED, IT IS NECESSARY THAT BOLT HOLES BE DRILLED OVERSIZE BY AN AMOUNT EQUAL TO TWO TIMES THE INSULATING SLEEVE THICKNESS TO MAINTAIN THE SAME MINIMUM CLEARANCE FOR BOLTS.

REV	DATE	DESCRIPTION	DWN	APP
2	4/30/23	UPDATED TITLE BLOCK	RTF	RF
1	1/23/19	UPDATED NOTES	PB	SS

PRATT
a MUELLER brand

GENERAL ARRANGEMENT DRAWING
24"-36" GROUNDHOG VALVE
FLANGE X MECHANICAL JOINT END
MDT BURIED SERVICE NUT

SCALE	NONE	DATE	5/18/05
DRAWN BY	ES	CHECKED BY	JR
APPROVED	GA=BORDER		
DRWG. NO.	GA-11426	REV	2