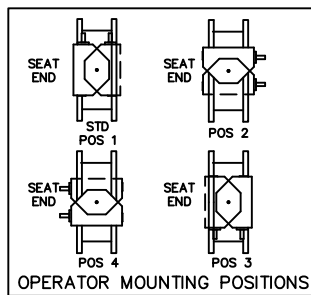
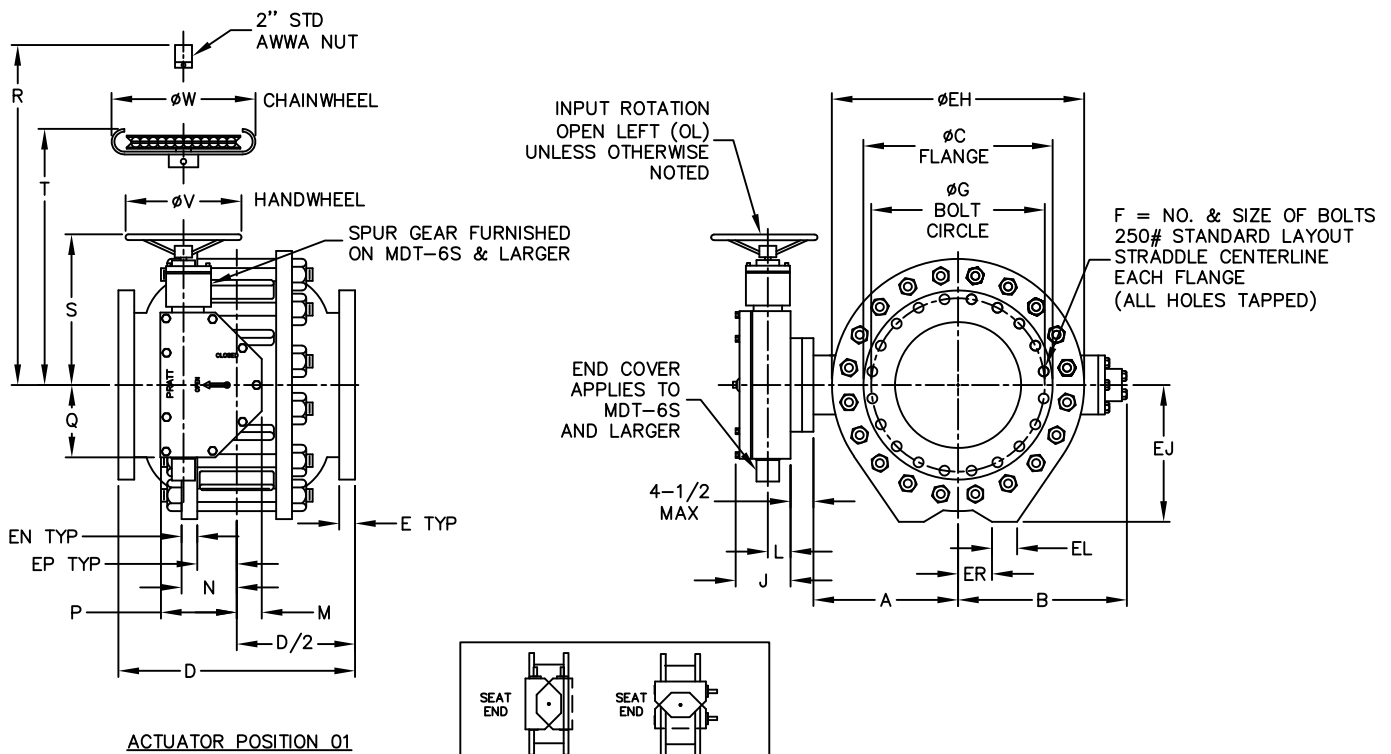


VALVE SIZE	A	B	C	D	E	F	G	EH	EJ	EL	EN	EP	ER
4	9-7/8	12-1/4	10	13	1-1/4	8 x 3/4	7-7/8	14-1/4	8-1/8	2-5/16	7/8	2	2-15/16
6	10-1/2	13-1/4	12-1/2	16	1-7/16	12 x 3/4	10-5/8	16-1/2	9	2-5/16	1-1/8	2-3/8	2-15/16
8	11-1/8	13-15/16	15	18	1-5/8	12 x 7/8	13	19	10-1/8	2-3/4	1-1/2	2-3/4	3-13/16
10	12-7/8	16-1/8	17-1/2	20-1/8	1-7/8	16 x 1	15-1/4	22	11-7/8	3-3/8	1-11/16	3-1/8	4-1/8
12	15	18-1/2	20-1/2	24	2	16 x 1-1/8	17-3/4	25-5/8	13-1/2	4-1/16	1-7/8	3-3/16	3-7/8
14	17-3/8	20-5/8	23	27-3/4	2-1/8	20 x 1-1/8	20-1/4	29-3/4	15-1/2	4-1/2	2-1/16	3-1/4	4-1/2
16	20-1/16	23-1/4	25-1/2	28-1/8	2-1/4	20 x 1-1/4	22-1/2	33	17-1/8	4-3/4	2-1/4	3-1/4	5
18	21-9/16	24-7/8	28	31	2-3/8	24 x 1-1/4	24-3/4	36-5/8	18-3/4	4-7/8	2-3/4	3-13/16	5-9/16
20	23-5/8	27-3/4	30-1/2	34	2-1/2	24 x 1-1/4	27	39-7/8	20-1/2	4-5/8	2-3/8	5-1/4	6-1/4
24	28	31-1/8	36	42-3/4	2-3/4	24 x 1-1/2	32	46	23-7/8	5	2-3/4	5-15/16	7-3/4
30	34-5/8	38-5/16	43	50-1/4	3	28 x 1-3/4	39-1/4	57-1/4	29-1/2	5-15/16	3-5/16	6-11/16	10-7/16
36	40-3/4	44-5/8	50	54	3-3/8	32 x 2	46	67-1/4	34-1/2	6-7/16	3-7/8	7-5/8	8-3/4

ACTUATOR SIZE	J	L	M	N	P	Q	R	S	T	V	W	NUMBER OF TURNS
MDT-3S	5-5/8	2-7/16	3-1/4	3-5/32	5-5/8	5-3/8	10-3/8	10-1/2	10-1/8	12	9-1/8	30
MDT-4S	6-3/8	2-27/32	3-3/8	4	7-5/16	6-3/4	11-5/16	11-1/2	11	12	9-1/8	40
MDT-5	7-9/16	3-15/32	4-1/2	5-1/2	8-3/4	10	17	17 3/16	17-3/16	18	16-7/16	44
MDT-5S	8-5/16	3-15/16	5-1/2	7	10-1/2	15-15/16	19-7/8	20	19-13/16	24	22-1/4	136
MDT-6S	9-7/8	5-1/16	7	8-1/4	12-5/8	14-3/16	26-1/2	27-3/4	27-1/2	24	22-1/4	215
MDT-10	12-3/16	5-7/8	11-15/16	11-5/8	19-1/16	19-29/32	28-1/4	33-1/4	33-1/4	24	26	526
MDT-15	16-3/16	7-7/8	16-1/4	17-1/2	27-1/8	27-1/8	35-1/2	40-1/2	40-1/2	30	32	1200



- A. IGNORE SEAT SIDE DESIGNATION FOR RSBV, BECAUSE SEAT ON BOTH SIDES.
- B. CHECK WITH FACTORY WHEN SELECTING ALTERNATE MIRROR ACTUATOR STYLES.

NOTES:

1. ALL DIMENSIONS SHOWN IN INCHES.
2. "D" DIMENSION  $\pm 1/8$ ".
3. FOR BOLTS SMALLER THAN  $\phi 1-3/4$ , BOLT HOLES WILL BE  $1/8$ " LARGER THAN DIAMETER OF BOLT. FOR BOLTS  $\phi 1-3/4$  OR LARGER, BOLT HOLES WILL BE  $1/4$ " LARGER THAN DIAMETER OF BOLT.
4. DIMENSIONS AND DRILLING OF END FLANGES CONFORM TO THE AMERICAN CAST IRON FLANGE STANDARDS, CLASS 250(B16.1).
5. VALVES MANUFACTURED & TESTED IN ACCORDANCE WITH AWWA SPECIFICATION C-507 LATEST REVISION, CLASS 300.
6. RECOMMENDATION FOR MATING FLANGES: WHERE INSULATING BUSHINGS ARE USED, IT IS NECESSARY THAT BOLT HOLES BE DRILLED OVERSIZE BY AN AMOUNT EQUAL TO TWO TIMES THE INSULATING SLEEVE THICKNESS TO MAINTAIN THE SAME MINIMUM CLEARANCE FOR BOLTS.
7. VALVE ROTOR SHOWN IN OPEN POSITION.
8. CAUTION: IT IS RECOMMENDED THAT VALVES BE INSTALLED INTO THE PIPING SYSTEM IN ACCORDANCE WITH AWWA M-11 IN ORDER TO PREVENT ANY UNDUE PIPING STRESS, DEFLECTION OR BENDING THAT MAY EFFECT THE PERFORMANCE OF THE VALVE.

REV	DATE	DESCRIPTION	DWN	APP
4	5/6/23	ADDED POSITION CHART	RTF	RF
3	7/13/17	REMOVED NOTE	LF	SS
2	10/12/16	REVISED TITLE REMOVED SEAT OPTION	JWD	JUR
1	7/12/13	REVISED DIM. TABLE	JUR	RCB

**PRATT**

4"-36" 300# DOUBLE SEAT  
E-LOK BALL VALVE W/  
MDT MANUAL ACTUATOR

SCALE NONE DATE 6-16-05

DRAWN BY LK CHECKED BY ES

APPROVED \_\_\_\_\_ GA=BORDER

DRWG. NO. GA-11440 REV 4 A/C