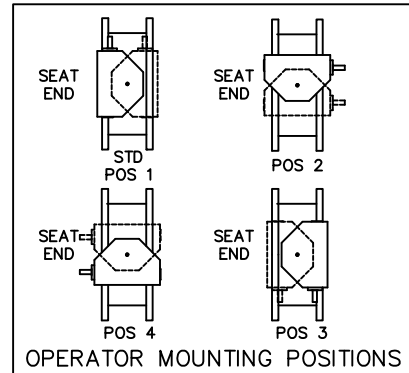
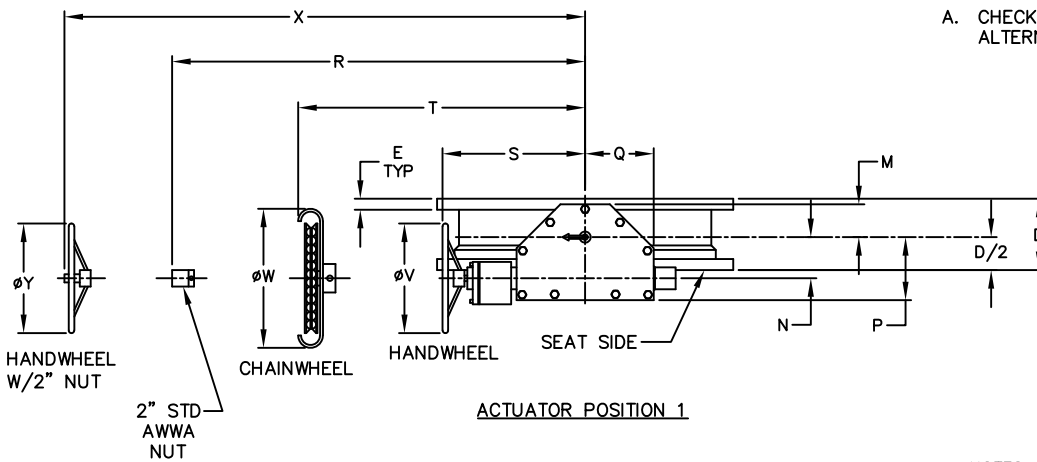


ACTUATOR SIZE	J	L	M	N	P	Q	R	S	T	V	W	X	Y	NUMBER OF TURNS
MDT-5	7-9/16	3-15/32	4-1/2	5-1/2	8-3/4	10	17	17 3/16	17-3/16	18	16-7/16	17-9/16	18	44
MDT-5S	8-5/16	3-15/16	5-1/2	3-5/8	10-1/2	15-15/16	19-7/8	20	19-13/16	24	22-1/4	20-3/8	24	136
MDT-6S	10-3/16	5-1/16	7	8-1/4	12-5/8	14-3/16	26-1/2	27-3/4	27-1/2	24	22-1/4	28-1/8	24	215

VALVE SIZE	A	B	C	D	E	F	G
24	18-5/8	18-3/8	32	8	1-7/8	20/1-1/4	29-1/2
30	21-1/2	24-1/8	38-3/4	12	2-1/8	28/1-1/4	36
36	25-7/16	28-1/4	46	12	2-7/16	32/1-1/2	42-3/4
42	29-7/8	32-11/16	53	12	2-5/8	36/1-1/2	49-1/2
48	34-1/16	36-7/8	59-1/2	15	2-3/4	44/1-1/2	56
54	37-1/2	40-9/16	66-1/4	15	3	44/1-3/4	62-3/4
60	41-3/4	44-13/16	73	15	3-1/8	52/1-3/4	69-1/4
66	46-1/16	49-1/8	80	18	3-7/16	52/1-3/4	76
72	50	53-1/16	86-1/2	18	3-1/2	60/1-3/4	82-1/2



A. CHECK WITH FACTORY WHEN SELECTING ALTERNATE MIRROR ACTUATOR STYLES.

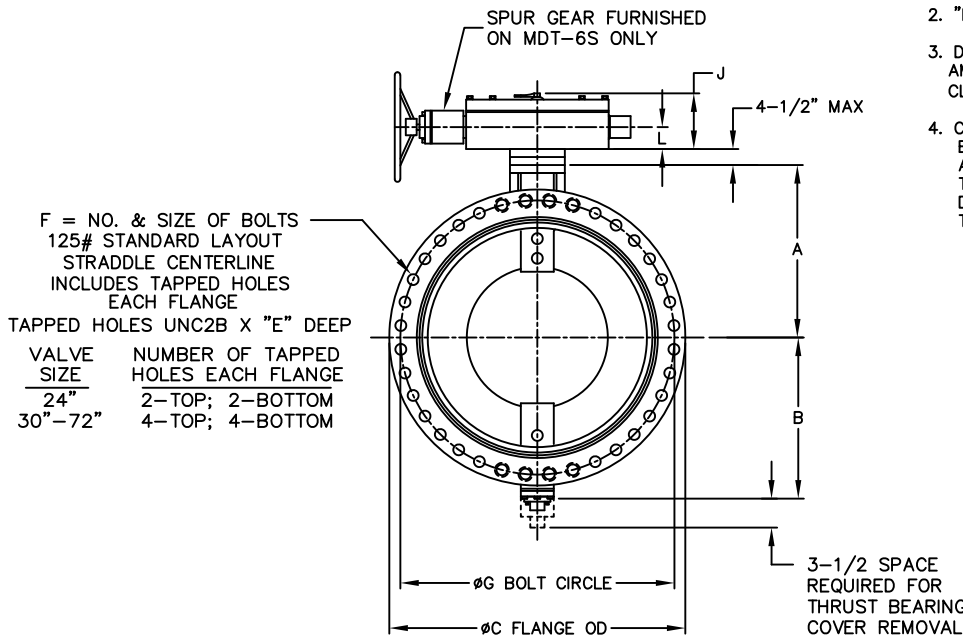


TOLERANCES	
FLANGE THICKNESS "E":	+1/4"
	-0
LAYING LENGTH "D":	
24" THRU 72"	+1/8"
BOLT CIRCLE "G":	+1/16"
FLANGE O.D. "C":	
24" THRU 48"	+3/16"
54" THRU 72"	+1/4"

ACTUATOR POSITION 1

NOTES:

1. ALL DIMENSIONS SHOWN IN INCHES.
2. "D" DIMENSION ±1/8".
3. DRILLING OF END FLANGES CONFORM TO THE AMERICAN CAST IRON FLANGE STANDARDS, CLASS 125 (B16.1).
4. CAUTION: IT IS RECOMMENDED THAT VALVES BE INSTALLED INTO THE PIPING SYSTEM IN ACCORDANCE WITH AWWA M-11 IN ORDER TO PREVENT ANY UNDUE PIPING STRESS, DEFLECTION OR BENDING THAT MAY EFFECT THE PERFORMANCE OF THE VALVE.



F = NO. & SIZE OF BOLTS
125# STANDARD LAYOUT
STRADDLE CENTERLINE
INCLUDES TAPPED HOLES
EACH FLANGE
TAPPED HOLES UNC2B X "E" DEEP

VALVE SIZE	NUMBER OF TAPPED HOLES EACH FLANGE
24"	2-TOP; 2-BOTTOM
30"-72"	4-TOP; 4-BOTTOM

REV	DATE	DESCRIPTION	DWN	APP
10	5/2/23	ADDED POSITION CHART	RTF	RF
9	12/12/16	T WAS R, R WAS T REMOVED MDT-4S REVISED MDT-5S "N"	JMD	RF
8	5/20/14	ADD DATA FOR HW W/2" NUT	DMB	RF
7	6/11/13	UPDATED TITLE BLOCK	JTC	ROB
6	8/29/11	UPDATED TITLE BLOCK	CEM	MLB

PRATT
a Mueller brand

24"-72" HP250II FLG BFV
B16.1 CLASS 125 DRILLING
MDT MANUAL

SCALE NONE DATE 9/9/05
DRAWN BY ES CHECKED BY JMR
APPROVED GA=BORDER
DRWG. NO. GA-11477 REV 10 A/C