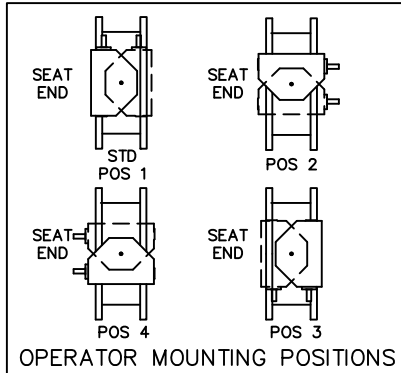


ACTUATOR SIZE	VALVE SIZE	J	L	M	N	P	Q	R	S	T	V	W	NUMBER OF TURNS
MDT-2S	3-8"	4-11/16	2	2-1/8	2	4-1/2	4-1/4	8-1/4	7-7/8	7-7/8	8	9-1/8	32
MDT-3S	10-14"	5-5/8	2-7/16	3-1/4	3-5/32	5-5/8	5-3/8	10-3/8	10-1/2	10-1/8	12	9-1/8	30
MDT-4S	16 & 18"	6-3/8	2-27/32	3-3/8	4	7-5/16	6-3/4	11-5/16	11-1/2	11	18	9-1/8	40
MDT-5	20"	7-9/16	3-15/32	4-1/2	5-1/2	8-3/4	10	17	17 3/16	17-3/16	18	16-7/16	44

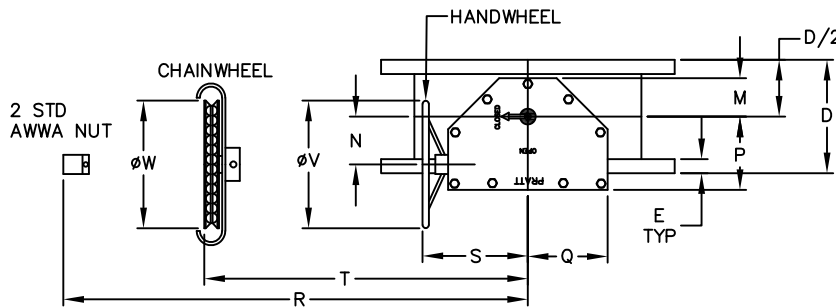


- A. IGNORE SEAT SIDE DESIGNATION ON BFV SIZE 3" -20"
- B. CHECK WITH FACTORY WHEN SELECTING ALTERNATE MIRROR ACTUATOR STYLES.

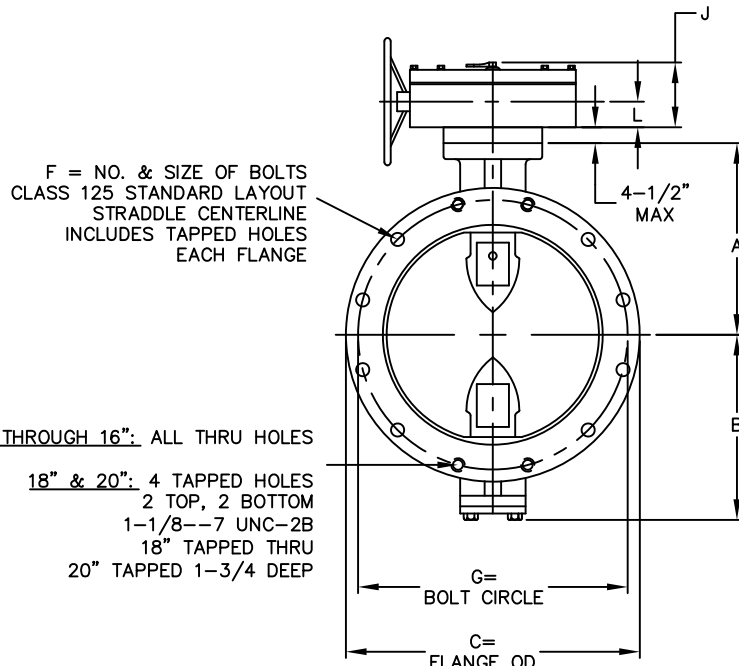
VALVE SIZE	A	B	C	D	E	F	G
3	4-3/4	3-1/4	7-1/2	5	13/16	4--5/8	6
4	5-1/2	3-1/2	9	5	1	8--5/8	7-1/2
6	6-1/2	5-1/8	11	5	1-1/16	8--3/4	9-1/2
8	7-3/4	6-1/2	13-1/2	6	1-3/16	8--3/4	11-3/4
10	9	9-11/16	16	8	1-3/16	12--7/8	14-1/4
12	10-1/2	11-3/16	19	8	1-5/16	12--7/8	17
14	11-7/8	12-5/8	21	8	1-3/8	12--1	18-3/4
16	13-1/2	14-3/8	23-1/2	8	1-7/16	16--1	21-1/4
18	14-3/8	15-1/4	25	8	1-9/16	16--1-1/8	22-3/4
20	16	16-7/8	27-1/2	8	1-11/16	20--1-1/8	25

NOTES:

- ALL DIMENSIONS SHOWN IN INCHES.
- "D" DIMENSION $\pm 1/16$ " FOR 3" THRU 10" VALVES.
"D" DIMENSION $\pm 1/8$ " FOR 12" THRU 20" VALVES.
- FLANGE THROUGH BOLT HOLES WILL BE $1/8$ " LARGER THAN DIAMETER OF BOLT.
- DIMENSIONS AND DRILLING OF END FLANGES CONFORM TO THE AMERICAN CAST IRON FLANGE STANDARDS, CLASS 125 (B16.1).
- VALVES MANUFACTURED & TESTED IN ACCORDANCE WITH AWWA SPECIFICATION C-504 LATEST REVISION, CLASS 250B.
- RECOMMENDATION FOR MATING FLANGES: WHERE INSULATING BUSHINGS ARE USED, IT IS NECESSARY THAT BOLT HOLES BE DRILLED OVERSIZE BY AN AMOUNT EQUAL TO TWO TIMES THE INSULATING SLEEVE THICKNESS TO MAINTAIN THE SAME MINIMUM CLEARANCE FOR BOLTS.



ACTUATOR POSITION 1



3 THROUGH 16": ALL THRU HOLES

18" & 20": 4 TAPPED HOLES
2 TOP, 2 BOTTOM
1-1/8"-7 UNC-2B
18" TAPPED THRU
20" TAPPED 1-3/4 DEEP

TOLERANCES	
FLANGE THICKNESS "E":	$+1/8$ -0
LAYING LENGTH "D":	
3" THRU 10"	$\pm 1/16$ "
12" THRU 20"	$\pm 1/8$ "
BOLT CIRCLE "G":	$\pm 1/64$ "
FLANGE O.D."C":	
3" THRU 10"	$\pm 1/8$ "
12" THRU 20"	$\pm 3/16$ "

REV	DATE	DESCRIPTION	DWN	APP
6	5/8/23	ADDED POSITION CHART	RTF	RF
5	6/28/18	UPDATED "V" DIM.	LF	JUR
4	12/15/06	UPDATED TITLE BLOCK	JWD	RF
3	4/04/11	REVISE COLUMN "E" TOL.	JLM	RCB
2	10/06/09	REVISE COLUMN "B"	SK	RCB
1	9/02/09	CORRECT & UPDATE	CEM	JR

PRATT

3"-20" BONDED SEAT HP250II
ANSI 125# FLG
MDT MANUAL

SCALE NONE DATE 9/9/05
DRAWN BY ES CHECKED BY JR
APPROVED GA=BORDER
DRWG. NO. GA-11478 REV 6 A/C